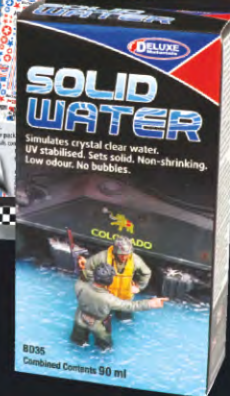




🇬🇧 Made in the UK

Creators of model hobby products for 50 years



deluxematerials.com





CONTENTS

Products

- Adhesives**
- 3 Rokat cyano (ca) range
- 4 Adhesive accessories: Useful products for use with the Rokat cyano range
- 5 Speed Epoxy range Aero Tsch range
- 6 Adhesives for plastics
- 8 Adhesives
- 10 Building products & Scenics
- 12 Accessories Useful modelling products
- 14 Finishing products
- 17 Lubricants
- Showing you how to use...*
- 18 Perfect Plastic Putty / Scenic Rust
- 19 Eze Tissue
- 20 Solid Water / Rokat UV
- 21 PowerModel Jet Oil
- 22 Laser-Cut Kit Glue
Create and Shape / Foam Armour / Making Waves Coastal water creation
- 23 Glue'n'Glaze / Plastic Magic / Liquid Gravity / Rokat Hot
Fixing a jump jet
- 24 Foam2Foam / Super'Phatic!
- 25 Aqua Magic / Looks Like Glass
- 26 Eze Dope + other products to build Vintage Model Company Sparrowhawk
- 27 Applications - aircrafts
- 28 Applications - railways / miniatures
- 29 Applications - boats / Showing you how to use... Eze Kote
- 30 Technique and technology library
- 32 Glue chart

Deluxe Materials - Creating innovative and safer model hobby products for 50 years and enhancing modellers' enjoyment of their hobbies.

Greetings to all model hobbyists. We, at Deluxe Materials continue to use our modelling and chemical expertise to create innovative, safer and often unique products that modellers want.

Along with our many established brands, you will discover in the following pages, many new products, new and exciting packaging and a host of product guides and articles.

You can access our library of articles and videos throughout the product pages. Also on pages 30 & 31 there are PDFs showing techniques and the technology, simply by scanning with your phone the QR codes, in this, our best catalogue yet, built to celebrate our 50 years of trading.



[LEARN MORE](#)

Video



John and Vivienne Bristow

Acknowledgements

We thank the many skilled modellers who have helped us create this catalogue by contributing articles on techniques, photographs and videos that you will find on our YouTube Channel.

R/C Modelling

Andy Sephton
Chris Jackson
Roy Thompson
Bob Petrie
Gary Richie
Bob Benjamin
Stuart Marsden

Railway

Peter Marriott
George Dent
Len Weal
Paul Whyte
Paul Rice
L Cut Creative

Plastics

José Brito
Jezz Colman
Nicholas Smith
Andy Argent
Frederik Astier

Miniatures

Jenny Kelm
Catherine Davies

Front cover image courtesy of José Brito.



GAUGEMASTER Supplying The World's Model & Hobby Products



Deluxe Materials products are available from all **GAUGEMASTER** stockists, or, in case of difficulty, direct from ourselves at www.gaugemaster.com

Roket cyano range

Roket range of fast setting adhesives including cyanoacrylate (ca)(superglue) and UV activated.

Designed for use with precise Roket Glue Tips (AC20) and Micro Tip anti-clog applicator (AC9).

Product guide	Set Time/seconds	Penetrating for tight joints	Gap filling	Non drip	Non fogging on clear plastic	Bonds wood, metal rigid plastics (styrene PVC etc.)	Foam safe bond on:			Bonds shiny plastic with Tricky Stick	Bonds pre-painted parts
							EPS	EPO	EPP		
Roket Hot, Roket Rapid	1-5 5-10	Hot	No	No	No	Yes	No	Yes	Yes	Yes	Yes
Roket Max, Roket ca Gel	10-20 10	No	Yes	Yes	No	Yes	No	Yes	Yes	Yes	Yes
Roket Odourless	10-20	No	No	No	Yes	Yes	Yes	Yes	Yes	Yes	Yes

Roket Hot

(AD43) 20g

Super-thin, fast, penetrating adhesive; sets 1-5 seconds. Position parts closely together & apply one drop. **Bonds:** wood, metal, rigid plastics (styrene, PVC etc.) **Foam safe bond on EPO, EPP.**

Roket Hot is the perfect glue for penetrating tightly fitting joints. Store in a cool, dry, dark place.

5 secs
Close fit joint
Bring surfaces together & apply

Roket Rapid

(AD44) 20g

Medium viscosity, fast setting adhesive; sets 5-10s. Apply to one surface & apply pressure holding parts together until joined. **Bonds:** wood, metal, rigid plastics (styrene, PVC etc.)

Foam safe bond on EPO, EPP. Store in a cool, dry, dark place. A drop of Roket Rapid applied to the joint did the job in five seconds.

10 secs
Apply to one surface & bring together

Roket Max

(AD45) 20g

Thick, maximum gap-filling adhesive; sets 10-20 seconds. Apply to one surface. Hold parts together until joined. **Bonds:** wood, metal, rigid plastics (styrene, PVC etc.) **Foam safe bond on EPO, EPP.**

Use to make strengthening fillets. For large areas apply small beads of glue at intervals & apply pressure to joint.

20 secs
Apply on vertical surface & gap filling if needed

Roket Odourless

(AD46) 20g (AD85) 3g

Foam-safe, non-fogging, crystal clear, odourless grade. For bonding crystal clear plastics & foam; sets 10-20 seconds. **Bonds:** wood, metal, rigid plastics (styrene, PVC etc.). **Foam safe bond on EPS, EPO, EPP.**

Try this odourless grade if you experience an allergic reaction to standard grades of ca.

10 - 20 secs
Safe on foam apply to one surface foam or clear plastic

Roket UV

(AD88) 5g (AD89) 20g

A UV (Ultra Violet) light activated adhesive.

It is:

- crystal clear
- odourless in use
- non-blooming
- fast curing 1-3 seconds.

Roket UV bonds almost all materials including glass, plastics, metal, wood & leather. It is not recommended for surfaces subject to water immersion, shock or shiny plastics.

10 - 20 secs
Plastic parts
Window dolls house
Clear plastic

Roket Cyano Glue Gel

(AD69) 20ml (AD90) 3g

Fast 10 second bond. A high strength cyano glue that does not run & is ideal for gap filling. The metal tube extends shelf life. **Bonds:** wood, plastic, metal, card, rubber etc.

10 secs
Precision application on vertical surface

Available as 20g tube AD69 or 3g tube AD90.

10 secs
Precision application on vertical surface

Roket UV tube with UV light, AD88 5g tube with UV light, AD89 20g top up (adhesive only).

[LEARN MORE](#)



Roket cyano range for R/C



Roket cyano range for plastics

Tricky Stick

AC17 50 ml

Allows cyano to bond shiny plastics, rubber & foam including polypropylene, nylon, vinyl & silicone rubber. Increases the versatility of cyano as a glue & improves adhesive strength.

LEARN MORE



Simply brush Tricky Stick onto surfaces. Wait for it to dry & apply cyano. Bring surfaces together until joined.

Tricky Stick surface primer enables Rokat ca glue to spread & bond shiny surfaces



Rokat Blaster

AD17 50 ml spray bottle **AD59** 250 ml top up bottle

Cyano accelerator spray which permits Rokat ca (AD43-46) to bond difficult surfaces & accelerate the cure.

Pre-condition surfaces with Rokat Blaster. Once dry apply Rokat ca (AD43-46) for an instant bond to: Wood, metal, rigid plastics (styrene, PVC etc.)

FOAM SAFE

LEARN MORE



Forces cure through cyano glue to fill gaps & enable fillets.

Micro Tips & Tube

AC9

Pack of six Micro Tips & PTFE tubing for precise anti-clog application of Rokat ca glues (AD43-46).

Rokat Re-Cap

AC16

Replacement caps for Rokat superglue (ca) (AD43-46), Super'Phatic! & Rokat Card Glue. Rokat Re-Cap re caps, refreshes & restores your bottle.

Pack contains: Rokat ca spout & cap x 2, Super'Phatic! / Rokat Card Glue cap x 1, Spare Micro Tip x 1

Glue Buster

AD48 28 g

Debonder & dissolver of superglue (ca). Releases bonded skin & removes superglue stains. Stays on site for faster de-bonding action.

LEARN MORE



Rokat Powder

AD18 40 g

Strengthening powder for use with thin cyano adhesives to improve gap filling & toughness. Flows like liquid into spaces to take exact shape. Use for filling gaps where strength is needed. Sets in seconds with Rokat Hot (AD43) or Rapid (AD44) cyano; can be filed and drilled.

LEARN MORE



Rokat Glue Tips

AC20 Pack of 6

Suits: Rokat cyano, Rokat Card & Super'Phatic! glues

1. Fit tip
2. Stretch for finer application
3. Shorten as required

One piece glue tips for the accurate application of Deluxe Materials glues: Rokat cyano, Rokat Card Glue, Super'Phatic! & Ballast Bond.

- Instant fit.
- Anti clog.
- No mess.

Tips can be shortened or stretched for finer application.

Useful products for use with the **Rokat cyano range** and more



LEARN MORE



Rokat Glue Tips



Rokat Re-Cap

Speed Epoxy II range

A range of high strength, rapid setting, epoxy glues that are formulated to set hard, clear & sandable & tolerate mixing ratio errors. Packed in protective boxes. Each bottle has a 'witches hat' design free flowing nozzle with coloured pop-on over-cap.



AD65 4 min 224 g

HIGH STRENGTH
 RAPID SETTING
 SETS CLEAR
 SANDABLE
 SETS HARD
 MIX RATIO II

AD66 4 min 71g

HIGH STRENGTH
 RAPID SETTING
 SETS CLEAR
 SANDABLE
 SETS HARD
 MIX RATIO II

AD67 4 min 28 g twin tube

HIGH STRENGTH
 RAPID SETTING
 SETS CLEAR
 SANDABLE
 SETS HARD
 MIX RATIO II

Speed Epoxy II

AD68 20 min 224 g

20 minute. Increased working time & strength.

INCREASED STRENGTH
 EXTENDED WORKING TIME
 SETS CLEAR
 SANDABLE
 SETS HARD
 MIX RATIO II

For tail fin & tail plane alignment.

Speed Epoxy II

AD71 60 min 224 g

60 minute. 3.5 ton maximum strength.

MAXIMUM STRENGTH
 EXTENDED WORKING TIME
 MIX RATIO II
 SETS CLEAR
 SANDABLE
 SETS HARD

Ideal for: Wing joining.

Speed Epoxy II

AD73 4 min 28 g syringe

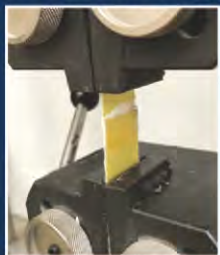
4 minute.

- Fast setting.
- Sets Hard.
- Non brittle.

LEARN MORE

AERO T<CH range

Specially formulated epoxy for bonding composite mouldings.



AERO T<CH & hardwood



AERO T<CH & epoxy glass



Tensile tests prove AERO T<CH is stronger than the hardwood & epoxy glass it bonds.

AERO T<CH Auto Mix Nozzles

AC 14

Specially designed mixing nozzles for AERO T<CH cartridge. Pack of 5 mixing nozzles for use with AERO T<CH epoxy cartridge ensuring thorough mixing & maximum strength.

Epoxy Syringe

AD63 25 ml twin syringe



Available as 50 ml cartridge AD64 for use in AERO T<CH dispenser AC15 or a 25ml syringe AD63.

Epoxy Cartridge

AD64 50 ml



Non-drip high strength epoxy for bonding composite mouldings. Ideal for formers, engine & undercarriage mounts, servo mounts & bulkheads. Gels in 3-4 hours, full cure in 24 hours. Mixed adhesive may be stored in a freezer for 1-2 hours & re-used. AERO T<CH epoxy bonds: epoxy GRP, carbon fibre, aluminium alloy, ply & hardwood etc.



AERO T<CH Epoxy Dispenser

AC15 accepts 50 ml cartridge, AD64

LEARN MORE



Aero T<ch AD63 and AD64

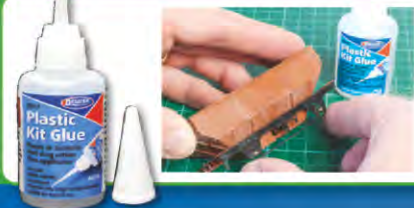


SAFER TO USE INDOORS

Safer formula. Can be applied with Deluxe Materials Pin Flow solvent glue applicator (AC11) or conventionally with either of the two fine point or long reach brushes. **Plastic Magic** bonds nearly all commonly used modelling plastics including polyester, acrylic, styrene, ABS, PVC, butyrate, & polycarbonate delivering invisible glue lines.

Plastic Magic 1 second cement

1 second bond **AD77** 40 ml



A very fast, plastic cement for all types of plastic kits.

The clog-resistant formula & fine tip bottle make for great ease of use.

Bonds: styrene, clear plastic & even wood to plastic.

Plastic Kit Glue

AD70 20 ml



Low odour liquid plastic cement with long 25mm applicator.

The applicator enables the controlled, precise application of adhesive with low tendency to clog. Tough bonds in 10 seconds. Low odour for indoor working. Non-flammable.

(Not suitable for polystyrene foam).



Precision Plastic Glue

AD92 25 g

The applicator is stored within the cavity beneath the label for safety and easy posting.



SAFER TO USE INDOORS

A thin liquid plastic cement with an extended 10-15 second bond time.

It is applied to one or both surfaces & allows time for adjustment to a perfect position. **Non-toxic, non-flammable with minimal odour & almost zero evaporative loss.**

Bonds: styrene, plastic card, ABS & most kit plastics. It is supplied in a stable bottle with a choice of 2 brushes that deliver:

- high precision & long reach
- the tiniest drop
- access to the last drop in the bottle.

Plastic Magic 10 Sec Cement will not harden applicator brushes & tips require no cleaning.

Plastic Magic 10 second cement

10-15 second adjustment time **AD83** 40 ml



Liquid plastic cement.

Non-toxic, non-flammable, minimal odour & fine non-clog tip that gives invisible glue lines. Can also be applied with brush, or **Micro Tips & Tube** (AC9). Bonds in 8-10 seconds & builds strength. *Bonds: styrene, polyester, butyrate & plastic card.* Water washable.

Roket Plastic Glue

AD62 30 ml

PLASTIC GLUE SELECTOR

Brand of glue	Adhesive Performance							Bonds ABS, Styrene, Plastic card, Butyrate
	Set Time / Secs	Invisible glue line	Adjustable joint as it sets	Sets clear	Gap filling ability	For clear glazing	Water clean up	
Plastic Magic 10 sec AD83	10-15	Yes	Yes	Yes	No	Yes	N/A	Yes
Plastic Magic AD77	1-5	Yes	No	Yes	No	Yes	N/A	Yes
Roket Plastic Glue AD62	10	Yes	Yes	Yes	No	Yes	Yes	Yes
Plastic Kit Glue AD70	5-10	No	Yes	Yes	Yes	No	N/A	Yes
Roket Hot AD43, Roket Max AD45	1-20	No	No	Yes	Yes (Max)	No	N/A	Yes
Roket Odourless AD46	10-20	Yes	No	Yes	Yes	Yes	N/A	Yes
Glue 'n' Glaze AD55	60 mins	Yes	Yes	Yes	Yes	Best	Yes	Yes
Precision Plastic Glue AD92	10	No	Yes	Yes	Yes	No	No	Yes



Mix ratio by volume

Most granular ballast to Ballast Magic powder	7 to 1
Nut based ballast to Ballast Magic powder	4 to 1

Ballast Magic

AD74 125 ml

Fine powder adhesive

For bonding scatter and ballast. Mix powder with ballast, position then spray with water to set.

- Ideal for large areas.
- For fine point work.
- Fixing coal, debris etc.

Tip, nut-based ballast:

Add 20% IPA or rubbing alcohol to water spray mix to improve performance or especially for bonding nut-based ballast.

Ballast Magic 125ml covers up to 20 metres of 00 gauge track



LEARN MORE



Glue 'n' Glaze

AD55 50 ml

LEARN MORE



For glazing & bonding crystal clear windows & canopies. A liquid plastic film-forming polymer which bonds most plastics & dries to a crystal clear film. It is ideal for miniature windows (00 gauge) or up to 6mm across. It will not smear or fog clear plastics. Ideal for scale aircraft, plastic canopies & glazing dolls house windows. Easy water clean up.



LEARN MORE



Ballast Magic Kit

AD76

Kit contains Ballast Magic (AD74) 125 ml, plus the accessories you need: a gentle action spray bottle, mixing cup and spatula.

Backscene Adhesive

AD 61 225 ml



Backscenes: Peco, Faller, Gaugemaster, Vollmer, Walthers

Backscene Adhesive is for bonding model rail/diorama backscene papers to hardwood, hardboard, painted surfaces, plaster, plastic coated & plaster board. It allows easy positioning & adjustment. 225 ml coverage approx 6 sq m² (65 ft²).

LEARN MORE



Backscene Adhesive

Scatter Grip



Super thin, ready mixed adhesive for bonding scenic granular materials e.g. model railroad ballast, coal etc. Capillary action ensures rapid, efficient spreading with fast drying & minimal disturbance to the ballast.

Ballast Bond

AD75 100 ml AD84 500 ml

- Instant wetting & spreading action.
- Does not disturb the ballast.
- Clear matt finish.
- Efficient for large areas, fixing coal etc, creating piles etc.
- Non greening & biocide protected.

Tip: May be blended 2 parts with 1 part isopropyl alcohol (by vol) for use with nut based ballast.



Rokat Glue Tips (AC20) perfect for fine application of Ballast Bond.

Instant wetting and spreading action

Coverage of the 100 ml Ballast Bond pack

Quality ballast grade(s)	100ml coverage
Fine	0.5 yd ² (0.4 m ²)
Coarse	0.3 yd ² (0.25 m ²)
Length of 00 gauge track	10 yds (9 metres)

Coverage of the 500 ml Ballast Bond pack

Coverage area	Approx. ft of HO track
2.5 sq yd	150



Scenic Spray Glue

AD54 150 ml

Spray glue for the attachment of scenic materials, e.g. scatter to trees or baseboards etc. Non-staining. Dries clear & tacky allowing working time for bonding scenic materials. Gentle spray action.



Scatter Grip

AD25 150 ml

Special adhesive which dries tacky allowing plenty of working time for bonding 'static grass' & scatter materials.

Ideal for railway layouts, scenery, dolls house gardens.

150 ml coverage, approx 1 sq m²



IMPROVED FORMULA



Foam2Foam

AD34 50 ml



FOAM SAFE

Clean neat and lightweight foam modelling

Foam 2 Foam adhesive is a foam safe, flexible, high tack, contact glue, that allows adjustment, dries clear and tack free. It can be spread, allowed to dry for 2 minutes and surfaces brought together for an instant bond.

The new formula has several benefits over other foam glues:

- It is completely clear, does not discolour.
- It is non-stringy in use.
- It dries fully without leaving surface stickiness.
- Bonds can be easily reversed or cleaned up using petroleum spirit.

Foam 2 Foam bonds Styrofoam, Tyvek, Depron, EPS, EPO foam, wood & plastics. Packed in a 50 ml aluminium tube for long life and easy application.



Speedbond

AD10 112 g AD11 500 g

AD91 25 ml

Special modelling PVA glue that contains no fillers. Has unique solvent chemistry for faster drying & is superior to many DIY PVA glues. *Bonds wood, foam, fabric, paper.*



Super'Phatic!

AD21 50 ml



Super-thin, non-fuming non-brittle alternative to cyano (ca). Allows you to:

- bond and reinforce preassembled joints
- apply glue in tiny amounts

- bond wood to plastic (unlike PVA) as well as foam, carbon fibre, and bond brass photo etch to plastic.



bonds hinges



LEARN MORE



Water clean-up, 10-20min set.

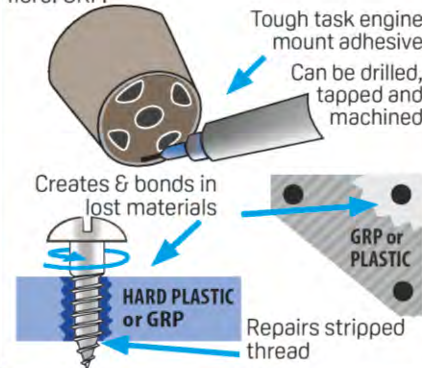


Strongest acrylic adhesive

Fusion

AD19 70 ml

parts such as motor mounts, lugs, bulkheads, metal fasteners onto polyester, epoxy or carbon fibre. GRP.



Super Crylic!

AD23 60 g twin pack

Tough, problem solving adhesive where epoxy and cyano do not work. For models where high impact plastics (eg. ABS) need to be bonded to wood, metal & GRP etc.

Ideal for:

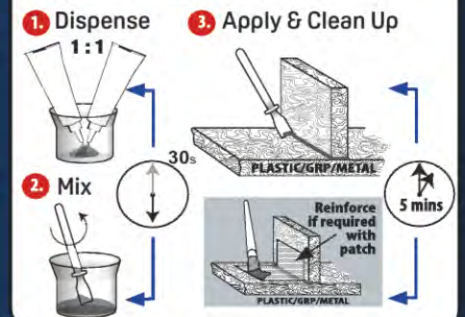
- wooden engine bearers
- plastic cowling repairs



Low viscosity allows use with light glass cloth.

Model boat:

- Fix propshafts & rudders inside boat hulls.
- Repairs to plastic hulls.



Aliphatic Resin

AD8 112 g AD9 500 g



Famous "yellow" wood glue used in aeromodelling & professional applications where hard woods are used; dries crisper than PVA giving better sanding especially with balsawood. Will not pull joints as it sets, resulting in better dimensional stability

important for airframe construction. Also sets at low temperatures & is water resistant making it ideal for model boats.

Use in miniature furniture making where its useful properties include:

- taking a stain
- faster grab time.



Tissue Paste

AD60 50 ml

Clear drying paste for bonding tissue paper used on traditional model aircrafts. The formulation allows **Eze Tissue** and other delicate tissue paper to be placed onto airframes & smoothed and bonded without tearing.



Cover Grip

AD22 150 ml

Heat sensitive adhesive for increasing the adhesion of plastic covering films (even aluminium foil) & trim to balsa & ply surfaces.

Ideal for vulnerable areas eg. engine bays.



LEARN MORE

Aliphatic



Cover Grip



Super Crylic!





R/C Modellers Canopy Glue

AD81 80 ml

Same glue - NEW better dispensing tube!

Multi-purpose gap-filling canopy glue. Thick & tacky, dries clear, remains flexible. Bonds combinations of wood, plastic, fabric, foil, painted surfaces.

LEARN MORE



Ideal for:

- aircraft canopies
- model boat plastic windows
- sealing gaps & small holes
- repairing tears in covering film
- application of rivets on scale models.



Roket Card Glue

AD57 50 ml

For fast assembly of card models e.g. railway buildings & rockets. Also bonds balsa wood, paper & card to most plastics. Use sparingly, align & press parts together for instant bond. Water clean up.

Build 7 kits with just one bottle.

LEARN MORE



Laser-Cut Kit Glue

AD87 25 g

For clean, neat, rapid construction of wooden laser-cut kits.

Deluxe Materials Laser-Cut Kit Glue is designed specifically for the rapid construction of wooden laser-cut kits.

Its low viscosity formula has several advantages:

- may be applied before or after assembly
- dries clear
- may be sanded when dry
- safe, odourless
- water clean-up
- penetrates, bonds, & reinforces joints.

Supplied with two needle applicators, cleaning pin and full instructions to keep adhesive flowing freely.



Decorator Glue

AD26 112 g

Thick glue, which, like Tacky Glue dries clear overnight. Instant hold round corners & on vertical surfaces whilst also allowing re-positioning. Bonds fabric, leather, silk, paper, wood, glass, plastic, metal, painted & varnished surfaces.

Dolls House Wallpaper Paste

AD32 250ml



Ready-mixed paste that dries clear. It is non-staining & does not attack copper wires or tape.



Dolls House Tacky Glue

AD86 80 ml

Very sticky glue which dries clear, flexible & is non-staining. Use for:

- bonding fabric
- plastic windows
- flower making
- bonding ceramic or flexible tiles.

Superior to other tacky glues in that it dries clear & bonds plastics, varnish & paint.



Body Armour

AD79 60 g

A highly flexible polymer adhesive specially designed for re-inforcing & repairing plastic model car bodies. Impact resistant & safe on paint. Bonds to most car body plastics, metal, including polycarbonate & styrene & will not attack common model car paints.

Body Armour can also be used to attach electronics, wires, LED light bulbs.



Clear, tough, resilient, gap-filling adhesive

Crystal clear, resilient, gap-filling adhesive. Ideal for bonding shiny plastics, foam, fabrics, metal & wood.

Fix'N'Flex

AD78 40ml tube

Uses:

- Plastic servo cases into foam.
- Bonding vinyl trim.
- Domestic repairs to shoes, boots and plastic coated fabrics.
- Tacking electric circuit boards.

Consumer benefits:

- Crystal clear bonds.
- Gap filling.
- Non-corrosive to electric circuitry.
- Withstands extreme low and high temperature (-20°C to 200°C).
- Bonding low energy plastics, silicone, polythene etc.
- Waterproof and gap-filling.



Tacky Wax

AD29 28g

Wax adhesive for holding miniatures in place whilst allowing re-positioning.

Many other uses eg. carrying small screws.



LEARN MORE

Tacky Wax



Body Armour



Laser Cut Kit Glue



Tacky Wax picture courtesy of Dan Evason and Modelu



Illustrated instructions for use supplied in each pack.

Eze Tissue Sheet size 75cm x 50cm

A specially developed lightweight tissue paper ideal for the covering of balsawood model aircraft.

Superior to many other tissues:

- Exceptionally low weight.
- High strength to weight ratio.
- High wet strength.
- Available in a wide range of colours & a unique designer tissue full of patterns & graphics for enhancing the appearance of tissue covered and other lightweight models.

The paper is designed to be bonded with Deluxe Materials Tissue Paste (AD60) and subsequently air-proofed with multiple coats of Deluxe Materials Eze Dope (BD42).



Eze Tissue

Sheets/
pack

	BD70 yellow	5
	BD71 red	5
	BD72 blue	5
	BD73 natural	5
	BD74 red chequer	3
	BD75 black chequer	3
	BD77 yellow & black chequer	3
	BD78 antique	5
	BD79 designer	2

Scenic Snowflakes

BD25 500 ml shaker pack

For the creation of dramatic snow scenes in minutes. Allows you to create easily real snow effects such as newly fallen, melted, slipped & frozen, on houses, trees & vegetation.



Scenic Snowflakes are different from other snow because they allow you to add the detailed snow effects that will distinguish your work from other common 'picture postcard' winter scenes. Coverage up to 1.5 m²

Scenic Snow Kit

BD29

For dramatic winter snow effects

Complete kit containing high brightness Snowflakes, Scenic Bond adhesive & Icy Sparkles. Snow covers 0.5 m². (Icy Sparkles available separately BD33).



Create and Shape

BD60 240ml

Creating stonework, rocks and paving



Creating mud effects

A lightweight, non-sagging scenic modelling material for the creation & casting of realistic diorama groundwork. Create and Shape can be moulded & smoothed with a soft wet brush before it is completely dry.

It dries without cracking to a tough material with great structural integrity, bonding wood, plaster, plastic, foam etc. It can be cut, sawn & filed to shape when dry without crumbling like other products & then glued & coloured with acrylic paints for beautiful scenic effects. Ideal for repairs & special scenic projects where strength & durability is required.

Eze Epoxy Putty

BD68 25 g

For rapid customising of plastic, resin, wood & metal models. This 2-part, fast-curing, epoxy putty will not shrink or crack. Sets in 10-15 minutes to a tough, lightweight plastic.



- Pre measured for accurate & easy mixing of the 2 parts.
- Easy to sand, carve & paint once set.
- Long life with re-sealable foil bag.
- Easily rolled to thin films.
- Holds its shape.



Creates a realistic texture & scale rust finish onto all types of paintable surfaces, wood, plastic, metal. It works within hours thereby creating greater realism for all types of modelling. Coverage is 0.3 m² (3,000 cm² or 450 in²)

Scenic Rust

BD27 100 g combined



LEARN MORE

Eze Epoxy Putty



Create and Shape



Scenic Rust





Tip: Mix 90 ml max at a time.

UV stabilised.

Low odour, non-shrinking 2 part resin for simulating bubble free crystal clear water for miniature bowls, garden ponds, canals, lakes & puddles. Creates the illusion of deep water even with minimal thickness. Use it for still water (canals or lakes) in railway layouts. Texture surface with **Making Waves** (BD39).



To find volume needed
Measure in cm width, height & depth
Multiply $w \times h \times d = \text{volume (cm}^3\text{)}$

Solid Water

BD35 90 ml **BD36** 350 ml

Coverage at approx 2 mm deep

Mixed quantity	m ²	(cm ²)	in ²
90 ml	0.045	(450)	70
350 ml	0.175	(1750)	271

Setting characteristics at 23 C (73 F)

Time / hours	Condition
0	Fluid
3.5	Not mobile (gelled)
5.5	Tack free surface
8.5	Hard
18	Fully cured



One part solution to the scale modelling of water effects such as rivers, canals, lakes, ponds, puddles & mud. It requires no mixing, is easy to pour & rapidly dries crystal clear in 36-48 hours to an impressive light stable, highly reflective, gloss finish.

Can be coloured with water-based dyes & paints & textured as it dries. Increase depth by adding layers. Used for water where the surface is exposed to air for drying. Not suitable for very deep water or enclosed water applications e.g. drinks & goldfish bowls.

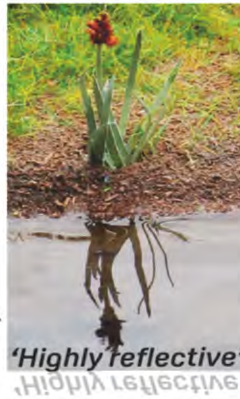
- Highly realistic reflective finish.
- Light stable.
- Pour in thin layers up to 3 mm.
- Can be textured.
- Touch dry in 5.5 hours.
- Non-toxic & low odour.

Aqua Magic

BD64 250 ml **BD65** 125 ml

Covered area at 3 mm depth

	BD64 250 ml	BD65 125 ml
cm ²	750	375
in ²	116	58



Tips (on using Aqua Magic):

- 1 Level your scene
- 2 Pre test on unknown riverbed materials or paint
- 3 Allow to dry before adding more layers max 2-3mm depth
- 4 Test added colourants, paints or dyes for compatibility & drying.

Making Waves

BD39 100 ml

For creating waves, ripples, waterfalls & moving water effects.



Making Waves is a one part, clear setting, water based, low odour resin that holds its shape, even on vertical surfaces.

It may be used to:

- make shallow water effects eg. streams, puddles.
- texture

- texture **Solid Water** (BD35), (BD36) surfaces with waves.
- texture **Scenic Fibres** (BD28) for waterfalls.



Smart Plastic

BD63 125 g

Heat mouldable modelling plastic. Melt & then mould in your hand. A white modelling plastic that is easily melted in hot water (40-60°C / 100-140°F) to a soft consistency, ideal for hand moulding to any shape.

Smart Plastic sets in 3-4 minutes to a tough, flexible plastic that can be re-melted. It is highly versatile in use & ideal for: custom fabrication, impressions, masks, moulding, prototypes, design, craft, repairs, strengthening & filling plastics & other materials.

- Quickly cools to handle.
- Setting is accelerated by cold water.

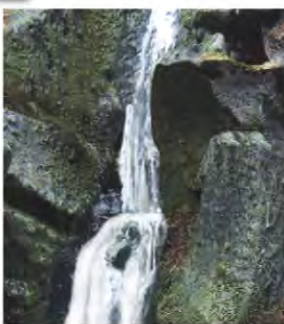


Scenic Fibres

BD28 0.5 m pack

Scenic Fibres work with **Making Waves** to allow easier, faster & more realistic modelling of moving & white water, eg. waterfalls, rivers.

Forms a base onto which **Making Waves** can even be brushed down vertical surfaces in waterfalls.



Scenic Water

BD43 125 ml

A re-meltable one part resin that pours, flows & sets as you want it. Best suited for small liquid projects e.g. simulating drinks & many food items incl. jams particularly in enclosed containers.

Melts at around 60°C (140°F). Avoid direct contact with metals - pretreat with lacquer.



LEARN MORE



Solid Water



Aqua Magic



Track Magic is a special cleaning fluid for model rail & car tracks, electric contacts & wheels.

- Improves conductivity for a smoother running performance.
- Works in low power/confined space situations.
- Revives old electric contacts & improves new ones.
- Long term protection to reduce maintenance.
- Leaves no oily residues.
 - Dielectric Constant 1.9.

Track Magic

AC13 50ml, 1.7 oz AC26 250ml, 8.5 oz

Keeps your train running more smoothly for longer!



Track Magic should only be used on conductive parts. Take care when applying, mopping up any excess if spilt onto plastic parts.

Apply **Track Magic** using a soaked swab or supplied sponge or in tricky confined areas with the fine brush applicator supplied. Suitable for track cleaning vehicles.

Track Magic Accessory Pack (AC18). Specially developed kit of 3 swabs & one micro brush for easy application of **Track Magic**.



Track Magic cleans by dissolving microscopic oily contaminants. It evaporates completely leaving a dry, protective, conducting, invisible film, reducing the need for further track maintenance.

VIDEO LEARN MORE



LEARN MORE



Living Steam

AC 21 90 ml



Scent & smoke oil. For creating authentic steam railway scent or scented smoke.

Living Steam - a uniquely designed, non-flammable fluid for the generation of realistic, nostalgic odour of steam railways.

LEARN MORE



Living Steam is non-flammable making it probably unique in the market place.

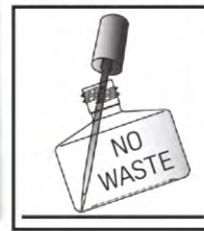
Plastic Magic Glue Brush

AC25

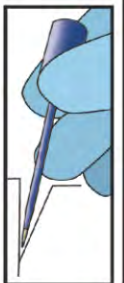


Pack of 3 brushes for the application of **Plastic Magic (AD77)** & **Plastic Magic 10 Sec Cement (AD83)** to small scale tiny parts.

The superfine, long reach brushes will deliver the tiniest drop of solvent adhesive even to difficult joints.



- High precision.
- Long reach for tight places.
- Enables clean glue action.
- Delivers tiniest drop.
- Reaches last drop in the bottle.



Strip Magic

AC22 125 ml



A fast acting, spreadable & controllable paint stripper that will soften & remove paints & primers, in typically 5-15mins according to paint type.

- Softens & removes paint from plastic in minutes.
- Works on acrylic, enamel, cellulose & oil.
- Stays where it is applied.
- May be used on plastic, resin, metals etc.
- Non-corrosive, non-flammable.
- Removes decals & lettering.

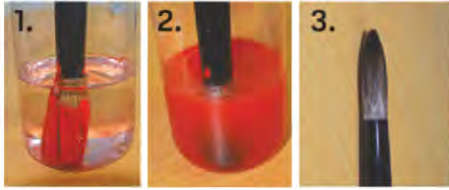
LEARN MORE



Clean up with methylated spirits or rubbing alcohol.



Brush Magic is a powerful, non-flammable airbrush and brush cleaner for the rapid removal of all types of wet and dry paint.



- Washes away with water to a clean, non-oily surface.
 - Non-volatile & low odour.
 - Dissolves acrylic, enamel & cellulose paints.
 - Dissolves epoxy & polyester resins before they are set.
- If decanting, use only glass or polythene containers.

Brush Magic

AC19 125 ml



Tip: Use to remove wet or dry PVA marks from wood prior to staining.

Brush Magic has been tested with: all types of modelling enamel & acrylic paint lacquers, all types of brushes: sable, nylon etc., & most types of airbrushes with Teflon or O-ring seals.



Pin Flow

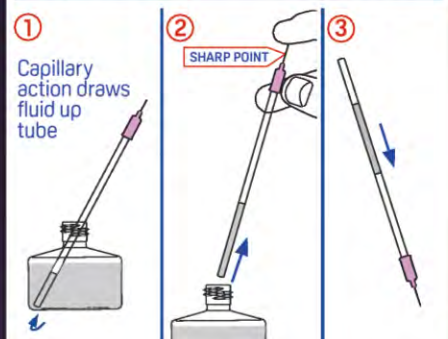
AC11

Solvent Glue Applicator

An applicator specially designed for the precise control of liquid solvent plastic adhesives such as **Plastic Magic (AD77)**, **Plastic Magic 10 Sec Cement (AD83)** & **Roket Blaster (AD17)**.



When even a brush can sometimes deliver too much, this breakthrough device will deliver just the right amount of adhesive to bond the most intricate parts. Prevents glue runs. Creates invisible joints especially on clear plastic. *Not suitable for dispensing cyano (ca).*



Pin Flow Replacement Tips (AC24)
Not suitable for dispensing cyano (ca).



Pin Point Syringe Kit

AC8

Pack of 2 dispensing syringes & 3 sizes of stainless steel needles for accurate application of water based glues:

- **R/C Modellers Canopy Glue (AD81)**,
- **Speed Bond (AD10)**,
- **Aliphatic Resin (AD8)**,
- **Tacky Glue (AD86)**,
- **Decorator Glue (AD26)**.



Easy to clean syringes & tips using warm soapy water. Stop tips clogging by resting on damp sponge or in water.



Pin Point Bottle Kit

AC10

For precision gluing. A small soft dispensing bottle ideal for minute application of water based glues such as **R/C Modellers Glue (AD81)**, PVA glue & fluxes. Ideal for many tasks where fine, finger controlled gluing action is needed.

It is supplied with a variety of three plastic & metal tips that are easily cleaned with water after use.



Pin Point Applicator Kit

AC28

For precise glue application.

Use with **Precision Plastic Glue**, **Laser-Cut Kit Glue**. Use also with **Super'Phatic!**, **R/C Modellers Glue** and **Speedbond** if used with alternative caps found in **Roket Re-Cap kit (AC16)**. *Not suitable for cyanoacrylate adhesives.*

- 25mm stainless dispensing applicators: 3 x 20 gauge (**Precision Plastic Glue**), 3 x 21 gauge (**Laser-Cut Kit Glue**)
- 1 cleaning pin (stainless steel)
- 3 plastic safety closure covers.



LEARN MORE



Brush Magic



Pin Point Bottle Kit



Pin Flow



Eze-Kote

BD37 500ml

Laminating & finishing resin for balsa & foam models. **Eze-Kote** is a one part water based, foam-safe, low odour resin alternative to epoxy. Brush onto balsa & light glass cloth to create a tough, ding & fuel resistant film that can be sanded easily & painted after 20-30 minutes.



Coverage:
500ml pack
covers 6 m² of
glass fibre fabric.

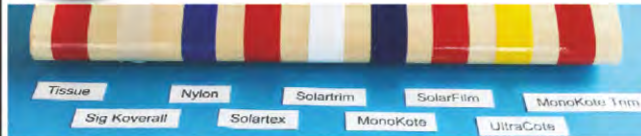


Aerokote Gloss & Catalyst

BD45 150ml Spare Aerokote Catalyst available as **BD47** 15ml

Tough, high gloss, 2 pack, fuel resistant lacquer. For brush or spray application. Touch dry in 5-10 minutes for dust free finish.

Comes as 150 ml laquer & 15 ml catalyst. Coverage approx. 1 m². Mix well (10:1). Adding more catalyst does not make it set more quickly. Using less will mean that it does not fully set.



Tip: Always test on scrap material with the same surface before application. Ensure surfaces are clean, dry & that any paint, especially enamel, is fully hardened especially when applying by brush.

Best applied with an airbrush using a light dusting coat, allowed to dry (min 4 hours) followed by further coats to build the required finish. Thin with high quality thinners designed for 2 pack paint.



Resistant to hot alcohol, gasoline or kerosene containing high nitromethane & mineral, castor, synthetic ester, or poly-glycol synthetic oils.



Converts **Aerokote Gloss** to satin or matt finish. A simple matting agent that blends readily with **Aerokote Gloss** to give it a satin or matt finish. Just measure & add "Make it Matt" to **Aerokote Gloss** in the quantities as tabulated below & then add **Aerokote Catalyst** to the mix in ratio 10:1 as usual & mix well.

Aerokote Make It Matt

BD61 50ml



Finish	Gloss	Satin	Matt	Dead Matt
Aerokote Gloss	25 ml	25 ml	25 ml	25 ml
Make it Matt	0 ml	8 ml	16 ml	25 ml
Catalyst	2.5 ml	3.3 ml	4.1 ml	5.0 ml



Finishing products



Weight: 10 g / m² (0.3 oz / yd²). Specially developed carbon fabric for surfacing & strengthening lightweight materials such as balsa, ply & foam. It is rapidly bonded using thin glues such as **Roket Hot** (AD43), or laminating resins eg. **Eze-Kote** (BD37), **Eze Dope** (BD42) & **Aeropoxy** (BD1). It is not designed for tissue covering of models.

Uses include:

- Reinforcing undercarriage mounts.
- Wing joining.
- Servo trays.
- Propeller blades.
- Foam surfacing.

Carbon Fibre Tissue

BD62



Carbon Fibre Mat

BD66 0.25m²,

75cm x 33cm pack

Tease into place for contouring & shaping.

Chopped carbon fibre mat, for use with epoxy resins such as **Aeropoxy**. Its non-woven structure enables laminating tasks where shaping & contouring are required especially in tight applications.



- Easy spread for contouring.
- Easily cut & thinned for lighter weight.



Aerokote



Carbon Tissue





Fills fine gaps.
Creates invisible seams.
Water clean up.

Perfect Plastic Putty

BD44 40ml



Perfect Plastic Putty is a one part, fast-drying, white, superfine filler with good adhesive & sanding properties on plastic. Easily used, even in awkward areas. Apply with small spatula, smooth & allow to dry.

Perfect Plastic Putty:

- Dries quickly without cracks to an ultra smooth finish.
- Fills deep cavities & takes paint easily.
- Low odour.
- Ideal for texturing.



Now packed in "NEW" aluminium tube



Aeropoxy

BD1 300 g

300g pack covers approx 2m² using 34g/m² glass cloth.



Super-thin epoxy for wing skinning, laminating and moulding.



Use with lightweight glass cloth to add strength and toughness to models.



Eze Dope

BD42 250 ml

IMPROVED FORMULA
A specially formulated water soluble dope for shrinking, strengthening & wind-proofing model tissue paper. It is non-flammable, has little odour & dries rapidly to a semi-matt fuel-proof finish.

Can be used to apply tissue decoration to all types of foam. When dry & cured the finish is totally fuel proof to both diesel & straight glo fuel.



Solution 30% Eze Dope:70% water



Tip: When diluting use soft or distilled water.

Recommended by:



Foam Armour

BD50 250 g

- Creates a hard durable surface layer on foam & wood.
- Ideal for scenics, model aircraft etc.

A thick, water based resin that sets to produce an attractive, durable, scratch-resistant coating on foam to prevent dings, wear & disintegration. It dries to a surface that can be painted & glued easily & will reduce damage.

- Easy to apply.
- Seals surfaces, gaps & foam edges to prevent disintegration.
- Can be over-coated or mixed with acrylic paint.
- Is easily glued and worked.
- Bonds grass & scatter materials.

250g covers 0.7 m² / 7 ft²



Wonderfill

BD48 240 ml

The next generation of strong lightweight fillers for foam & wood. An easy sanding, strong, lightweight filler designed to fill small gaps & indentations.

Easily applied, smoothed, then sanded back. Does not crumble like other lightweight fillers & can be over-coated with Deluxe Materials **Foam Armour** (BD50) for improved surface toughness & finish before being painted.



Model Lite

BD5 White 240ml BD6 Balsa 240ml

Strong, lightweight filler which sands easily. Use only where a strong joint is not required. Use for grain filling by applying with plastic sponge. Bonds: Wood, foam, fibreglass. *White or balsa tint.*

Use to blend in with natural finish or under clear covering film in aeromodelling.



Milled Fibre

BD69 50 g

Glass fibres for strengthening and thickening resins & cyano (ca). Stir fibres into epoxy and polyester resins to thicken and improve their toughness, flexural strength, crack resistance and dimensional stability.

To use with cyano adhesives:

May also be used with thin penetrating ca [eg. **Rocket Hot** (AD43)]. This will produce an extremely adhesive, hard & tough material. Caution: will cause heat.

Suggested uses:

- Strengthening filler for epoxy or polyester.
- Rapid repairs to thin composite sheet using ca glue.
- Creating fillets.
- Reinforcing joints.
- Thickening epoxy.



Model Lite



Foam Armour



Wonderfill





Epoxy Wing Joining Kit

BD10 50 ml

Laminating epoxy & lightweight glass cloth* in kit form.

Kit provides sufficient quantity to join a set of wings.

*Length 75 cm x 10 cm width



Liquid Gravity

BD38 240 g

A non-toxic, easy flowing, weighting system for scale military models, railway rolling stock, model planes, boats & cars. Specially designed to pour into small cavities & set in place with your favourite Rocket cyano (AD43-46), or Speed Epoxy II. Use to improve appearance of dolls house curtains, cushions, bedspreads, adjust balance point of model planes, boats & submarines. 50ml bottle weighs almost 0.25 kilo!



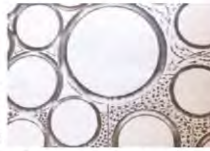
Lightweight, free flowing, white powder which is mixed with polyester or epoxy resin to make an easy sanding strong filler. Can also be used to create snow effects (smaller than 1:48 scale) with Scatter Grip (AD25) glue.



Micro Balloons

BD15 240 ml

Close up of Micro Balloons mixed into Speed Epoxy.



Super Lightweight Fibreglass Cloth

BD11 24 g/m² (2 m²) BD12 34 g/m² (1 m²) BD13 51 g/m² (1 m²) BD14 78 g/m² (1 m²)

For laminating with Eze-Kote (BD37) or Aeropoxy (BD1). Unique fabric finish for better "wetting out" & strength.

Apply Eze-Kote finishing resin to fibreglass for a smooth, durable finish.



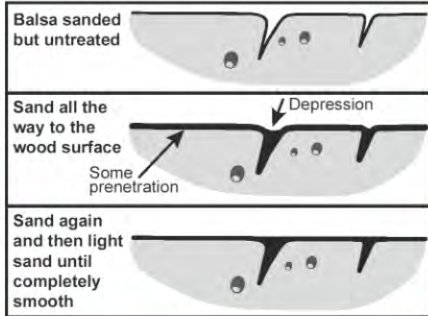
Sand 'n' Seal

BD49 250 ml

A specially formulated wood grain sealer. Coats & seals wood grain prior to painting & finishing. Use with all types of paints including enamel, cellulose, acrylic or epoxy.

Enhanced Grain Sealing

Stir thoroughly before use. Apply with brush & allow to dry. Sands beautifully after 60 mins. Clean brushes with water. Economical in use. Low odour & non-flammable. 250 ml covers 1.5 m².

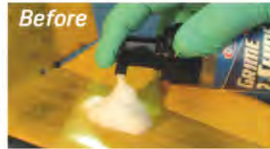


For perfect, effortless cleaning of models to a showroom shine.

Foaming cleaner for removing dirt and oily grime from models, pit boxes, tools etc. Non-flammable. Cleans off residues of glow, petrol, gasoline and diesel fuels. Safe on paint, plastic film, metal. Foams & stays on station for controlled working action.

Grime 2 Shine

AC27 225 ml



For a shiny, reflective, glassy or wet look on plastic.



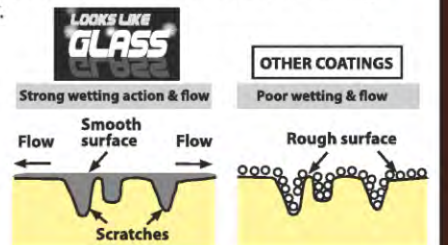
Looks Like Glass

BD67 100 ml

Super-thin, water-based, transparent fluid which creates a smooth glass-like effect on kit plastics. Simply dip parts and allow to dry for 2-3 hours. Surface detail is retained. Also use for sealing scatter.

Suggested uses:
Glass-like finish on canopies, windows etc.
• Adhesive for clear windows.
• Creating a wet look on plastic.
• Create smooth plastic surface to assist transfer application.

Packed in a tall, stable, clear plastic container.





Fully synthetic model gasoline engine 2 stroke oil.
High temperature protection.
Accurate & easy mixing.

A unique, full synthetic, high detergent 2 stroke oil. It works at all recommended ratios for 2 stroke gasoline air & water-cooled engines used in model aircraft, cars & boats. It can also be used in 4 stroke engines when the manufacturer recommends a good quality 2 stroke oil. For diesels too!

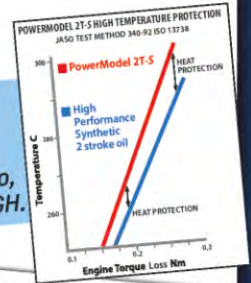
- Safer running at high temperature.
- Maximum resistance to seizure & wear in extreme conditions.
- Cleaner exhaust emissions.
- Outstanding tickover stability & throttle response.
- Outstanding piston cleanliness.
- Attractive odour.
- Protection while the engine is switched off.
- Outstanding fresh & saltwater corrosion protection.



Power Model 2T-5

LU01 500ml

7 official engine maker approvals! Includes famous engine makers Desert Aircraft, OS, Saito, RCGF, DLE, Evolution, NGH.



O.S. ENGINE & LOCOMOTIVE

Certificate of Approval

We approve that Power Model 2T-5 oil made by Deluxe Materials Ltd, proves its high quality suitable to the gasoline engines manufactured by O.S. Engines Mfg. Co.

Suitable for:
Desert Aircraft, OS, Evolution, DLE, Great Power Model Engines, Saito, Zenoah, MVVS, NGH, DLA, MOKI, PAW, ZDZ, 3W & BME engines at manufacturers recommended ratios.



Sustained high temperature performance,
cleaner & safer emissions.

Power Model Jet Oil

Synthetic, model turbine oil

LU02 1 litre LU04 5 litre LU05 200 litre

Power Model Jet is the first fully synthetic, environmentally friendly, purpose made model turbine oil designed to combine sustained maximum turbine performance with safer emissions. Suitable for all makes of turbine engines running on kerosene or diesel fuel/oil mixtures if used in accordance with manufacturers recommendations.

LEARN MORE



- Maximises turbine performance.
- Cleaner and safer emissions.
- Free of toxic additives.
- Non-flammable, safe to handle & transport.
- Will not discolour modelling paints, finishes & fuel systems.
- Easy 20:1 mix.



We added a distinctive green dye for rapid recognition in fuel. Dyes are not used in full size turbine oils.

Jet A3 fuel
20:1 mixture
PowerModel Jet



GRAVITY

Now used by Gravity Industries.
<https://gravity.co/>

It is the only oil in the world approved to date by eight manufacturers. Approved by:



Ultimate model aircraft
rubber lubricant.

Eze Wind

LU03 50ml

Maximises flight performance of rubber powered models.

Eze Wind is a supreme silicone gel lubricant designed to prevent chafing & minimise friction on rubber surfaces. It will maximise energy storage & sustain motor power for that ultimate flight performance.

It will deliver tighter & safer motor winding with the highest sustained power.

Eze Wind is also:

- anti-fling thus preserving model cleanliness
- harmless to rubber
- more stable over time
- safe on hands.



LEARN MORE



Eze Wind



Power Model 2-TS

Perfect Plastic Putty - It's more than just putty!

Jezz Coleman shows you how to fill fine gaps, create weld seams and create mud spatter



Perfect Plastic Putty is a one-part, fast-drying, superfine filler with good adhesion and sanding properties on plastic and can be cleaned-up with water. Here's how....



The 1:48 Tamiya 'Dingo' Scout Car, Perfect Plastic Putty and Pin-Point Syringe Kit used in this guide.



You can use Perfect Plastic Putty for scratch or dent repairs. Just squeeze a thin line of putty from the tube.



Sand with very fine grade paper.



Select a suitable tip, and apply to your model.



Use the spatula to spread the putty. Once dry, polish carefully with a fine grade sanding stick.



Colour Perfect Plastic Putty with water based paint for adding mud or spatter. Add this into the syringe.



Blend and add pigments until you have the desired effect.



Use the Pin Point Syringe Kit method to create weld seams or fill very small joints.



Here is the finished result!

Why not make Deluxe Materials

Perfect Plastic Putty your next choice?



Creating Real Rust -



George Dent shows us how to create an authentic rust effect

The complex tones and textures of corrosion can be challenging to create.

However, why not use the real thing to portray rust?

Thanks to Deluxe Materials' **Scenic Rust**, it's possible for any modeller to create a real authentic rust effect.



The instructions suggest mixing the metal powder with the binder fluid to create a paste. However I brushed some thin, random deposits of the sticky binder fluid onto the wagon's bodyshell.



Once dry, the fine metallic powder was then sprinkled on top. (wheels removed to ensure none got stuck in the axle bearings.)



The next morning rust had developed. I repeated the process covering the interior of the wagon too.



Though not essential, I then gave the body work and chassis a light coat of matte varnish to seal in the rust effects, for later weathering.



After working my way round the wagon, I then cleaned the surface with a small brush.



More Scenic Rust Powder and developer led to a much coarser texture perfect for the wagon interior.



A dirty brown and dark grey weathering powder was lightly brushed over the exterior and interior using downward strokes, creating final streaking effects.



Scenic Rust Developer was then brushed over the metal powder deposits and set aside overnight for rust to appear.

Tips:

1. Keep Scenic Rust powder metal particles away from electrical or mechanical components eg. by removing wheels axles before application
2. Always use clean brushes for application of the Binder Powder and Developer, washing in water after use.



There are countless uses for Scenic Rust from locomotive hulks or scrap cars and there's plenty of scope for experimentation. Scenic Rust now has a much finer grade of powder ideal for more subtle corrosive effects especially on small models.

Light and Eze - Eze Tissue the first choice covering for the Centurian, the latest model from Vintage Models



Eze Tissue

Eze Tissue Designer

Andy Sephton shows how Eze it is to cover this lovely Centurian model.

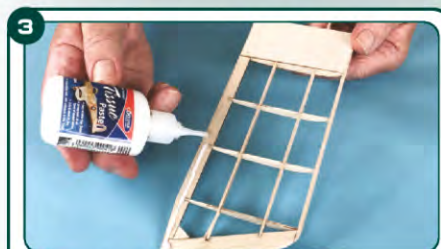


The model ready for covering with **Eze Tissue**. Bond it with **Tissue Paste** and airproof with odour free **Eze Dope**. Note conventional dope is not suitable for coloured **Eze Tissue**.



A neatly finished framework is half the battle in achieving a smoothly finished model.

The tissue is cut out according to grain with a 1-2 cm overlap all round.



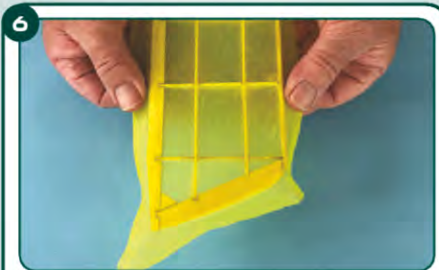
Deluxe Materials **Tissue Paste** was applied and smoothed to the outer edges.



Eze Tissue can be applied wet or dry. **Wet technique is the best method** except for undercambered wings. Soak the tissue in a 5% solution of **Eze Dope** before applying to the airframe.



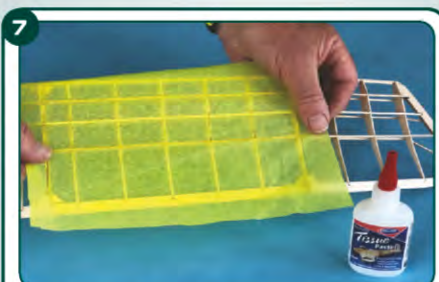
Place the tissue in the long dimension and rub down to adhere the structure.



Rub the tissue over the short dimension, leave to dry.

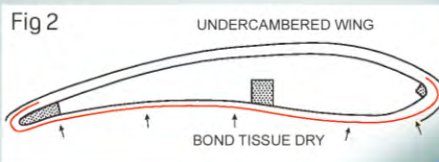
Trim excess using a sharp blade.

Cover the other side of the structure in the same way (see Fig 1) below for the arrangement.



Rub dry the tissue over the short dimension, leave to dry.

*Undercambered structure (Fig 2) apply **Tissue Paste** and rub **dry** tissue down adhering to the surface.*



When dry, apply multiple coats of 30% **Eze Dope** and 70% water.

Tip:
Thin structures: wet only one side at a time and keep the wet surface underneath so gravity keeps it away from the other surface.



Apply **Eze Tissue** trim using a 5-10% solution with soft wide, brush.



A lovely model.
Well done Andy!

Showing you how to...

Showing you how to...



Traffic Lights & rainbow stripes -



the glow in the dark jams that only Einstein could create

It is almost impossible to create multi coloured layers in jam, jellies and marmalades but not so in the world of miniatures. You can now do it with the new **Solid Water**.



1 We selected our tiny jars and added labels for our Traffic Jam spread.

2 We accurately weighed 5g of the resin on scales.

3 2.5 grams of hardener were added using the second clean syringe. Mix ratio 2 parts resin : 1 part hardener by weight.

4 Mix the resin and hardener thoroughly. You can't over-mix. **Solid Water** is thin and bubble free.

5 Translucent oil based glass paints that were pre-tested to check that they did not stop the **Solid Water** mix setting were used.

6 A few drops of green paint was then stirred in.

7 Green resin mix was then added to the jar using a clean syringe. Testing it with a wooden cocktail stick to make sure it's set before adding the next colour.

8 The second layer of yellow is easily added over hard green **Solid Water**.

9 The last red layer has been added along with the label.

The selection of jams is limited only by your imagination. Einstein says "**Solid Water** is my first choice for jam and potion making".



Thanks to Jenny Kelm of Kastlekelm miniatures. kastlekelminiatures.etsy.com



Apply - Light - Set



If you want to save time building models, then look no further than Deluxe Materials **Roket UV**.

If you want to create headlight lenses, landing lights, or simply want crystal bonds to coloured translucent plastic, **Roket UV** is just for you. *Jezz Coleman* shows you how **Roket UV** will do just that and save you time too!

1 Deluxe Materials **Roket UV** glue has many applications for all genres of scale modelling.

2 **Roket UV** as easy as 1,2,3 to use. Apply glue to parts that need bonding, shine torch within 5-10 mm for 6-8 secs and you have instant bond.

3 **Roket UV** bonds most materials. Shown here is clear acrylic rod, Aluminium tubing & wooden dowel.

4 **Roket UV** holds the clear headlight lens to this 1/24 Tamiya Nissan Skyline.

5 Applying to the canopy mounting points on this Revell F-16 Viper.

Tips:
Apply: Point tube away from face when opening.
Light: Shine the UV light using the torch supplied. Point light from a distance of 1 cm or less covering all the adhesive.
Set: A fast solid deep cure is triggered within 6-8 seconds

6 Activating with the UV torch for an instant bond.

7 Canopy in the right open position.

8 Creating a crystal clear landing light in the wing of this Airfix Cessna Bird Dog.

9 **Roket UV** glue is used here to create a glazed eye effect.

10 The torch can then be used to activate the glue through coloured clear parts.

11 No job too small. A headlight on this Meng Toon Tank creates a crystal-clear lens.



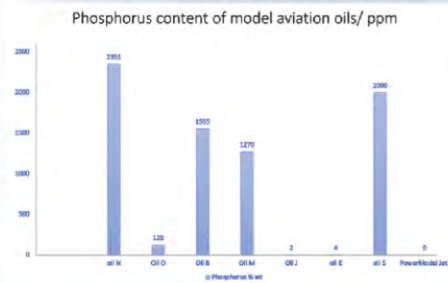


Why change to PowerModel Jet Oil?



1 Environmentally friendly

PowerModel Jet is an important, exciting new concept in jet oils – safer for your health and environmentally friendly. Full-size turbine oils often used in model jet engines, although high in thermal stability, are hydraulic oils and contain potentially harmful organo-phosphorus and not designed to be burnt.



Protecting the modeller from harmful chemicals is something we are passionate about. Our oil is therefore free of organo-phosphorus & being fully synthetic free of potentially harmful aromatics.

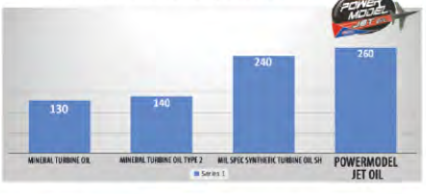
Read the full development story scan the QR code >>>



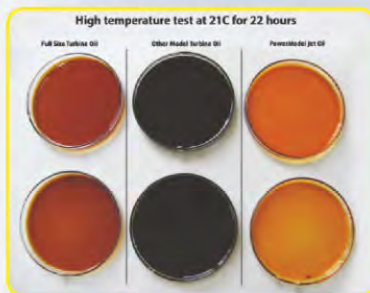
2 High temperature performance

Being synthetic it also has superior high temperature performance, shown by its high flash point.

Flash point of lubricants/ °C Mineral compared to synthetic



Tests showed the formulation far superior to another model turbine oil and equal to full size turbine oils.



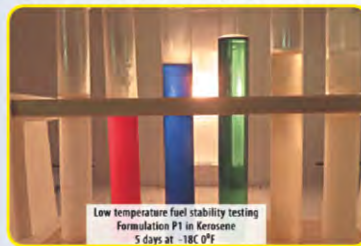
3 Recognition in the fuel

We added a distinctive green dye for rapid recognition in fuel. Dyes are not found in full size turbine oils.



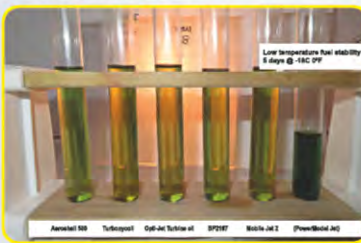
4 Long term stability in fuel even in cold

PowerModel Jet is readily soluble in kerosene and diesel and will stay dissolved over time even at low temperature.



5 It's easy to change over

There are no compatibility problems of mixing PowerModel Jet oil fuel mixes with other oil fuel mixtures.



6 Turbine makers approve it

It has been comprehensively field and bench tested in many types of turbines notably Kingtec, Behotec, AMT, Jet Cat, Xicoy, Jetsmundt, Evo Jet, Lambert Microturbines, Jets Italia, Turbine Solutions & Jet Central. **And is the only oil in the world approved to date by 8 manufacturers.**

Approved by:



7 It has been tested to the limit!

10-hour continuous running. A 55 million revolution test lasting 10 hours and consuming 283 litres of Kerosene and 13.5 litres of oil proved the oil quality to AMT.



Read the full test story to QR code: "Both ball bearings were in good condition after the 10 x 1 hour test cycle. In my opinion there is no need for additional tests at AMT to prove the quality of the oil!"



But don't just take our word for it. Join the many other modellers and flying teams who want to use PowerModel Jet Oil.



Stop press!

GRAVITY

PowerModel Jet Oil is also being used by Gravity Industries, manufacturers of jet suits for human flight.



"I no longer need to hold my breath. No going back to my normal turbine oil that's for sure! We believe the product is greatly appreciated by many modellers and flying teams worldwide and now in use." Azza Aerosports



L to R; Dr Francis Lau, Leon Mare, Mr Leo Cheung.



Showing you how to...

Showing you how to...



Building a LCUT Creative station kit



We show why they recommend Laser-Cut Kit Glue by name!

At the Warley Show, we were attracted to LCUT Creative's range of beautiful laser cut kits. We showed our Laser-Cut Kit Glue to *Jakub Stachula*. It was the perfect match. Here we show how our low viscosity, penetrating glue with fine applicator will result in an enjoyable build and better looking model.



The station kit with a beautifully illustrated instructions.



All the doors and windows were easily bonded with a thin layer of glue which easily penetrated the joint.



Here is the brick side with no excess glue showing.



Rest the glue tip on a damp sponge to avoid it's blocking while the glue dries.



The thin needle applicator is perfect for applying just the right amount of glue along the frame structure.



The long reach needle is also ideal for applying the last bit of reinforcing before fitting the roof.



It also comes into its own for applying the tiniest amount of glue needed on these ridge roof tiles.



Tip: always trim parts to ensure correct fitting as on these chimney parts. The glue has fast grab.

Tips:

1. Flush the tip under water after use
2. Use fine pin to remove any excess water/glue that might block the tip for later use.
3. Use the sealing plug to avoid spillage.



Well done LCUT Creative on a beautiful kit that would inspire any young modeller to build.

Coastal water made easy - without the cost *George Dent* shows you how



We are using a Revell fishing trawler to show a new way of creating a deep water effect. This method avoids making it an expensive job.



Mark out the hull shape onto the polystyrene, working to the desired sunken depth. Allow mooring space next to the harbour wall.



Take time to get the ship fitting snugly at the correct depth and level.



Heat Waves: The surface of the polystyrene foam is easily shaped with a mini blow torch as used in cooking. Run the torch at low heat very quickly over the surface to create ripple and wave effects. Be careful to keep the tool moving.



Refine the polystyrene surface using **Create and Shape**, and then rub flat with fine abrasive.



The foam surface must be sealed before painting using **Foam Armour**, a thick gloopy liquid.



Painting water is an art in itself, but start with green followed by shades of blue. Darker areas can be painted in to mimic the mirror effect of dark water close to the hull.



Water is made using **Aqua Magic**. Then **Making Waves** is added in random patches, to mimic lapping water. **Making Waves** can then be built up in layers.



Making Waves dries translucent, but use a flat brush and light grey paint to pick out wave tips.

The Revell trawler sits snugly into the polystyrene yet remains removable for transport.

Well done George, a wonderful North Sea fishing fleet project!



Fixing a jump jet!

Building the Kinetic Sea Harrier F/A-2 with *Jezz Coleman*.
Shows the best uses for our two *Plastic Magic* glues.



Jezz Coleman at his workbench with all the products used in this build.

Products used in this build of the 1:48 Kinetic Sea Harrier were:
Glue'n'Glaze (AD55),
Plastic Magic (AD77),
Plastic Magic 10 sec (AD83),
Liquid Gravity (BD38),
Roket Hot (AD43).



Use **Plastic Magic 10 sec** where a longer working time is required. This is ideal for gluing the fuselage. This product has a 10-15 second adjustment time.



Plastic Magic 10 sec allows an adjustment time before bringing parts together, leaves no residue, and gives a neat and invisible joint.



Plastic Magic 10 sec once again is the ideal product for joints that need time. Spread around the wing.



There is plenty of adjustment time after bringing the parts together.



For parts that need instant bonding use **Plastic Magic** (AD77). The high precision brush gives a clean, neat invisible joint.



Plastic Magic will also give an instant, invisible bond to any joint.



The high precision long reach brush enables perfect gluing in exposed outside parts or difficult places.



Liquid Gravity acts as a free flowing weighting system and is non-toxic. Pour to the desired weight.



Apply a drop of **Roket Hot** cyano to set it.



Canopies are tricky, so **Glue'n'Glaze** is perfect for this. The product dries crystal clear and gap fills. Apply to the parts to be bonded and hold in place for around 15 mins until dry. Clean up any excess with water.



Showing you how to...

Building a MicroAces Scrappee Stag



Showing you how to...

Foam 2 Foam is quick-drying contact adhesive ideal for Depron, ply and carbon fibre in this kit. It is strong, dries clear and flexible. Remove any excess with petroleum lighter fluid.

Super'Phatic! is thin, penetrating, odourless, lightweight, foam safe and its wicking action makes it ideal for lightweight, slot-together foam joints as well as plywood, & carbon fibre parts.

In this build we show you how we have used **Foam 2 Foam** and **Super'Phatic!** adhesives in a few key stages through the build of this *MicroAces Scrappee Stag*, 427mm span staggered wing biplane.



The kit contents includes accessories, laser-cut 1mm and 2mm Depron parts, sticker sheets, perfect for our choice of **Super'Phatic!** and **Foam 2 Foam** adhesives.



With the formers positioned on the keel, **Super'Phatic!** can be wicked into each joint.

Foam 2 Foam easy clean up:
Try using a spot of petroleum lighter fluid on a tissue for removing excess **Foam 2 Foam** or cleaning the tip.



With some fine pencil guide lines marked on the fuselage, it is easy to apply adhesive to each former's position.



The fuselage has been scored and bevelled before it is attached to the keel assembly using **Foam 2 Foam**.



Using the tip of the tube, it is possible to add a little more **Foam 2 Foam** to strengthen the joints.



Thin carbon fibre is added to the Depron elevator's hinge line and bonded with **Super'Phatic!**



Foam 2 Foam has a very quick grab time, so a joint like this can be aligned and held in position by hand until the glue begins to dry.



A thin bead of **Foam 2 Foam** is used to glue each wing panel together - simple to do as the glue isn't at all 'stringy' in use.



As the fin locates in slots in the tailplane, a small bead of adhesive on its base is sufficient to hold it firmly in place.



A couple of small beads of glue were used to attach the motor and gearbox assembly to the pre-cut plywood motor mount.



The lower wings are made similarly to the upper wings. **Foam 2 Foam** is run along the top and bottom join plus the spar.

Foam 2 Foam strong, clear, flexible;
Super'Phatic! thin, penetrating, odourless, lightweight, foam safe...

...make assembling this model a pleasure!





Water artistry



The creation of a realistic water scene can be one of the most challenging tasks facing a railway modeller.

In this piece we show you how to create a realistic river with colour and depth using **Aqua Magic**, a new, light stable water system with no mixing.



Choice of paint:
Use colour to create the illusion of depth. **Aqua Magic** works with most types of paint technology as you can see acrylic, enamel and oil. Make sure your base is dry. Check paint compatibility on scrap before adding **Aqua Magic**.



Creating depth:
Choose the right colours as we said to create the illusion of depth. Here we chose 3 oil colours to cover our river bed.



Creating illusion of depth:
Rocks and reeds shown emphasize the areas of greater depth.



Refreshing a tired water scene:
Old tired looking lakes and rivers can be revitalized with the addition of **Aqua Magic** on top.



Colouring Aqua Magic:
Experiment with acrylic paints, glass paints or food colourings.



Adding layers:
Aqua Magic dries fully in 48 hours at 20C and you can then add extra layers to create depth. Don't add more than 2/3 mm at a time.



Adding Surface effects:
Use **Making Waves** to add water movement ripples waves etc. Here you can see **Making Waves** have been used to good effect.

Our Water collection:
Whether it be river, lake pond or sea, make **Aqua Magic** your first choice for your next water project.



Looks Like Glass

For a shiny, reflective, glassy or wet look on plastic.



Clear plastic parts are often the finishing touch to a model but can be poorly finished or damaged before being added to the model. Unlike other parts they can't be filled easily or coated without losing surface detail ... enter **Looks Like Glass** which also has many other uses. **José Brito** and **George Dent** explain.



First up a simple model aircraft canopy. It is dipped into the container and held for a few seconds before removal.



Excess fluid is easily removed with a brush and some tissue paper. This part is left to dry in a dust free environment for 2-3 hours.



Once dry, the glass look is stunning and very realistic.



It worked beautifully on these railway carriages too, restoring the windows to beautiful condition with the thin glass like film that will resist further scratching.



Here **Looks Like Glass** is used in a different way. The glazing is first placed ensuring a snug fit and correct orientation.



Looks Like Glass is then applied to cover the entire glazing pane, allowing the super thin fluid to run into the gap around the edges, repeating if necessary on the inside.



A great final result.



It also be used as an aid for decal application. It is applied by brush, creating an ultra-smooth surface. Decal application then becomes effortless. A further coat will protect the decal if weathering effects are to be added later.

- Creates a glass-like finish on clear plastics.
- Is ideal for bonding clear windows.
- Is ideal for wet look effects.
- Is great for applying decals.
- Being water based, it's safe to dip, brush or spray and it won't yellow with age.



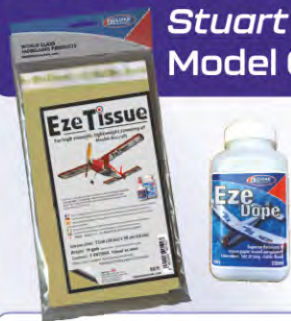
Why not try **Looks Like Glass** for a realistic glass-like finish on clear plastics or that "wet look" finish on painted surfaces!

Showing you how to...

Breathe Easily -

Stuart Marsden has fun building and covering the Vintage Model Company Sparrowhawk with Eze Tissue and Eze Dope.

Showing you how to...



Stuart Marsden builds and covers the rubber powered Sparrowhawk with **Eze Tissue** and airproofs with low odour **Eze Dope**, rather than a traditional cellulose dope.



Here is where we start the new Vintage Model Sparrowhawk with the products

- **Speedbond pva**, **Roket Hot** were used for construction.
- **R/C Modellers Glue** for clear canopy.
- **Speed Epoxy** for high strength across the wing joining gap.
- **Eze Dope** and **Tissue Paste**.



For the build, Stuart used a penetrating cyano, **Roket Hot**, but **Super'Phatic!** (AD21) is an alternative for anyone allergic to cyano.



Fill any small holes with **Model Lite** and join the two wings with **Speed Epoxy** for strength across the dihedral gap.

Cover with **Eze Tissue** using **Tissue Paste** and **Eze Dope** - see article by *Andy Sephton* for techniques - then finish with **Eze Dope**.

Stuart chose **Eze Dope** because it:

- achieves a good airproof finish in 3-4 coats
- is odourless so you can work indoors
- does not sag in damp weather
- minimises weight gain
- is safe and hazard free
- is low in cost
- is easy to buy by post.

You will use two different strength solutions of **Eze Dope** in soft water (distilled or cooled, boiled water):
5% Eze Dope: 95% water for tissue soaking (wet method)
30% Eze Dope: 70% water for finishing.



The wet tissue technique.

The best method for complex curves to stop wrinkling the tissue. The tissue is soaked in the 5% solution of **Eze Dope**, laid in place, allowed to dry and then treated to 3 more coats of 30% solution to airproof.

Tip: Avoid brushing on excess dope as this could cause "puddling" and spoil the appearance.

Dry tissue technique.

For under-cambered wings see the *Andy Sephton* article on page 19.



Apply **Eze Dope** with a soft brush eg. makeup brush. Remove any excess dope.



Add extra trim using a 30% **Eze Dope** solution.



Eze Dope accepts acrylic, cellulose, enamel and conventional colour dope if you want to paint.



Ready to go. Let's find some **Eze Wind** rubber lubricant and check the weather!

See how well she flies!

Thank you Stuart for your aeromodelling skills.
 We can all breathe more easily now.



WORLD CLASS RAILWAY MODELLING PRODUCTS

deluxematerials.com

Smoke oil with authentic odour
LIVING STEAM

Trouble free bonding diorama backscene papers
BACK SCENE

For filling fine gaps in plastic railway kits
PERFECT PLASTIC PUTTY

Liquid weighting system for rolling stock
LIQUID GRAVITY

For dramatic snow scenes
Scenic SNOW

For temporary holding of small figures
FIX 'N' FLEX

For securing model railway track, street furniture, buildings & trees
FIX 'N' FLEX

For gluing scatter & foliage
STRIP 'N' STICK

Softens & removes paint from plastics in minutes
STRIP 'N' STICK

Fine powder adhesive for bonding ballast & granular materials
BALLAST BOND

For easy bonding of railway ballast
BALLAST BOND

Cleans, protects track for max response & reliability
Track Magic

For making ripples & wave effects
WAVING WAVES

For crystal clear & deep water effects
SOLID WATER

Dries tacky for bonding static grass & scatter
SCATTER GRIP

For white water effects, rivers, waterfalls
AQUA MAGIC

For modelling realistic water
AQUA MAGIC

For invisible joints on ABS, styrene etc. Low odour plastic cement
ROKET

Non-fogging grade for clear windows
ROKET

Cyano glue for common plastics, resin & metal
ROKET

Non-runny, gap filling cyano
ROKET

Creates real rust effects with texture
Scenic RUST

High precision, long reach brushes
BRUSH MAGIC

For precision glue lines
BRUSH MAGIC

Clean, neat, instant card modelling glue
GLUE 'N' GLAZE

For gluing & creating crystal clear windows
GLUE 'N' GLAZE

Card glue
GLUE 'N' GLAZE



Roket Cyano
 For fast wood joints & shingle

Decorator Glue
 For upholstery fabric

Speedbond
 For wood bonding

Solid Water
 For deep water e.g. bath, sinks

Scenic Water
 For domestic liquids, jams, food etc.

Liquid Gravity
 For weighting curtains, cushions etc.

Super 'Phatic!
 Glue for laser cut wood

Tacky Wax
 Temporary adhesive

Dolls House Wallpaper Paste

Glue 'n' Glaze
 For bonding windows

Aliphatic Resin
 For wood, furniture. Takes a stain

Sand'n'Seal
 For sealing wood before painting

Scenic Shovelled & Scenic Snow Kit

Brush Magic
 Cleaning brushes & wood prior to staining

Aqua Magic
 For shallow water in the bathroom

Scatter Grip
 For bonding & static grass in gardens

Aliphatic Resin
For wood with waterproof joints

R/C Modellers Canopy Glue
For bonding clear plastic windows

Fix 'N' Flex
For re-bonding decal edges

Speed Epoxy II
For high stress areas, bonding & filleting bulkheads

Aero Tech
Epoxy non-drip for wood to GRP

Wonderfill
Tough sandable wood contouring filler

Super 'Phatic!
For wood planking onto plastic deck

Super 'Phatic!
Wooden outside stringers to plastic / GRP hull

Super 'Phatic!
1/8" strip outside hull

Liquid Gravity
Ballast weight

Fusion
For high stress areas / joints, rudder, motor etc.

Plastic Magic 10 Sec Cement
For plastic deck to hull joints

Super Crylic!
For bonding & laminating wood & metal propshafts inside hulls

Sand 'n' Seal
For sealing wood before painting



Use Eze-Kote

For decades modellers have used fibreglass and epoxy resin to create a tough finish on balsa.

Now this job can be done with Deluxe Materials **Eze-Kote**.

An **Eze-Kote** glass cloth finish will accept most paints and it's safer, faster and cleaner to use. It is non-sticky, has no smell or waste and dries quickly. Furthermore, brushes can be cleaned with water and finishing can be done in one day.

Andy Sephton shows you how on the Chris Foss Phase 6.



Chris Foss Phase 6 kit with all the products that will be useful during the build of the model.



2 Eze-Kote with the 0.6 oz Super Lightweight Glassfibre laminating fabric (BD11), gloves, brushes, and scissors that you would need to undertake the Eze-Kote process.



3 The 0.6 oz glass fibre and Eze-Kote ready to start the project.



4 Apply an initial coat of Eze-Kote resin and allow it to dry.



5 Eze-Kote is then brushed through the glass fibre fabric. Note that any unused Eze-Kote can be returned to its container.



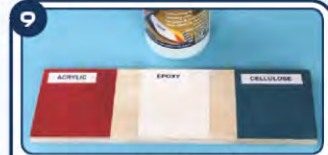
6 Excess fabric is effortlessly trimmed away using a Perma-Grit sanding block or 320 grit paper.



7 As you can see, a very neat edge is achieved without much sanding work.



8 Having sanded the wing, we tested Halfords White primer, and our chosen paint, Halfords Spray Ford Diamond White. **Eze-Kote** has good compatibility with most white car primer paints. If you're in doubt always check by testing the primer and paint top coat before committing to the model.



9 Here you can see we've shown **Eze-Kote** is compatible with Tamiya acrylic, Glass Kote epoxy and HMG cellulose paints. It will also accept conventional dope.



10 A second coat of **Eze-Kote** is applied after the glass cloth has been trimmed. After sanding and further filling if required, the model is ready for painting.



...how Eze was that!!

Showing you how to...

Technique and technology library

Some of our published articles past and present can be easily accessed by scanning the QR codes.

Note that some of our packaging will have been updated.



R/C and Aeromodelling

Lubricants

LU03 Eze Wind

For rubber powered performance.



LU02 Power Model Jet Oil

Questions and answers.



LU01 Power Model 2T-S

Oil benefits explained.



BD62 Carbon Fibre Tissue

For strengthening and surfacing.



BD45 Aerokote

Finishing and fuel proofing.



BD42 Eze Dope

A better way to finish a West wings Topaz.



Fuel proof trials.



Building and covering without the smell.



BD37 Eze-Kote

Fibreglass and floats.



Enhancing an authentic scale aircraft.



Covering a slope soar glider.



AD88 AD89 Roket UV

Uses in R/C Modelling.



AD60 Tissue Paste

Covering with tissue.



Plastic Modelling

BD27 Scenic Rust

Rust a 49 Ford.



BD29 Scenic Snow Kit

Military snow scene.



BD50 Foam Armour

For surfacing foam for diorama landscaping.



BD60 Create and Shape

For realistic ground and mud effects.



BD44 Perfect Plastic Putty

For gap filling, repairs and surface effects.



Scratch repairs, weld seams and mud.



AC22 Strip Magic

Removing paint from plastic.



Removing paint from Blenheim Bomber.



BD38 Liquid Gravity

Weight your wagon.



AC19 Brush Magic

Cleaning paint brushes and airbrushes.



Technology

How adhesives work.



How plastic glues work.



Development of AeroTsch.



Lubricants: 2 stroke oils explained.



Lubricants: advanced small engine lubricants parts 1 to 4.



Development of environmentally friendly turbine oil.



55 million revolutions: Power Model Jet Oil.



Railway

AC13 Track Magic

Cleaning and maintaining track.

**BD65 Aqua Magic**
BD39 Making Waves

Which Water?

**BD60 Create and Shape**

For moulding, casting and carving rock faces.



For stonework, rocks, paving slabs and groundwork.

**BD28 Scenic Fibres**

Making a waterfall.

**BD35 BD36 Solid Water**

Moving water, river project.

**BD33 Icy Sparkles**

Creating a frosty scene.

**BD27 Scenic Rust**

Rust a railway goods wagon.

**AD77 Plastic Magic 1s** **AD89 Rokat UV**
AD83 Plastic Magic 10s

Assembling T55 tank.

**AD55 Glue 'n' Glaze**

Creating small windows.

**AD75 Ballast Bond**

Railway ballasting.

**AD74 Ballast Magic**

Ballast your track, trees and dolls' house applications.

**AD61 Backscene Adhesive**

Previously 'VIEW GLUE', a bond for diorama backscene papers.

**AD57 Rokat Card Glue**

Assembling card kits.



Dolls House

BD44 Perfect Plastic Putty

For perfect patisserie.

**BD43 Scenic Water**

Making jams and scientific experiments.

**BD39 Making Waves**

Garden water effects.

**BD29 Scenic Snow Kit**

Winter street scene.

**BD35 BD36 Solid Water**
BD39 Making Waves

Dolls' house water projects.

**BD35 BD36 Solid Water**

Foamy bath with glass beads.

**AC19 Brush Magic**

Paint and glue stain removal.

**AD74 Ballast Magic**

Making a rich garden soil.

**AD55 Glue 'n' Glaze**

Dolls' house windows.

**AD29 Tacky Wax**

Uses of Tacky Wax.



