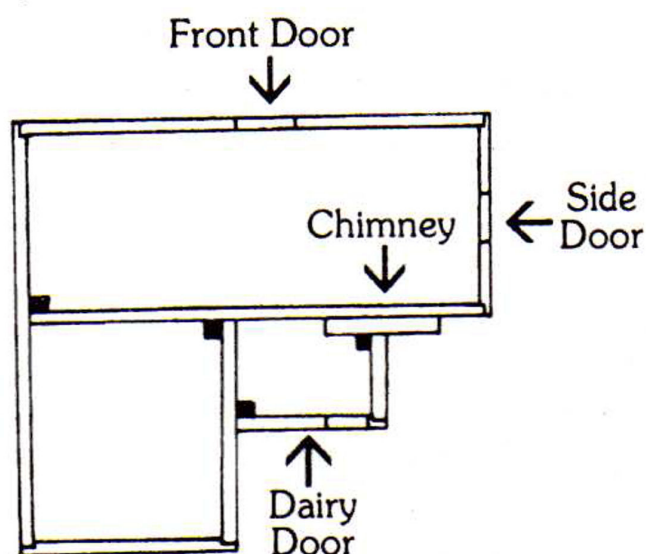


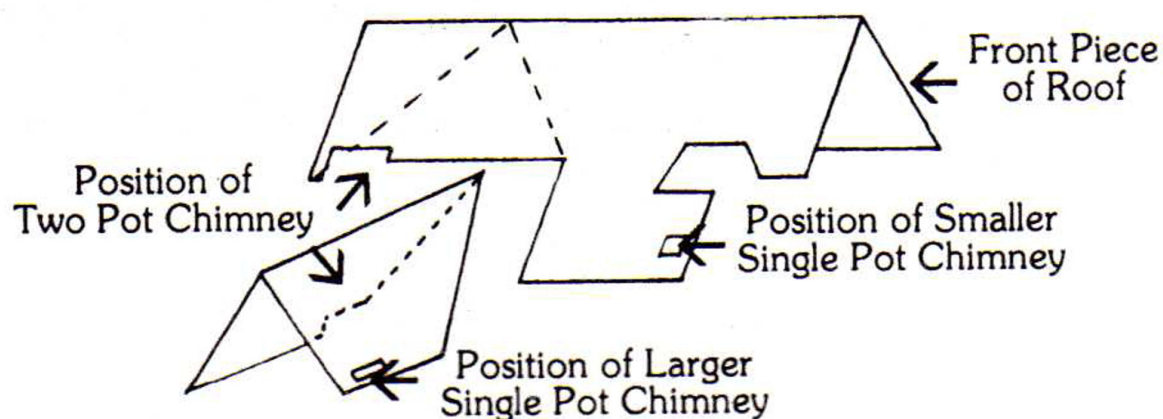
# ASSEMBLY INSTRUCTIONS

1. Glue in all the windows. Pair the chimney pieces and trim the top of the pots to square them off.
2. Attach the large chimney piece to the matching long wall and glue the two pots on the top, (using the locating pip as a guide).
3. Assemble the walls, starting with the front section of the house, then the back and lastly, the dairy.



The black squares on the ground plan show the position of the internal buttresses in relation to the adjoining walls.

4. Add the roof to the building, starting with the largest piece, then the front piece. Fix the two pot chimney before adding the two gable roofs. Finally, add the two smaller chimneys.



All normal polystyrene cements are suitable for assembling this kit.

MADE IN THE UK