

NEW ITEMS ^{Nº 1} 2020



12 DEGREES

Roundhouse

SUMMER FAIR

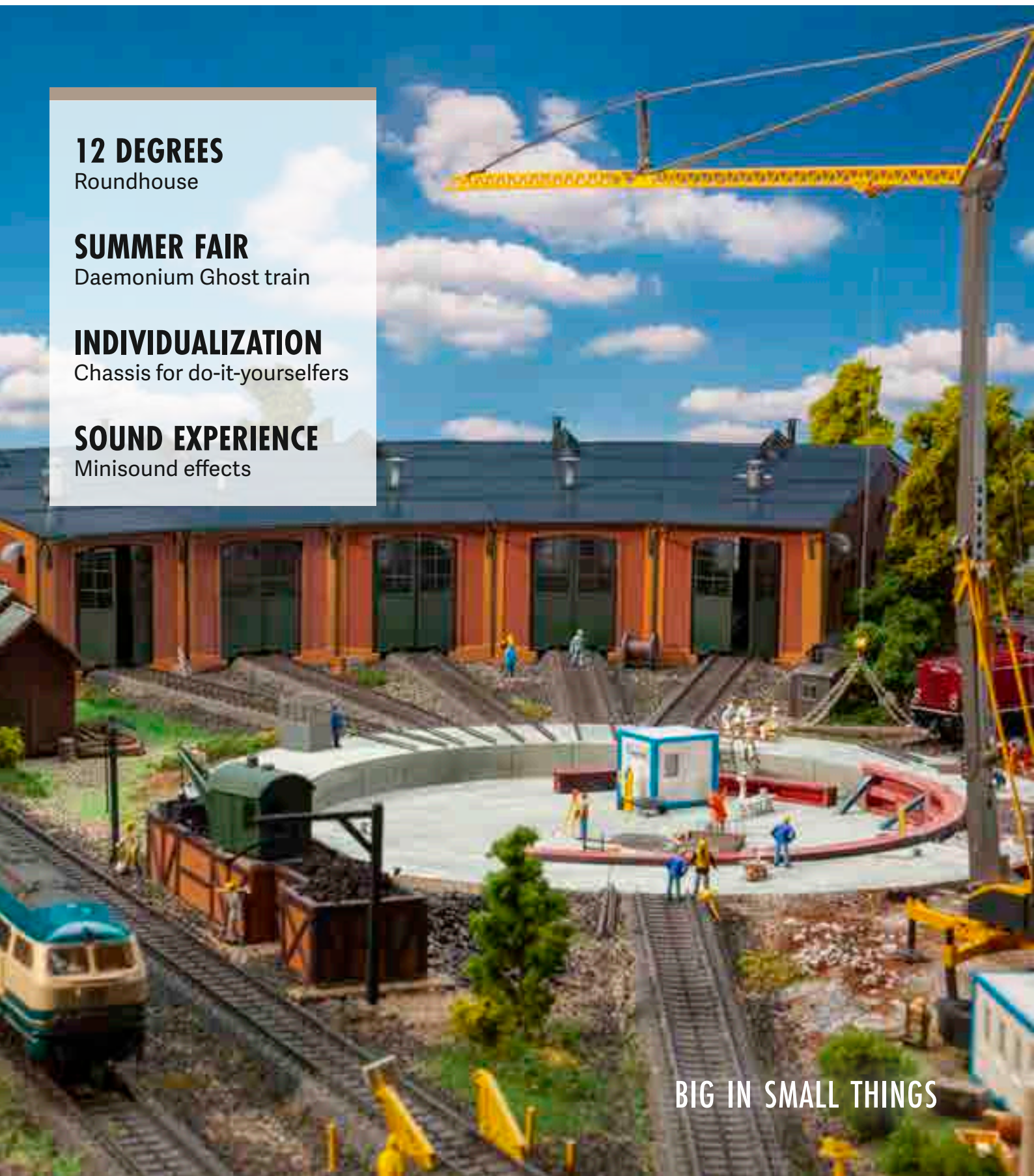
Daemonium Ghost train

INDIVIDUALIZATION

Chassis for do-it-yourselfers

SOUND EXPERIENCE

Minisound effects



BIG IN SMALL THINGS

H0

4

Trade, business, industry	4 – 5, 14 – 15
Railway stations, railway buildings	6 – 13, 22
The town, the village	16 – 19, 22
Colour variants	20
Articles of the month	21
Lasercut-Minis	23
Miniature figures	24
Promotional sets	25



Elevated track with arcade shops

Steer your trains with precision through the density of your urban backdrop.

Pages 10 – 12.

N

26

Railway stations, railway buildings	26
The town, the village	27 – 29
Articles of the month Miniature figures	30

Z

31



Small paradise for horse and rider

The dream of country life is perfectly staged on a country estate with stud and stables.

Pages 18 – 19.



KIRMES

32



CAR SYSTEM

34

Car System Digital	34 – 35
Car System	36 – 37



ANLAGENBAU

38

Water	38
Plants	39
Trees Scatter material	40
Electronics	41
Tools	42 – 43
Modeller plate	44
Small parts in bag	45

Symbolism

Track gauge

H0	1:87 16.5 mm
T	1:120 12 mm

N	1:160 9 mm
Z	1:220 6.5 mm

Periods

Epoch I	1880 – 1920	Epoch IV	1978 – 1985
Epoch II	1921 – 1945	Epoch V	1986 – 2006
Epoch III	1946 – 1977	Epoch VI	2007 – today



140418

DAEMONIUM

Experience the creeps in a fully new dimension, and let you frighten and scare on several levels.

Epoche V • 415 x 220 x 235 mm

June
2020

Trade fair dates 2020

Shall we meet there?

Experience FALLER live: it's possible in Baden, Franconia, Saxony, Westphalia and Württemberg. Anyone who wants to do it in a more international way can also meet us in France, the Netherlands, Italy, Austria or Poland. Anywhere you want, any time you want – we look forward to it!

Intermodellbau

Dortmund, Germany
April 23 – 26, 2020

modell-hobby-spiel

Leipzig, Germany
October 2 – 4, 2020

Faszination Modellbau & IMA

Friedrichshafen, Germany
October 30 – November 1, 2020

You will find further trade fair dates for 2020 at: www.faller.de

Modeltrein Expo On traXS

Utrecht, Netherlands
March 13 – 15, 2020

Hobby Salon

Posen, Poland
November 14 – 15, 2020

Workshops

Let's tackle it together!

Know-how on site: On our premises in Gütenbach we shall show you how thrilling and diversified scale modelling can be. Model layout, Car System or Car System Digital: in our workshops newcomers and advanced modellers will learn from experienced professionals, and will take home useful tips for their project. Just book a place now – and take part!

Car System Digital

May 15 – 16, 2020
September 11 – 12, 2020

Car System Digital vehicle conversion

May 18 – 19, 2020
September 14 – 15, 2020

Car System Basis

June 26 – 28, 2020

Layout Construction

October 16 – 18, 2020
November 27 – 29, 2020

You will find further workshop dates for the year 2020 on the topics Car System, Car System Digital and Model layout construction on: www.faller.de

12 highlights

Monthly models

Model of the month
April

Exclusive special models and authentic re-editions in limited quantity: With its coveted Models of the month FALLER addresses twelve times a year all passionate scale modellers who are in search of the unusual. Here it's worth being fast!

Look for the marked products.

More choice

Colour variants

Colour
variants

Colours transform everything. Our kits differing by the colours demonstrate it in an impressive way. Model variants enlarge the entire collection as surprising alternatives or spectacular complements, while offering appealing good value at the same time.

Look for the marked products.



**SHOP
ONLINE**

www.faller.de
www.car-system-digital.de



FALLER newsletter



Subscribe now!

No longer miss anything! All information on new items, products, trends, and dates – FALLER's Newsletter summarizes all this briefly and succinctly. Whoever hasn't subscribed yet, should best do it right now.

10 years of inspiration

MIKRO
L Ä N D E R

MIKRO LÄNDER

The MIKRO LÄNDER Club, an initiative of the manufacturers BUSCH, FALLER, PREISER and WEINERT, appears with a new logo to mark its 10th anniversary as well as a redesigned MIKRO TICKER Club magazine with a fresh and tidy design. Unchanged are the many advantages, such as a free general catalogue, exclusive special models, entry discounts to trade fairs, events and exhibitions, as well as an online forum. We look forward to seeing you at: www.mikrolaender.de

Advice and repair

We'll adjust it

Always the right contact: no matter whether you have any question regarding the product or need professional maintenance – we shall be pleased to be of assistance by e-mail or on the phone.

E-mail: kundendienst@faller.de

Phone: +49 7723 651-106

Monday: 8.00 – 16.00 hours

Tuesday to Thursday: 8.00 – 12.00 hours

The city belongs to me!

Wir Modellbahner

Here at »Wir Modellbahner«, we warmly invite you to discover the best in the areas of model railways/model building, and to join our active community. You can now find news, stories, advice and information, communities and manufacturers related to the hobby of model railways on wirmodellbahner.de, the combined website of DVSI-Fachgruppe Modellbahn, the model railways section of the German Toy Association, and at [instagram.com/wirmodellbahner](https://www.instagram.com/wirmodellbahner)



Faller Classics

REAL COLLECTIBLES – REISSUED!

109924

B-924 Old-town block

Collector highlight! Variations are possible." Comprehensive set of buildings with town wall allowing to create a diversified old-town scene in a tight space. First launch: 1965.



Epoch II - 310 x 130 x 174 mm - 08/20



120291

Container bridge-crane »GVZ Hafen Nürnberg«

Intermodal. Blue bridge-crane model for the handling of containers between the carriers rail, road and sea, similar to the original operated by DSD

HILGERS Stahlbau GmbH in goods traffic centre GVZ in the Bavarian port of Nuremberg.

Epoch IV - 420 x 347 x 263 mm - 06/20



150943

At the container terminal





5

180290

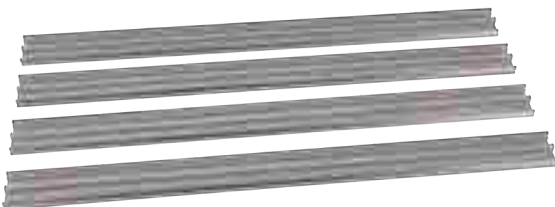
Drive kit for container bridge-crane

Control models »Container bridge-crane«, Art. 120290 and »Container bridge-crane GVZ Hafen Nürnberg«, Art. 120291, without software installation, that is exclusively browser-based from any WLAN capable desktop computer or notebook (device not supplied).

Functions available: motion chassis forward/backward, motion travelling crab to the left/to the right, motion spreader up/down. Mobile elements can be stopped in any position.

For further functions: three additional free control outputs are provided, which can be used for switching or moving applications.

Products supplied: 4 motors, 2 motor regulating units, gears, toothed wheels, shafts, ball bearings, screws, stranded wires. Required Li-ion rechargeable batteries 3.7 V available separately.



180291

Track extension for Container bridge-crane

Supplementary set to prolong the running rails and toothed racks of models »Container bridge-crane«, Art. 120290 and »Container bridge-crane GVZ Hafen Nürnberg«, Art. 120291. Contains: four rail profiles of 300 mm, four toothed racks, and a decoration sheet for the control unit of the bridge-crane drive on the running rails.

Epoch IV • Rail length: 600 mm • 02/20

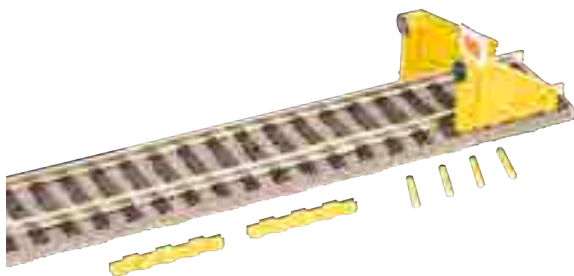
120282

Supplementary set for Roundhouse with 12° track angle

For the large engine shed. Two-stall extension element without lateral walls for »Roundhouse with 12° track angle«, Art. 120281. Each stall is fitted with three windows in the back wall, vent, skylight and chimney cope. Driving parts and articulated wire for the gates to be moved through a servo are included (Servo, Art. 180726 available separately). Shed for engines with a length over buffers of 290 mm. Clearance of gates/lower edge of the track line: 72 mm. Model suitable for all common track systems.

For a half-circle roundhouse you need: 1 x Art. 120281, 6 x Art. 120282.

Epoch III • 330 x 385 x 130 mm • 05/20



120321

2 Tilting bumpers

Track end. Two yellow braking bumpers which are fastened on braking tracks placed parallel to the running rails and deactivated by tilting them manually. Model without function.

Epoch V • 26 x 30 x 18 mm (2 x) • 04/20



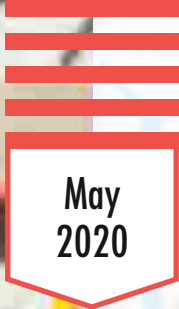
120322

2 Bumpers with shearing brakes

To protect track ends permanently. Two stationary, firmly anchored steel bumpers with shearing brakes as complementary braking elements prevent the waggons from breaking away at track ends. Model without function.

Epoch III • 127 x 24 x 23 mm (2 x) • 04/20





120281

Roundhouse with 12° track angle

To shed your engines. Three-stall extensible roundhouse apt to be linked to turntables with an angle of outgoing tracks of 12°. Supporting steel structure and exposed masonry of that brick house are of contrasting colours. Lateral walls each feature seven windows, while each stall is fitted with three windows in the back wall, vent, skylight and chimney cope. Driving parts and articulated wire for the gates to be moved through a servo are included (Servo, Art. 180726 available separately). Shed for engines with a length over buffers of 290 mm. Clearance of gates/lower edge of the track line: 72 mm. Model suitable for all common track systems.

Extensible with »Supplementary set for Roundhouse with 12° track angle«, Art. 120282. For a half-circle roundhouse you need: 1 x Art. 120281, 6 x Art. 120282.

Epoch III - 485 x 390 x 130 mm - 05/20



110140

»Königsfeld« Station

Limited edition model of a three-aisle passenger building. The central section and angle buildings of that sandstone construction of late classicism form a H-shaped ground plan. Decoration includes a glass roofing for the platform.

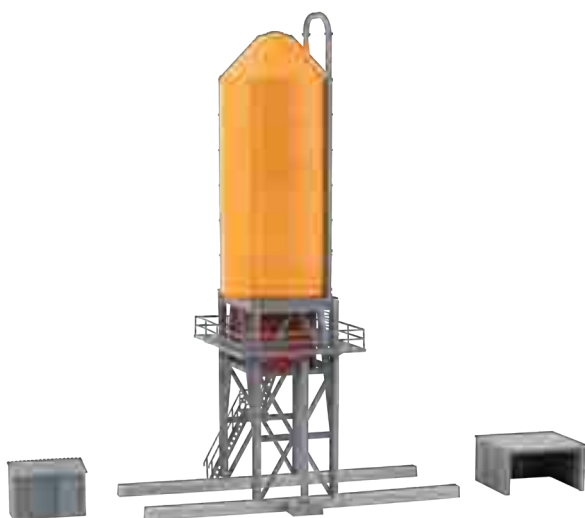
Epoch I - 500 x 280 x 190 mm - 03/20

**120286**

Coaling station

For your small engine shed. Coaling station with half-timbered coal bunkers, swivelling crane cabin with barrel roof, minecart, water spout and loading gauge. Bulk coal is provided for decoration.

Epoch II • 180 x 54 x 66 mm • 02/20

**120283**

Gravel loading facility

Loading facility with circular silo, gravel bunker, pipe system and a practicable platform to load trucks and waggons. A metal shanty and an open shelter are provided for the decoration of the scene. Model without function.

Epoch III • 167 x 94 x 246 mm, Metal shanty: 37 x 19 x 26,5 mm, Shelter: 46 x 42 x 25 mm • 04/20

110204

»Pusemuckel« Wayside station

Small halt with brick masonry, lean-to roof, and a covered waiting area with platform barrier.

Epoch II • 121 x 78 x 49 mm • 03/20



10



120573

Arcades with track bed

Two track line segment of elevated railway with reddish exposed brick facade and three viaduct arches closed with masonry. Suitable for all track systems.

Epoch I • 358 x 128 x 97 mm • 05/20





120571

Arcades with shops and interior equipment

Similar to the original city railway arches of the 19th century in Berlin and Vienna. Two track line segment of elevated railway with reddish exposed brick facade and three large-glazing arcades used as commercial premises by tradespeople.

A comprehensive set of accessories is provided to furnish a greengrocer's shop, a coffee house and an antiques shop accommodated under the vaults. Line segment suitable for all track systems.

Epoch III • 358 x 138 x 97 mm • 06/20

150953

Passers-by with umbrella

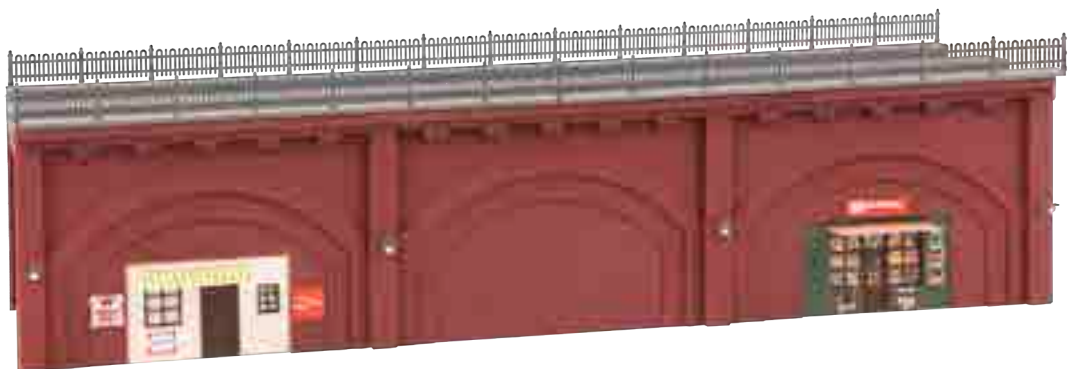


120572

Arcades with shops

Two track line segment of elevated railway with reddish exposed brick facade and three viaduct arches partly used as commercial premises by tradespeople. Line segment suitable for all track systems.

Epoch I • 358 x 138 x 97 mm • 05/20





120580

Urban-railway station

Elevated position! Two-track urban-railway station placed on three viaduct arches with lateral flights of stairs, decorative pillars, copings, and cast iron railings as well as a glazed barrel roof. The brick vaults are partly used as commercial premises by tradespeople. Information panels and advertising posters among other things are provided for decoration. Model can be prolonged by juxtaposition. Track bed suitable for all track systems.

Epoch I • 360 x 200 x 198 mm • 05/20

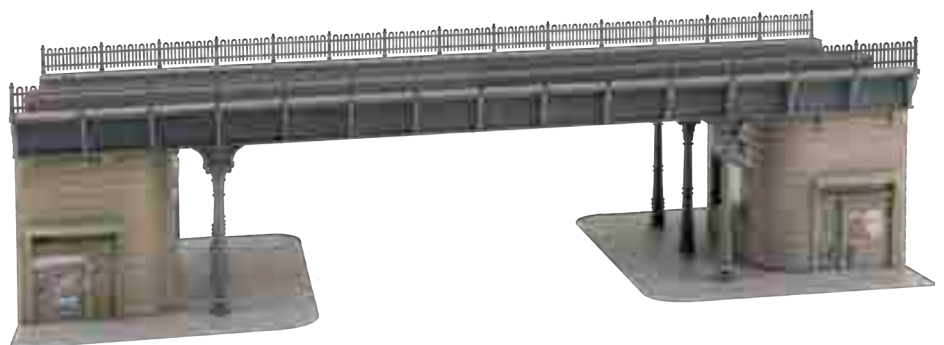


120581

Urban-railway bridge

Two-track urban-railway bridge with decorative pillars, copings, cast iron railings, and two kiosks in the abutments. Plates with pavement pattern provided.

Epoch I • 360 x 160 x 100 mm • 05/20





13

110144

»Ardez« Station

Narrow-gauge station with solid stone walls and deep door and window recesses in the style of Engadine houses, similar to the original erected in 1913 in the Swiss canton of Grisons. A large loading area in the front extends the ground plan.

Epoch III • Patinated model • 400 x 148 x 115 mm • 07/20



120267

Transformer substation »Ardez«

Electrification of the Rhaetian Railway lines. Masonry distribution tower with embedded insulators and a double-pitch roof, similar to an original built about 1913 in Ardez in Low Engadine. Ideal complement to »Ardez« Station, Art. 110144.

Epoch III • Patinated model •
80 x 80 x 136 mm • 06/20



130891

Insurance building

Scale modelling with system. Three-storey office building of modular construction typical of Goldbeck, with horizontal coffered facade made of white-grey-blue metal, generously glazed entrance areas and strips of windows allowing to catch a glimpse of office life inside. All parts can be arranged at will and complemented with other compatible elements of the FALLER Goldbeck series. The kit is made from a mixture of materials plastic and wood/special cardboard.

Epoch VI • 302 x 165 x 125 mm • 07/20



130625

Gatekeeper lodge

Gatekeeper lodge/cashier booth with profiled-sheet metal walls, concrete plinth and outside stairs. A boom gate and an entry ticket machine are provided for the decoration of the scene. The kit is made from a mixture of materials plastic and wood/special cardboard.

Epoch V • 94 x 60 x 41 mm • 03/20



130626

Gatekeeper lodge with overhanging roof

Gatekeeper lodge/cashier booth with profiled-sheet metal walls, overhanging roof all around, and outside stairs. A boom gate and an entry ticket machine are provided for the decoration of the scene. The kit is made from a mixture of materials plastic and wood/special cardboard.

Epoch V • 94 x 63 x 46 mm • 03/20



130159

Modern fire station

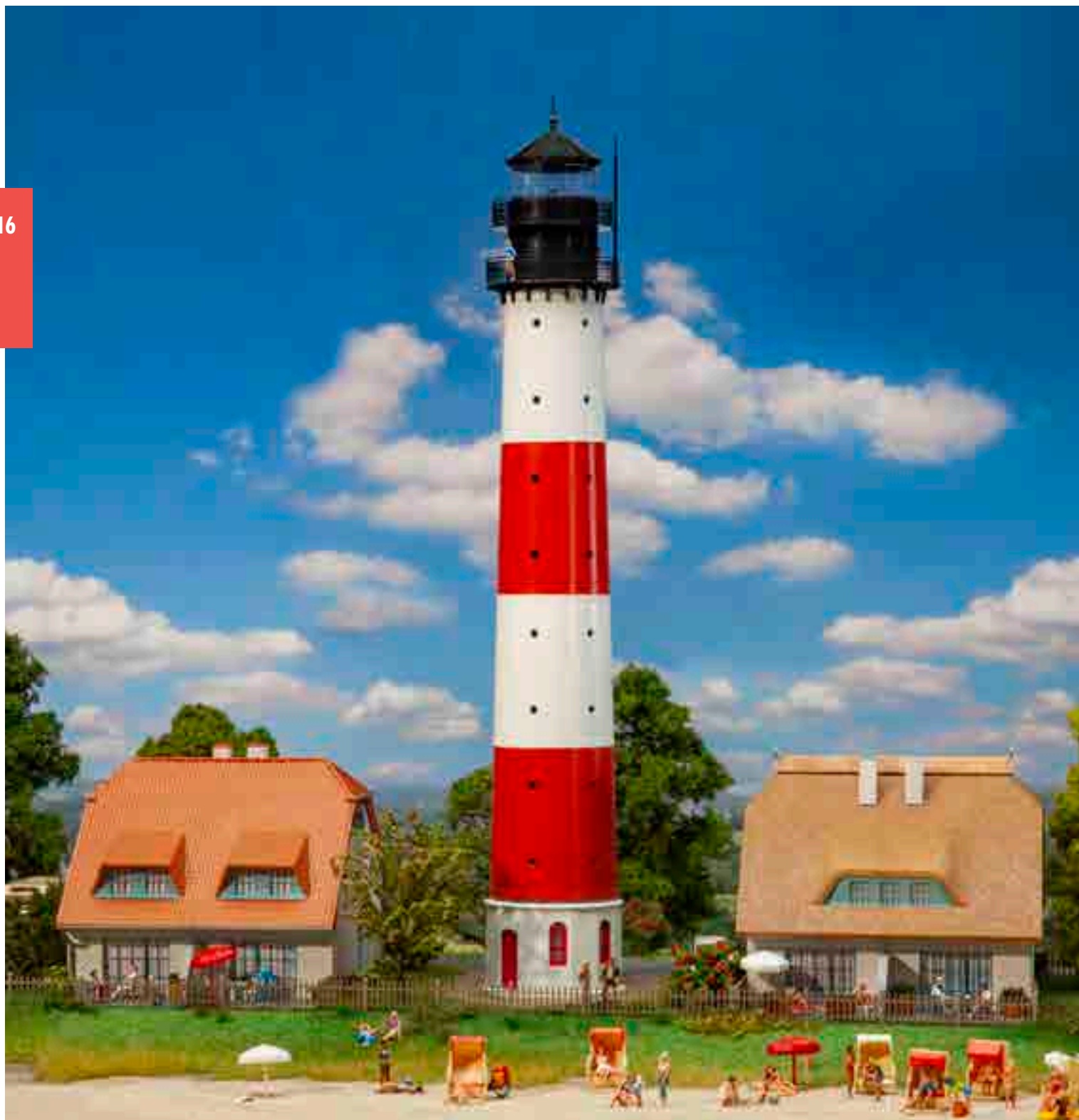
Fire brigade complex composed of three compact buildings erected from white bricks and red exposed concrete, all with flat rooftops. The oblong cube accommodates the vehicle hall featuring glass gates giving access to the three stalls without through traffic. The radio control station with rooms for guard unit, storage and workshops is designed as a two-storey, nearly square cube. Visible from a great distance, an emblem for the presence of the fire brigade is the high tower fitted with lettering and aerial system.

Epoch IV - Vehicle hall: 216 x 225 x 69 mm, Barracks: 114 x 114 x 131 mm, Hose tower: 56 x 56 x 389 mm - 03/20

150928

Modern firemen





130670

»Westerheversand« Lighthouse

Landmark in the North. Reproduction of »Westerheversand« lighthouse put into operation in 1908 on Eiderstedt peninsula in Sleswick-Holstein. That red-white-ringed Watt giant that extends over nine storeys inside is considered to be the most well-known lighthouse in Germany. Model is fitted with a sea-orientation fire (flashing fire) shining at regular intervals. Connection to 12-16 V, direct voltage.

Epoch III • 69 x 65 x 406 mm • 05/20



130671

Lighthouse keeper house

One-storey dwelling house from North Germany with light-coloured clinker facade, blue windows, annexed winter gardens, very low roof covered with tiles and slightly hipped on the narrow sides, and three large dormer windows. Lattice fencing is provided to delimit the plot of land.

Epoch III • 160 x 125 x 110 mm • 05/20

130675

Reeds-thatch roof

One-storey dwelling house from North Germany with light-coloured clinker facade, blue windows, annexed winter gardens, very low reeds-thatch roof slightly hipped on the narrow sides, reeds-thatch ridge, three large dormer windows, and crossed horse heads as gable ornaments. Lattice fencing is provided to delimit the plot of land.

Epoch III • 160 x 125 x 112 mm • 05/20



130652 🎨

Sanatorium

Wellness! Small, representative specialized clinic located in a building with tower fore part, covered entrance areas and roadway facades with elaborate decoration from 1900's turn of the century. Ground floor and exterior stairs are masonry, the upper storey is half-timbered and the attic features wood lining.

Epoch III • 280 x 250 x 235 mm • 03/20

130542

Stud farm

Rural stud farm composed of a two-storey main house with double-pitch roof, dormer windows and a large farm barn with half-timbered first floor. Brick masonry applied through digital printing with ornamental anchors, and the green gates and shutters make the two buildings a harmonious ensemble.

Epoch II • Main house: 146 x 103 x 145 mm, Farm barn: 134 x 116 x 118 mm • 04/20



153027

Riders



19

130546

Stable

For farm and stud farm. Spacious stable with double-pitch roof, large sliding gates on both fronts and four loosebox doors on each of the other sides. Both gates can be made to open and close by mounting the Gate motor unit, Art. 180624 (not supplied). Model suitable for the passage of Car System vehicles. Matching addition to »Stud Farm«, Art. 130542. Silo and manure heap not supplied.

Epoch V • Patinated model • 265 x 147 x 95 mm • 02/20



180416

Paddock fence, white

Epoch IV • Total length of fence: 1341 mm • 04/20



180298

Hen-house

Epoch IV • Lasercut model • 34 x 30 x 23 mm • 04/20

130579 

Agricultural machine workshop

First-class service! Specialized workshop for tractors and agricultural machines located in a brick construction with staggered building elements, large canopy and a gate allowing to catch a glimpse of the interior. In the outdoor area an independent roofing offers parking space and shelter. A workbench, routing machine and anvil serve as modest equipment.

Epoch III - 200 x 160 x 88 mm - 04/20

130676 

Chalet

A quiet tip with panorama! Light-coloured rendered detached house with garage, outside stairs and noticeable overhang on the attic floor featuring plank siding. Lozenged shingles cover two sides of the house on the upper storey as well as the roof.

Epoch III - 120 x 109 x 101 mm - 03/20

130572 

Forest superintendent's office

Rural, two-storey forest superintendent's office with half-timbered first floor, dormer windows and third gable. An adjoining tool shed, a wooden balcony, the roofed oriel entrance, a kennel, and flower boxes all contribute to the many-sided styling of the model.

Epoch II - 165 x 102 x 118 mm - 02/20

Model of the month
January



191749

2 Grain stores

Epoch I - 69 x 58 x 70 mm (2 x) - 01/20

Model of the month
February



191750

Berg-country house

Epoch I - 163 x 117 x 122 mm - 02/20

Model of the month
March



191751

Alpine Hammersmith's shop

Epoch I - 310 x 115 x 100 mm - 03/20

Model of the month
April

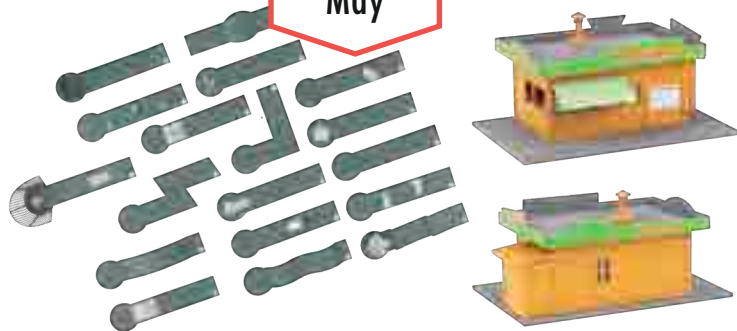


191752

Windmill »De Kat«

Epoch I - 255 x 180 x 330 mm - 04/20

Model of the month
May

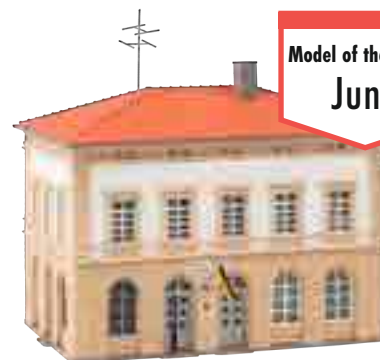


191753

Miniature golf course

Epoch IV - Kiosk: 110 x 41 x 55 mm - 05/20

Model of the month
June



191754

Central police station

Epoch III - 191 x 155 x 190 mm - 06/20



130660

Swedish village shop

Traditional, one-storey Swedish house with board cladding made of vertical panels painted in showy blue and sash bar windows of contrasting white. A third gable and a dormer window with lettering embellish the long sides of the small shop offering regional delights. A ground plate with concrete plinth is part of the kit.

Epoch II • 200 x 115 x 100 mm • 02/20



110160

Swedish railway station

Traditional, one-storey station building in Scandinavian wooden-house style, painted in popular Swedish red, with dark grey roof and white sash bar windows. A third gable and a dormer window with lettering embellish the long sides of that rural station. A ground plate with concrete plinth is part of the kit.

Epoch II • 200 x 115 x 100 mm • 02/20



180299

Dovecote

Lasercut model of an octagonal dovecote featuring a conical roof and arched exit holes with alighting boards.

Epoch I • Lasercut model • 16 x 16 x 29 mm • 04/20



180300

Dustbin booth with container

Lasercut model of a refuse container shed with flat roof, to be used as an adjoining extension or independent shelter, at choice.

Epoch V • Lasercut model • 40 x 25 x 25 mm • 04/20



180301

Small wooden bridge

Lasercut model of an arched wooden bridge intended for a pond or garden.

Epoch I • Lasercut model • 74 x 20 x 19 mm • 04/20



180302

Decorative fountain

Central element of a garden or village square! Lasercut model of a masonry decorative fountain with roofing and water pump. Model without function.

Epoch III • Lasercut model • 23 x 21 x 24 mm • 05/20



180303

Shepherd carriage

Lasercut model of a shepherd carriage with red shutters, two wooden wheels and drawgear.

Epoch I • Lasercut model • 49 x 24 x 32 mm • 05/20



180304

4 Picnic benches

Time for a pause! Set of four picnic tables manufactured by the lasercut process and fitted with benches.

Epoch IV • Lasercut model • 26 x 16 x 10 mm (4 x) • 05/20



150951

Workers in engine depot



150952

Grape harvest



150950

At the boarding school



150954

Medical-laboratory assistants



150949

Telekom technicians

02/20



150956

Visitors to a Christmas fair

02/20



150957

Kindergarden excursion

02/20



150958

School children with lady teacher

02/20



25

190160

Promotional Set »Farmhouse life«

Outing in the country! Traditional integrated house combining the dwelling rooms and farming areas of a rural way of life under the same roof. The building's exterior is given a fantastic diversity through the different styles of the facades, an extension, a cellar trap door, a small bakehouse as well as a chicken ladder, rabbit hutch and dovecote. A high tower silo, wayside cross, dung-pit as well as agricultural accessories are also provided for decoration.

Epoch III • Farmhouse: 160 x 129 x 104 mm, Silo: 52 x 41,5 x 123 mm



190161

Promotional Set »Balloon flight«

Things are on the move in the sky! Two hot-air balloons featuring curved envelopes, one with blue-and-white stripes, the other with red-green-yellow stripes, baskets made of woven osier, and burners. Can be retrofitted with the »Mini lighting effects flickering fire«, Art. 180695.

Epoch IV • Ø 170 x 228 mm (2 x)



Promotional sets

FALLER quality – particularly affordable! The FALLER promotional sets for gauges H0 and N are model compositions tailored to special themes in a one-off, limited edition – and all for a bargain price. Whether railway, industry, town or country, there's something for every layout theme.



212122

»Ochsenhausen« Station

Two-storey station building with coarse rendering on the facade, cornice on the first floor, and wood siding in the upper storey forming the attic. A goods shed with loading platform all around and bicycle shelter complement the station as adjoining extensions.

Epoch III - 165 x 78 x 78 mm - 03/20



222109

»Zweckel« Signal tower

Lasercut model of the signal tower put into operation in 1911 and classified today as a historical monument, at branching-off point »Zweckel« in Gladbeck, North Rhine-Westphalia. Towards the upper storey clad with slate slabs, that rectangular clinker construction is narrowed through sharply chamfered angles.

Epoch III - Lasercut model - 67 x 32 x 42 mm - 05/20



27

232337

Lidl Supermarket

Welcome to Lidl! Branch of the German discounter based in Neckarsulm, with delivery zone on one side, double-pitch roof and metal cladding on gables. Decoration accessories typical of that supermarket are provided, such as advertising panels and a gathering point with shopping carriages.

Epoch V • 125 x 185 x 55 mm • 08/20



232326

Dwelling house in fire

Four-storey old-town apartment building with smoke-blackened stucco facade and partly burnt-out roof framing. To obtain a realistic fire scene with dense smoke and blazing fire model can be fitted with the »Smoke generator set«, Art. 180690 and the minilights »Flickering flames«, Art. 180695. (Art. 180690 and 180695 not provided.)

Epoch II • 92 x 93 x 137 mm • 03/20



232324

Town house set »50s«

4-piece set of buildings allowing to build a row of houses from the 1950s, comprised of two four-storey town houses with ornamented stucco facades and shops, a two-storey dwelling house with passage to the backyard as well as a house under demolition with rubble. Models can be built independently and arranged in a variety of ways.

Epoch III • Town house under demolition: 152 x 82 x 114 mm, Bakery: 93 x 93 x 140 mm, Drugstore: 93 x 93 x 147 mm, Townhouse: 93 x 88 x 101 mm • 04/20



232384

Apartment buildings with pharmacy and delicatessen shop

Two four-storey apartment buildings with historical stucco facades and shop fronts on the ground floor. One of the buildings is embellished with iron balconies and roof fences.

Epoch II • Townhouse 1: 92 x 98 x 130 mm, Townhouse 2: 92 x 88 x 138 mm • 07/20



232379

Apartment buildings with electrical shop

Two four-storey apartment buildings with historical stucco facades. The building with shop front is embellished with roof fences and iron balconies. Fire walls on the sides allow the arrangement within a row of houses in a variety of ways.

Epoch II • Townhouse 1: 92 x 98 x 130 mm, Townhouse 2: 92 x 88 x 138 mm • 07/20



29

232395

Black Forest farm with straw roof

The noblest elements in the region. Large Black Forest farm with timber framework, masonry basement, access to the upper floor, and a straw and shingle roof. For personalized styling of the exterior, kit includes fences, wheelbarrows, a dunghill, and many other decoration parts.

Epoch I • 148 x 153 x 90 mm • 06/20



232349

Forest superintendent's office

Rural, two-storey forest superintendent's office with half-timbered first floor, dormer windows and third gable. An adjoining tool shed, a wooden balcony, a kennel, and flower boxes all contribute to the many-sided styling of the model.

Epoch II • 77 x 57 x 80 mm • 03/20



231701

Central police station

Epoch II • 103 x 70 x 80 mm • 03/20



231705

Prefabricated house under construction

Epoch II • Scaffold: 50 x 8 x 70 mm, House: 48 x 36 x 54 mm • 06/20



155361

THW personnel

02/20



155362

On the farm

02/20



155363

Stable personnel, riders

02/20



155364

Loving pairs

02/20



155365

Workers in engine depot

02/20



155366

Kindergarden excursion

01/20



282709

»Ochsenhausen« Station

Two-storey station building with coarse rendering on the facade, cornice on the first floor, and wood siding in the upper storey forming the attic. A goods shed with loading platform all around and bicycle shelter complement the station as adjoining extensions.

Epoch IV • 119 x 56 x 60 mm • 05/20

31



282795

»Kandelhof« Cinema

Projection! Lasercut model of a large urban apartment building with four storeys and hipped roof, inspired by an original located in Freiburg, the art house cinema »Kandelhof-Lichtspiele« which opened in 1948 and fills the plinth floor. Letterings and advertising panels to style the entrance area are supplied with the kit.

Epoch III • Lasercut model • 152 x 58 x 96 mm • 02/20



282778

»St. Johann Baptist« Church

Lasercut model of an aisleless church with apse, double pitch roof, and adjacent lateral slender spire tower inspired by an original located in Thalkirchdorf, a village in the March of Oberstaufen.

Epoch III • Lasercut model • 138 x 73 x 141 mm • 02/20



140418

»Daemonium« Ghost train

Horror spectacle in XXL format. Digitally printed functioning model of a large, travelling ghost train with three riding levels designed according to the original »Daemonium« of showman Martin Blume, an attraction built by »Mack« company.

The single-track ride carries passengers in cage-like gondolas through a strange torture chamber of the Inquisition period. The decoration paintings of the castle-like facade (»Art Studio Bernhardt«), animated logotype, and fanciful figures in the outdoor area all show elaborate horror scenarios. 4 motors included. Gondolas do not swivel.

Epoch V • Movable model • incl. motor • 415 x 220 x 235 mm • 06/20



33



190070

Promotional Set »Small funfair«

Low-cost start into the world of funfairs! Funfair set comprised of a children roundabout with various vehicles, animals and figures, an inflatable bouncy castle, a sweet booth, a shooting gallery, a toilet carriage, and barrier fences. The roundabout can be driven by the synchronous hobby motor, Art. 180629 (not supplied). Contents: Children's Merry-go-round, Midway booths, Bouncy castle, Toilet car

Epoch IV • Movable model •

Children's merry-go-round: Ø 125 x 115 mm,
Shooting gallery: 96 x 32 x 67 mm, Candy booth: 96 x 32 x 77 mm,
Bouncy castle: 84 x 76 x 63 mm, Toilet wagon: 90 x 43 x 53 mm

PERFECTION, PRECISION, PASSION

Car System Digital vehicles can be personalized down to the smallest details and set new standards through their faithful reproduction of the real originals. Combined with the »Car System Digital« software they meet the most stringent requirements regarding their driving characteristics and functions – It will be guaranteed ecstasy and definitely the distinguishing mark of your model layout.



161315

Car System Digital 3.0 MB Atego Lorry »FedEx«

Epoch V • 04/20



161316

Car System Digital 3.0 MB Atego Lorry »Dachser«

Epoch V • 04/20



161360

Car System Digital, Single satellite, small

Compact! Car System Digital satellite with small enclosure, ideal even under confined space conditions, such as e.g. in shadow areas that are not accessible on your installation.

183 x 23 x 20 mm • 03/20



190847 190847GB (HO, N)

Pro Tips »Car System«

Planning, Design, Technique – The indispensable reference and learning book for fascinating miniature road traffic.

The comprehensive manual »Pro Tips Car System« contains all fundamentals as well as detailed expert know-how relating to the topics Vehicles, Road building and Traffic control. Learn step by step the essential working techniques leading to the successful operation of Car System, and immediately implement your own ideas and projects.



CAR SYSTEM DIGITAL APP (IOS AND ANDROID)

Driving pleasure by touchscreen. With the Car System Digital app, you can control all your digital vehicles and all traffic scenarios previously set up in the software. Installation and use of the app is included in the Car System Digital licence type »Premium«.



161345

Small expansion module

Controllable with the Car System Digital software! Compact, radio-based expansion module with five outputs (e.g. for points and other switched elements), as well as one input. Ideal for controlling turn-off or stop manoeuvres in connection with a correspondingly desired signal image. The connection is made to 16 V AC.

06/20



161354

Car System Digital Master

Upgrade: »Car System Digital Master« from now on with DCC output, too. The »Car System Digital Master« also allows from now on to address the most varied DCC compatible devices, such as e.g. servo, points or signal decoders. To use the new functionality simply assign in the Car System Digital software a digital address you have previously programmed in your DCC compatible device. Radio basic unit! The »Car System Digital Master« permits communication between all required components and controls all functions.

04/20



EXPERIENCE CAR SYSTEM DIGITAL

Experience all the features and advantages of »Car System Digital« live on site. Our selected specialist retailers will be pleased to advise you. You can find all addresses and products at www.car-system-digital.de. Naturally, we will also show your "Car System Digital" at all of the public trade fairs we'll be attending in 2020.

CAR SYSTEM START SETS

With the countless possibilities that FALLER Car System has to offer it is best to select one of the numerous starting sets to begin with. There are a number of starting sets available for a quick start into the Car System world, which differ almost only by the vehicle.



161487

Car System Start-Set »MB SK Lorry Emons«

Package contents:

- Lorry MB SK »Emons« (HERPA)
- Storage battery charger
- Special guide wire 10 m
- Roadway knifing filler, Roadway paint
- Roadway markings
- Crash barriers, Barrier stakes
- Detailed assembly instructions

Epoch V - 03/20



161488

Car System Start-Set »MB Atego Lorry FedEx«

Package contents:

- Lorry MB Atego »FedEx« (HERPA)
- Storage battery charger
- Special guide wire 10 m
- Roadway knifing filler, Roadway paint
- Roadway markings
- Crash barriers, Barrier stakes
- Detailed assembly instructions

Epoch V - 05/20



161489

Car System Start-Set »MB Atego Lorry Dachser«

Package contents:

- Lorry MB Atego »Dachser« (HERPA)
- Storage battery charger
- Special guide wire 10 m
- Roadway knifing filler, Roadway paint
- Roadway markings
- Crash barriers, Barrier stakes
- Detailed assembly instructions

Epoch V - 06/20



161642

Truck MB Atego, white (HERPA)

Epoch V - 01/20



161492

Scania Lorry R 13 HL (HERPA)

Epoch VI - 04/20



161473

Car System Conversion chassis »MB Sprinter«

Pre-assembled, fully functioning Car System H0 chassis to convert Mercedes-Benz Sprinter models of generation I (W 901-905, production period 1995 to 2006) by manufacturer HERPA for Car System operation.

05/20



161474

Car System Conversion chassis »Lorry MB Citaro«

Pre-assembled, fully functioning Car System H0 chassis to convert Mercedes-Benz Citaro City Bus models by manufacturer RIETZE for Car System operation.

07/20



161475

Car System Conversion chassis »Battery bus, Setra S 315«

Pre-assembled, fully functioning Car System H0 chassis to convert Setra S 315 Bus models by manufacturer RIETZE for Car System operation.

05/20



163710

Car System Chassis kit »N-Bus, N-Lorry«

Chassis kit to motorize stationary models of N buses and N trucks for Car System operation. Set contains all vehicle components required for the assembly of a fully functioning two- or three-axle Car System N gauge chassis (bus and truck), except the rechargeable batteries.

01/20



171657

Modelling water, blue-green, 240 ml

Blue-green tinted, single-component modelling water allowing to style realistic water bodies such as rivers, brooks, ponds, lakes or puddles.

Content: 240 ml

05/20



171658

Modelling water, 240 ml

Transparent, single-component modelling water allowing to style realistic water bodies such as rivers, brooks, ponds, lakes or puddles.

Content: 240 ml

05/20



171659

Water effect, 60 ml

Water effect allowing to style water bodies in motion and waterfalls.

Content: 60 ml

05/20

GARDENING MADE EASY!

Colourful plants, ready to use without cutting and gluing. Merely plant and enjoy the view!



181276

Pleasure garden

05/20



181277

Kitchen garden

05/20



181278

Pleasure garden with pond

05/20



181281

26 Roses

05/20



181282

18 Lilies

05/20

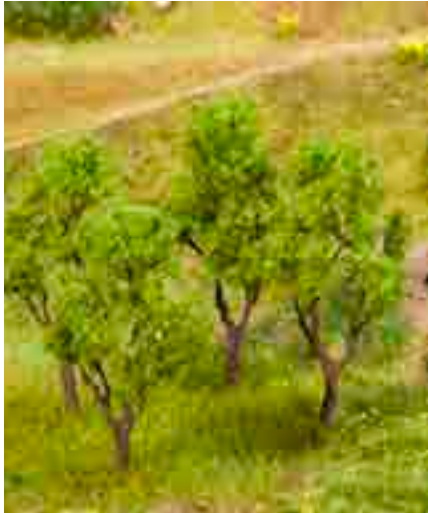


181256

16 Sunflowers

DECIDUOUS TREES

The branching in the tree crowns and the tall growth of deciduous trees animate the lines and areas of your model structures in a distinctive way.



181378 (H0, TT, N)

4 Alders

60 - 70 mm • 05/20



181377 (H0, TT, N)

4 Beeches

60 - 70 mm • 05/20



181379 (H0, TT, N)

4 Trees, assorted

60 - 70 mm • 05/20



170818

Scatter material, Powder, Clay soil, reddish

240 g • 03/20



170819

Scatter material, Powder, Loess soil, umber

240 g • 03/20



170820

Scatter material, Powder, Clay soil, ochre

240 g • 03/20



170821

Scatter material Sand soil

Grain size: 0 – 0,2 mm • 240 g • 03/20



180662

Light festoon with 52 LEDs

Extremely realistic! A string of lights densely fitted with 52 white LEDs and made from PCB tape, particularly suitable for the lighting of model trees, for example. The connection is made to 16 V AC/DC.

03/20

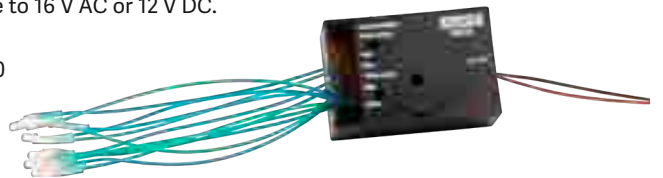


180678

LED Building lighting

The program provided simulates a lived-in house by changing the lighting in the rooms, hallway or staircase. Two speeds of light change can be selected. Can be switched with the »relay module«, Art. 161659 or any commercially available switch. The connection is made to 16 V AC or 12 V DC.

03/20



Distribution plate

Clear wiring! Low-voltage distribution plate with 2 x 10 sockets, incl. plugs, 2.5 mm. Identification colour as recommended by NEM.

04/20



180801

Distribution plate, red

180802

Distribution plate, yellow

180803

Distribution plate, blue

180804

Distribution plate, green

180805

Distribution plate, black

180806

30 Connectors for distribution plate

Set of 30 with coloured, 5 mm plugs, suitable for FALLER distribution plates, Art. 180686 and Art. 180801 – 180806. Identification colours as recommended by NEM.

04/20



Minisound effects

When energised, the sound backdrop produces a single. Can be switched with the »relay module«, Art. 161659 or any commercially available switch. The connection is made to 16 V AC or 12 V DC. Duration of the mini sound effect ranges from 5 to 25 seconds, depending on the product.

05/20

180250

»Barking dogs«

180251

»Animals on the farm«

180252

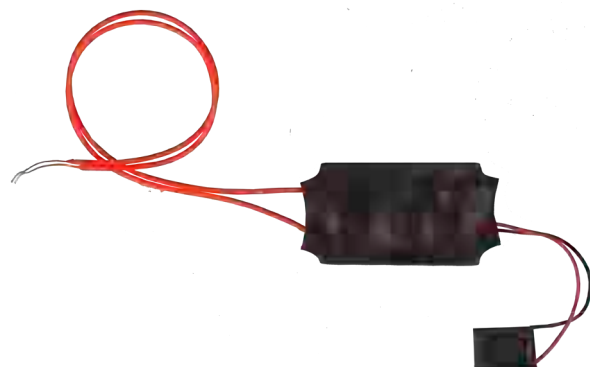
»Birds' twittering«

180253

»Siren«

180254

»Platform chime«



TOOLS

Small helpers in any situation. No matter whether you want to cut, drill or glue. Various aids make work on models easier.



170537

3-in-1 Device, battery-powered, for modellers

Polyvalent tool with interchangeable bits for cordless soldering, hot cutting and heat shrinking. With LED lighting. Contains 4 bits: Soldering bit, 12 W. Foam shaper, pin bit, 1.2 mm. Foam cutter, blade bit, 5 mm. Bit for heat shrinking, 16 W. USB charging cable for rechargeable battery supplied. Li-Ion battery 3.7 V, 2400 mAh.

06/20



170535

LED Magnifier lamp with stand

LED Hand-held magnifier with built-in stand, strength 5 x, two brightness levels and USB charging function. Lens diameter: 75 mm. Lithium rechargeable battery 3.7 V, 300 mAh.

06/20



170536

3D Printing retouching set

For the most diverse 3D printing methods! Tool set for the post-processing of 3D printed parts in model building, consisting of a hand vice, a knife with sharp replacement blades, a blunt modelling spatula as well as one round and one flat file. With handy tool case.

06/20



172161

Replacement paintbrush tips

Set of 4 shape-retaining synthetic replacement paintbrush tips, 2 x 7 mm and 2 x 9 mm, for »Detail paintbrush with interchangeable tip«, Art. 172160.

06/20

172160

Detail paintbrush with interchangeable tip

Fine detail paintbrush with interchangeable, shape-retaining synthetic tips, 7 mm and 9 mm.

06/20



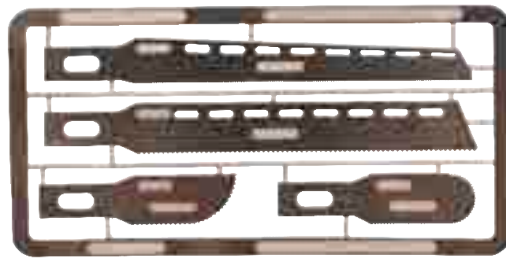


170533

Flexible masking adhesive tape, 2 mm and 3 mm wide

Twin pack, elastic adhesive tape, 2 mm wide x 18 m and 3 mm wide x 18 m, covers curved lines and surfaces accurately and wrinkle-free. No paint smeared. Removable without leaving any residue.

06/20



170539

Set of saw blades for modeller's knife

Set of 4 finely serrated miniblades, 0.24 mm, allowing to accurately saw plastic and etched-metal pieces. Matches »Modeller's knife with 20 blades, soft grip«, Art. 170540.

06/20

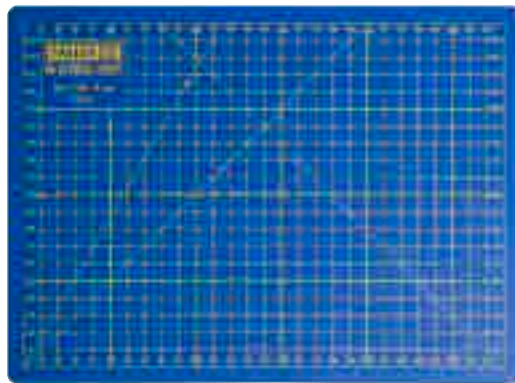


170548

Precision modeller's knife

Precision modeller's knife with aluminium grip, long-lasting SK5 steel blades and plastic protecting cap.

06/20



170524

Cutting mat

Clever working pad! Protects the surface of tables and simultaneously avoids affecting the sharpness of your modeller's knife. That high-quality long-lasting mat is provided with an horizontal and vertical grid in cm and the printed FALLER logo. The sandwich structure of the material closes by itself after cuts. Format: 300 x 220 x 3 mm (A4).



170540

Modeller's knife with 20 blades, soft grip

Aluminium! Makes any cutting and sawing work easier in the hobby and scale modelling sector for paper, cardboard, plastic, wood and sheeting. The soft grip is superhandy, even in the long run, while ensuring additional safety when seizing it. The reinforced grip also allows minor sawing work. A magnet at the tip of the knife makes it easy to pick up blades or tiny metal pieces. The turning fastener allows to replace the different blades easily and rapidly. Includes 4 types of scalpel and saw blades. Including a box for safe storage.

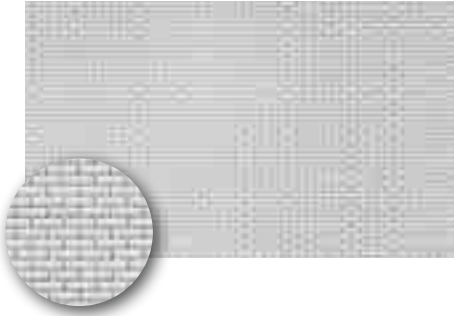
170688

Special side cutter

For cutting off ultra-fine moulded parts without burrs. Only suitable for polystyrene and copper wires.


**TOP
SELLER**

43

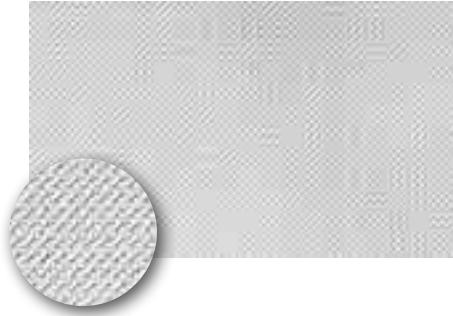


180735

»Brick« Modeller plate

Kitbashing and entirely own constructions. Large modeller plate manufactured using the injection moulding process, with brick pattern surface, of versatile use to creatively modify or enlarge your kits.

319 x 200 mm • 03/20

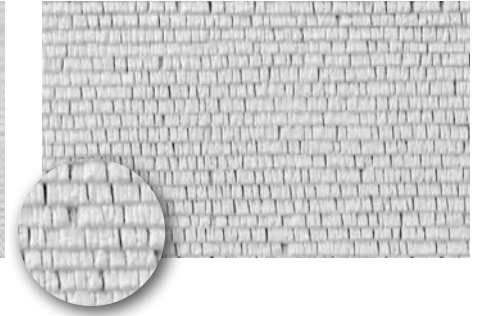


180736

»Diamond pattern« Modeller plate

Kitbashing and entirely own constructions. Large modeller plate manufactured using the injection moulding process, with serrated-sheet pattern surface, of versatile use to creatively modify or enlarge your kits.

319 x 200 mm • 03/20

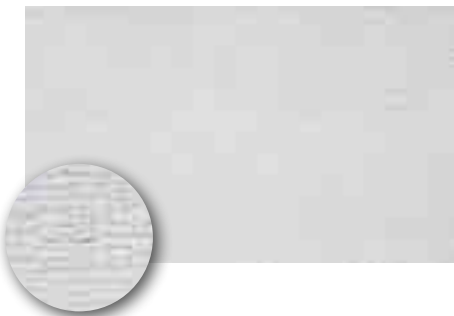


180737

»Shingles« Modeller plate

Kitbashing and entirely own constructions. Large modeller plate manufactured using the injection moulding process, with shingle pattern surface, of versatile use to creatively modify or enlarge your kits, e.g. for roof coverings or facade linings.

298 x 194 mm • 03/20

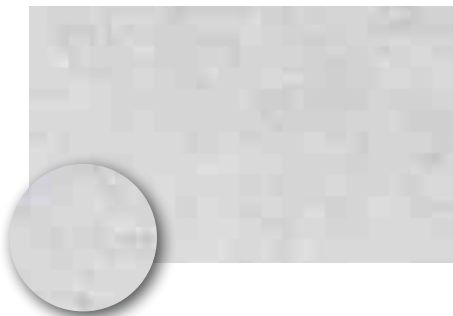


180738

Modeller plate »Quarry stone«

Kitbashing and complete do-it-yourself constructions. Large modeller plate manufactured by the injection moulding process, with quarry-stone pattern surface, of versatile use to creatively modify or enlarge your kits.

303 x 197 x 3 mm • 03/20

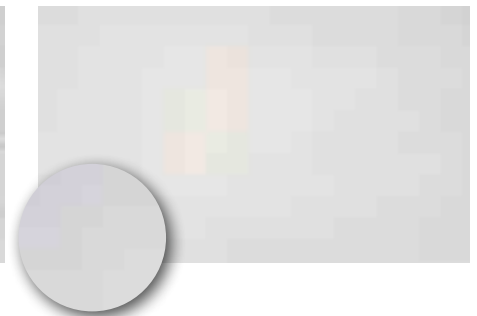


180739

Modeller plate »Reeds-thatch roof«

Kitbashing and complete do-it-yourself constructions. Large modeller plate manufactured by the injection moulding process, with straw roof or reeds-thatch roof pattern surface, of versatile use to creatively modify or enlarge your kits, e.g. for roof coverings.

319 x 199 x 2 mm • 03/20



180740

Modeller plate »Rendering, coarse«

Kitbashing and complete do-it-yourself constructions. Large modeller plate manufactured by the injection moulding process, with coarse-rendering pattern surface, of versatile use to creatively modify or enlarge your kits, e.g. for the design of interior or exterior walls.

319 x 199 x 2,3 mm • 03/20



[instagram.com/gebrfaller](https://www.instagram.com/gebrfaller)

We have expanded our social media presence and can now also be found on Instagram at @gebrfaller. Here, we show you the latest photos, news and promotions, and provide exciting insights into everything that inspires us. We look forward to every follower and to lots of photos of your projects. How to do this? Very easily: Tag your FALLER pictures with @gebrfaller or with the hashtag #gebrfaller.

**Handicraft tip:**

Outdoor seating landscape built with Art. 180904 and Art. 180903 down below on this page.

**180985****Old-clothes container**

03/20

**180986****16 Tree trunks**

02/20

**180987****4 Tents**

03/20

**Video portal with value added**

On our YouTube channel, we now show you helpful video tutorials that give you basic knowledge and advanced techniques in the area of model building.

Visit us at:

▶ youtube.com/user/GebrFaller

and at our other social media profiles:

▶ facebook.com/faller.de

▶ instagram.com/gebrfaller

**180988****Outhouse**

02/20

**180989****7 Church benches**

02/20

**180904****12 Pallets****180903****40 Sacks**



FALLER CREATE



I WANT IT. I DO IT.

Designing personalized 1:87 models online



Inspiring technique

With FALLER CREATE you have at your disposal an online tool that is easy to handle and with which it's fun to design and modify building models.



Personalization

FALLER CREATE offers you a very high degree of designing freedom. You will project, colour, and personalize with decoration parts your individual and unmistakable one-of-a-kind building.



Rapidity

FALLER CREATE reduces the required times for design, manufacture and dispatch to a minimum. You will hold your dream model in your hands within a mere few days.



Made in Germany

With FALLER CREATE you design detailed high-quality building models made from a recyclable bioplastic. On doing so, the FALLER CREATE team will be pleased to help you with all means available to them.





PERFECT FINISHING

At www.faller-create.de, you can find all sorts of information and tips for extending and finishing your CREATE model, from unboxing to installation. Your unicum will be sent to you within a few days of being designed and can be processed further with all popular plastic adhesives and model paints. You can find our recommendations for finishing and arrangement under the menu item »Finishing«.

Full information at: www.faller-create.de/finishing



FACEBOOK & YOUTUBE

FALLER CREATE is now also active on Facebook and YouTube! We look forward to your visit, likes and comments on both our social media presences.

You can find the Facebook page here: <http://bit.ly/fb-create>

You can go to the YouTube channel here: <http://bit.ly/yt-create>



120290 Container bridge-crane

120285 Construction crane



232398 »Erlenhof« Stud farm

HIGHLIGHTS

2019

Review and suggestion



130591 »Brandshof« Filling station



130810 Multistorey car park



130611 Winery

Die Stadt gehört wir.



FALLER brands



TOMYTEC



You can get extensive catalogues and detailed brochures at a model construction store near you and via:
www.faller.de

Your FALLER Retailer



Gebr. FALLER GmbH
Kreuzstraße 9
78148 Gütenbach
Germany

Phone +49 7723 651-0
info@faller.de

www.faller.de
 www.car-system-digital.de
 www.facebook.com/faller.de
 www.instagram.com/gebrfaller
 www.faller-create.de