

NEW ITEMS ^{Nº 2} 2020



CONTAINER PRINCIPLE

Asphalt mixer

CONTAINER CRANE

bayernhafen crane model

MODULAR CONSTRUCTION SYSTEM

The latest from the Goldbeck series

Z-GAUGE – HIGHLY DETAILED

Architectural monument of Eutin



BIG IN SMALL THINGS



H0

4

Trade, business, industry	4 – 5, 8 – 11
Railway stations, railway buildings	6 – 7
The town, the village	12
Scenic modelling	13
Models of the month	14 – 15
Promotional sets Fair	16 – 17
Miniature figures	18



N

19

Railway stations, railway buildings	19
The town, the village	20 – 22
Models of the month	23
Miniature figures	24



Creating an atmosphere

Whether it's a playground, dovecot, decorative fountain or shepherd's cart – the new laser-cut miniatures are made down to the finest detail. Page 13.


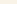
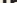
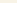


ANLAGENBAU

29

Modeller plates, Electronics	29
Water	30
Tools	31 – 32

Symbolism

Track gauge					
	H0	1:87 16.5 mm		N	1:160 9 mm
	TT	1:120 12 mm		Z	1:220 6.5 mm

Periods					
	Epoch I	1880 – 1920		Epoch IV	1978–1985
	Epoch II	1921–1945		Epoch V	1986–2006
	Epoch III	1946–1977		Epoch VI	2007–today



Seamless scene design

We have put together three new themed packages for you at a discounted price: a wine village, a Swiss hamlet and a village fair are now included in the special promotion. Pages 16 – 17.



25



CAR SYSTEM

26

Car System Digital	26
Car System	27 – 28



Heading to the countryside

After the successful launch of the FALLER farm-house series in H0, N train collectors can now also look forward to a rural house and farm complex in the countryside. Page 22.



120291

»GVZ Hafen Nürnberg«
Container bridge-crane

Available
now

Intermodal. Blue bridge-crane model for the handling of containers between the carriers rail, road and sea, similar to the original operated by DSD HILGERS Stahlbau GmbH in goods traffic centre GVZ in the Bavarian port of Nuremberg. Expandable to be a functioning model using the »Drive kit for Container bridge-crane«, Art. 180290. »Track extension for Container bridge-crane«, Art. 180291 available separately.

Epoch IV • Moveable model • 420 x 347 x 263 mm

180290

Drive kit for container bridge-crane

Control models »Container bridge-crane«, Art. 120290 and »GVZ Hafen Nürnberg Container bridge-crane«, Art. 120291, without software installation, that is exclusively browser-based from any WLAN capable desktop computer or notebook (device not supplied). Functions available: motion chassis forward/backward, motion travelling crab to the left/to the right, motion spreader up/down. Mobile elements can be stopped in any position. For further functions: three additional free control outputs are provided, which can be used for switching or moving applications. Products supplied: 4 motors, 2 motor regulating units, gears, toothed wheels, shafts, ball bearings, screws, stranded wires. Required Li-ion rechargeable batteries 3.7 V available separately.

ADVENT, ADVENT!

190025

Advent Calendar Figures

A lot of festive fun! FALLER Advent Calendar is definitely the right thing for all fans of hand-painted miniature figures.

Look forward to discovering a lovely collection of 24 new FALLER H0 figures including a Christmas surprise!

Epoch III - 09/20



Workshops 2021

Let's tackle it together!

Know-how on site: On our premises in Gütenbach we shall show you how thrilling and diversified scale modelling can be. Model layout, Car System or Car System Digital: in our workshops newcomers and advanced modellers will learn from experienced professionals, and will take home useful tips for their project. Just book a place now – and take part!

Car System Digital
April 23 – 24, 2021
October 15 - 16, 2021

Layout Construction
June 18 - 20, 2021
October 22 - 24, 2021

Car System Digital vehicle conversion
April 26 - 27, 2021
October 18 - 19, 2021

Layout Construction Topic: Backyards
March 5 - 7, 2021

Car System Basis
June 11 - 13, 2021

Topic: Castle ruin
September 3 - 5, 2021

You can find other workshop dates and the registration form at www.faller.de



FALLER newsletter



Subscribe now!

No longer miss anything! All information on new items, products, trends, and dates – FALLER's Newsletter summarizes all this briefly and succinctly. Whoever hasn't subscribed yet, should best do it right now.

Grow. Together. Hand in hand

Social Media

Unfortunately, the corona pandemic turned this year's plans upside and down and deprived us of the opportunity to meet you in person at one of the fairs. Nevertheless, we want to experience beautiful model making moments, announcements and stories with you together. You will receive daily updates from us through our social media platforms. Have a look, like, comment on and share our posts – **we look forward to hearing from you!**

A new top brand in the FALLER programme

Arwico collectors edition

ACE – arwico collectors edition – offers an extensive selection of finished models based on original Swiss models of military vehicles, agricultural tractors, trucks, buses, automobiles, motorcycles and airplanes in a scale of 1:18, 1:32, 1:43, 1:72 and 1:87.

The highly detailed finished models made of metal, plastic and resin are now available online at www.faller.de

12 highlights

Model of the month
April

Monthly models

Exclusive special models and authentic re-editions in limited quantity: With its coveted Models of the month FALLER addresses twelve times a year all passionate scale modellers who are in search of the unusual. Here it's worth being fast!

Look for the marked products.

Advice and repair

We'll adjust it

Always the right contact: no matter whether you have any question regarding the product or need professional maintenance – we shall be pleased to be of assistance by e-mail or on the phone.

E-mail: kundendienst@faller.de

Phone: +49 7723 651-106

Monday: 8.00 – 16.00 hours

Tuesday to Thursday: 8.00 – 12.00 hours

A DVSI Model Railway Group initiative

Wir Modellbahner

The [wirmodellbahner.de](http://www.wirmodellbahner.de) site does not only post stories, tips and video tutorials on varying model railway topics for beginners and returning model enthusiasts but also serves as a welcome platform for all relevant communities. The new followers series will showcase detailed portraits on creative model builders who have been successful on social media presenting their hobby with fun and enthusiasm.



Faller Classics

REAL COLLECTIBLES – REISSUED!

109924

B-924 Old-town block

Collector highlight! Comprehensive set of buildings with town wall allowing to create a diversified old-town scene in a tight space. First launch: 1965.



Epoch II - 310 x 130 x 174 mm - 10/20





130110

Asphalt mixing plant

The mix is essential. Transferable asphalt mixing works true to an original designed by Swiss building machinery manufacturer »Ammann Group Holding AG«. To ensure the effective transport of that mobile installation its core components such as weighing prefillers, drying and filtering units, mixing tower modules, tanks, pumps and control room are each built into some suitable housing which is also used as shipping container.

A hot-mixed mineral aggregate silo, a loading silo ensuring the transshipment of the coated materials in trucks, an elevator, catwalks, railings and many other details complement the model. Installation without any foundation. Suitable for Car System and Car System Digital.

Epoch V - Asphalt mixing plant: 397 x 190 x 207 mm, Bitumen container: 75 x 56 x 40 mm - 11/20



151612
Road building workers





120281

Roundhouse with 12° track angle

To shed your engines. Three-stall extensible roundhouse apt to be linked to turntables with an angle of outgoing tracks of 12°. Supporting steel structure and exposed masonry of that brick house are of contrasting colours. Lateral walls each feature seven windows, while each stall is fitted with three windows in the back wall, vent, skylight and chimney cope. Driving parts and articulated wire for the gates to be moved through a servo are included (Servo, Art. 180726 available separately). Shed for engines with a length over buffers of 290 mm. Clearance of gates/lower edge of the track line: 72 mm. Model suitable for all common track systems.

Extensible with »Supplementary set for Roundhouse with 12° track angle«, Art. 120282. For a half-circle roundhouse you need: 1 x Art. 120281, 6 x Art. 120282.

Epoch III • 377 x 494 x 129 mm



120268

Small substation with flat roof

Light-grey rendered substation tower with square base, flat roof and embedded girders with insulators which are, like the door, of contrasting colour. The kit is made from a mix of both materials, plastic and special cardboard.

Epoch III • 43 x 41 x 88 mm • 09/20



120267

»Ardez« Switchgear house

Electrification of the Rhaetian Railway lines. Masonry distribution tower with embedded insulators and a double-pitch roof, similar to an original built about 1913 in Ardez in Low Engadine. Ideal complement to »Ardez« Station, Art. 110144.

Epoch III • Patinated model • 78 x 71,5 x 135 mm



120571

Arcades with shops and interior equipment

Similar to the original city railway arches of the 19th century in Berlin and Vienna. Two track line segment of elevated railway with reddish exposed brick facade and three large-glazing arcades used as commercial premises by tradespeople. A comprehensive set of accessories is provided to furnish a greengrocer's shop, a coffee house and an antiques shop accommodated under the vaults. Line segment suitable for all track systems.

Epoch III • 358 x 138 x 97 mm



120580

Urban-railway station

Elevated position! Two-track urban-railway station placed on three viaduct arches with lateral flights of stairs, decorative pillars, copings, and cast iron railings as well as a glazed barrel roof. The brick vaults are partly used as commercial premises by tradespeople. Information panels and advertising posters among other things are provided for decoration. Model can be prolonged by juxtaposition. Track bed suitable for all track systems.

Epoch I • 360 x 200 x 198 mm



130880

Drive-in movie theatre

Open-air venues are all the rage in times of corona. The FALLER drive-in movie theatre is accessible to visitors via two driveways equipped with ticket booths and offers popcorn and coke at the refreshment stand.

Column loudspeakers provide sound and the large screen can be individually adapted to fit all common smartphone screen sizes.

Epoch IV • Driveway: 50 x 47 x 41 mm (2 x), Signs: 85 x 38 x 54 mm, Kiosk: 103 x 76 x 60 mm, Smartphone holder: 167 x 29 x 145 mm • 10/20



130588

Boathouse

On the water! Laser-cut model made from both materials wood and special cardboard showing a boathouse built on piles, with white sash bar windows, small roof overhangs, catwalks on three sides as well as a berth.

Epoch III • Lasercut model • 317 x 122 x 101 mm • 11/20



130612

Basket-maker

Laser-cut model of a basket-maker's shop in a one-storey house with sash bar windows, shutters, double pitch roof with ornamented gable and a small adjoining workshop made of bricks. Both entrances are sheltered through a common roofing.

Epoch III • Lasercut model • 116 x 132 x 86 mm • 12/20





130654

Health Centre

Three-storey building with cream facade lining, dark facing on the gable floor and an attic floor balcony. The ground floor is glazed to the roadside over its entire height and accomodates a pharmacy and a medical supply store under an overhanging roof.

Epoch IV - 135 x 140 x 164 mm - 10/20



151095

Rescue service at work



180891

2 Wall elements with horizontal windows, Goldbeck
Epoch VI - 50 x 60 x 2,5 mm (2 x),
Window: 41,5 x 22 x 1 mm (2 x) - 10/20



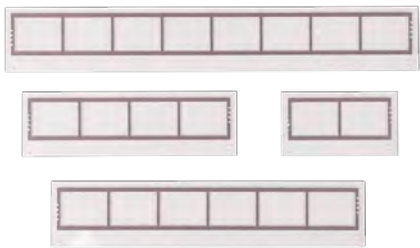
180892

Narrow wall elements, Goldbeck
Epoch VI - 50 x 10 x 2,5 mm (2 x),
100 x 10 x 2,5 mm (2 x), 150 x 10 x 2,5 mm (2 x) - 10/20



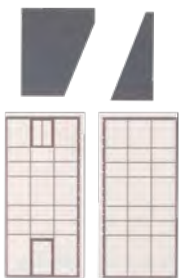
180893

Broad wall elements, Goldbeck
Epoch VI - 50 x 20 x 2,5 mm (2 x),
100 x 20 x 2,5 mm (2 x), 150 x 20 x 2,5 mm (2 x),
11 x 60 x 2,5 mm (2 x) - 10/20



180894

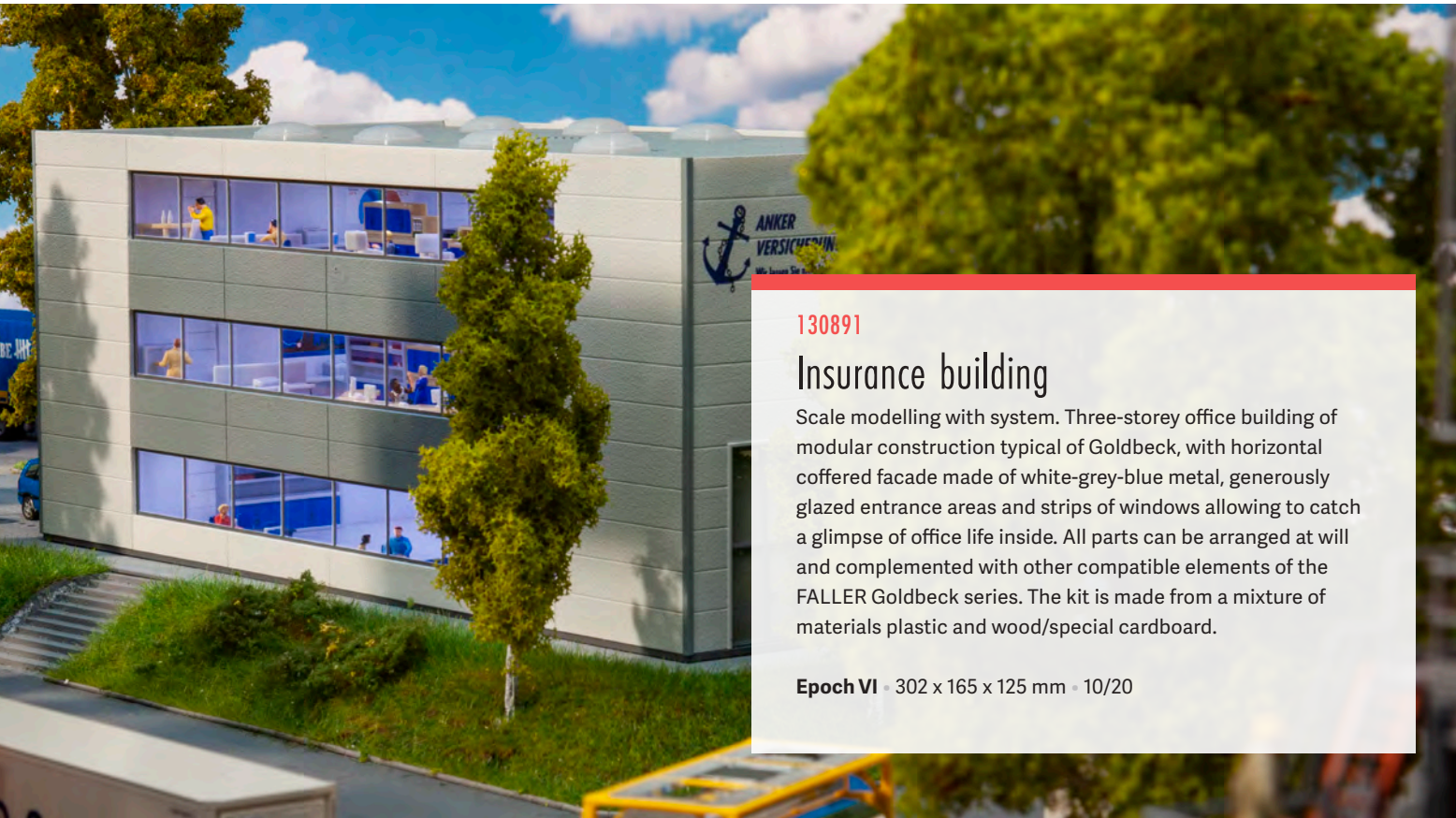
Set of glass elements, Goldbeck
Epoch VI - 208 x 33,5 x 1,4 mm,
158 x 33,5 x 1,4 mm, 108 x 33,5 x 1,4 mm,
58 x 33,5 x 1,4 mm - 10/20



180895

Glass corner element, Goldbeck
Epoch VI - 54 x 114 x 1,4 mm (2 x),
50 x 60 x 2,5 mm, 30 x 60 x 2,5 mm - 10/20

Additional elements of the Goldbeck modular kit and the expandable »Goldbeck Industry hall«, Art. 130890 can be found at www.faller.de



130891

Insurance building

Scale modelling with system. Three-storey office building of modular construction typical of Goldbeck, with horizontal coffered facade made of white-grey-blue metal, generously glazed entrance areas and strips of windows allowing to catch a glimpse of office life inside. All parts can be arranged at will and complemented with other compatible elements of the FALLER Goldbeck series. The kit is made from a mixture of materials plastic and wood/special cardboard.

Epoch VI - 302 x 165 x 125 mm - 10/20

12



130707

Row of small-town houses

Three-piece set of houses comprised of two three-storey buildings with eaves roofs parallel to the street, dormers, and a café with awning and seats in the outdoor area. Both buildings are joined through a four storey high, fully glazed construction.

Epoch III • Bakery: 62 x 100 x 152 mm,
Glass extension: 60 x 80 x 138 mm,
Townhouse with shop: 76 x 118 x 153 mm •
11/20

130642

Dwelling house with sheets roof

Large one-family dwelling house with plenty of French windows on the ground floor and a dwelling attic floor with remarkable facing and balcony. The kit is made from a mix of both materials, plastic and special card-board.

Epoch III • 124 x 107 x 83 mm •
09/20



180280

Charging station for electric vehicles

Good for the environment. Charging station with parking places for two electric vehicles. Model without function.

Epoch VI • 68 x 62 x 40 mm • 10/20



130637

Hunter hut with raised hide

For friends of nature. Decoration set comprised of a small log construction, rambler shelter hut, raised hide, wooden bridge, three wooden footbridges and accessories such as wheelbarrow, saw and axe.

Epoch III • Raised hide: 74 x 70 x 70 mm,
Wooden boardwalk 1: 39 x 18 x 13 mm,
Wooden boardwalk 2: 120 x 18 x 13 mm,
Wooden boardwalk 3: 106 x 46 x 24 mm,
Hunter hut: 85 x 52 x 46 mm,
Shelter: 45 x 38 x 30 mm • 11/20

13



180446

Playground

Lasercut Mini. Playground set with three play towers variably crowned with roofs or battlements, bridge, slide, climbing wall and climbing net.

Epoch V • Lasercut model • 89,5 x 79,5 x 56 mm • 10/20



180302

Decorative fountain

Central element of a garden or village square! Lasercut model of a masonry decorative fountain with roofing and water pump. Model without function.

Epoch III • Lasercut model • 23 x 21 x 24 mm



180299

Dovecote

Lasercut model of an octagonal dovecote featuring a conical roof and arched exit holes with alighting boards.

Epoch I • Lasercut model • 16 x 16 x 29 mm

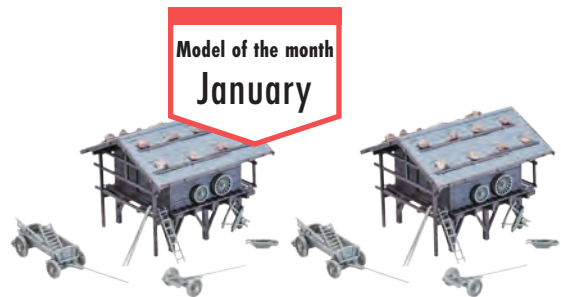


180303

Shepherd carriage

Lasercut model of a shepherd carriage with red shutters, two wooden wheels and drawgear.

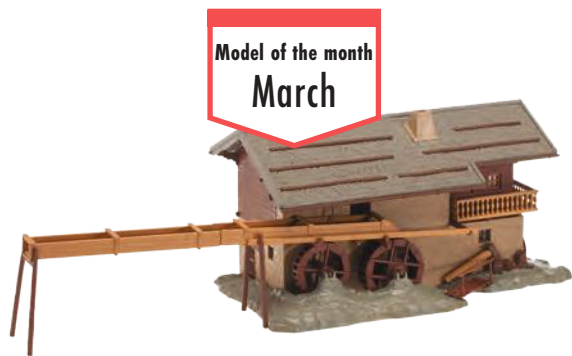
Epoch I • Lasercut model • 49 x 24 x 32 mm



191749

2 Grain stores

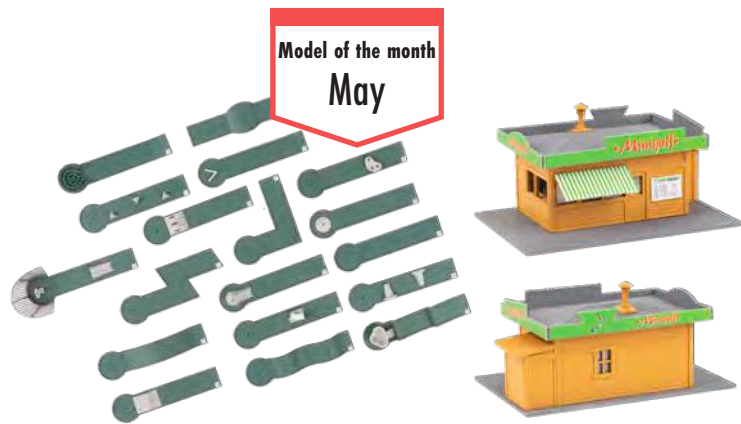
Epoch I • 69 x 58 x 70 mm (2 x)



191751

Alpine Hammersmith's shop

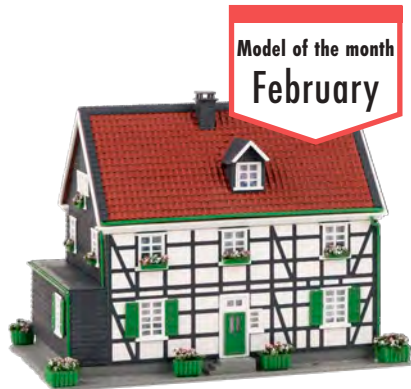
Epoch I • 310 x 115 x 100 mm



191753

Miniature golf course

Epoch IV • Kiosk: 110 x 41 x 55 mm



191750

Berg-country house

Epoch I • 163 x 117 x 122 mm



191752

»De Kat« Windmill

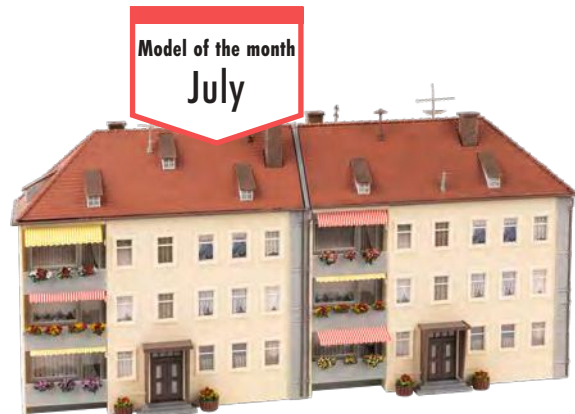
Epoch I • 255 x 180 x 330 mm



191754

Central police station

Epoch III • 191 x 155 x 190 mm



191755

Block of flats

Epoch III • 366 x 114 x 200 mm



191757

2 Urban relief houses, 3 storeys

Epoch I • 125 x 56 x 190 mm, 125 x 55 x 184 mm • 09/20



191758

2 Urban relief houses, 4 storeys

Epoch I • 126 x 46 x 230 mm, 126 x 56 x 223 mm • 10/20



191756

Albrecht-Dürer-House

Epoch IV • 145 x 115 x 205 mm

191760

Television tower

Epoch III • 190 x 256 x 893 mm • 12/20



191759

»Gera Liebschwitz« Station

Epoch II • 327 x 171 x 166 mm • 11/20

16



190075

Promotional Set »Swiss sweet village«

In Swiss high mountain! Four-piece village set comprised of two masonry chalets built in typical alpine style, one featuring a timber upper storey, a small village church with slender spire, and a barn used to store hay and firewood.

Epoch III • Hay barn: 130 x 75 x 70 mm, Church: 135 x 105 x 170 mm, Dwelling houses: 99 x 89 x 72 mm (2 x) • 09/20



190076

Promotional Set »Wine-grower village«

Old town atmosphere! Set of buildings with three typical wine-grower houses as well as wooden tubs and casks to design countryside festivities in a vine region.

Epoch III • Half-timber house 1: 121 x 126 x 95 mm, Half-timber house 2: 123 x 123 x 108 mm, House with stork's nest: 117 x 115 x 104 mm • 09/20



17

190074

Promotional Set »Village funfair«

Get on and have fun! Village funfair comprised of a 2-column dodgem car ride with old cars, a toilet carriage and barrier fences made of information and advertising banners as well as fairground signs. The dodgem car ride can be driven through FALLER synchronous modeller's motor, Art. 180629 (not supplied).

Epoch IV • Moveable model • Dodgem cars: 215 x 190 x 105 mm, Toilet wagon: 90 x 43 x 43 mm, Fence: 240 x 1,5 x 22 mm • 10/20



140418

»Daemonium« Ghost train

Horror spectacle in XXL format. Digitally printed functioning model of a large, travelling ghost train with three riding levels designed according to the original »Daemonium« of showman Martin Blume, an attraction built by »Mack« company.

Epoch V • Moveable model • incl. motor • 415 x 215 x 235 mm

Available
now





151614
Travellers



151608
Pedestrians



151601
Nuns



151603
The mountains are calling



151607
Stroll through the town



151611
Parcel services



151907
Red deer
09/20



151911
Goats
09/20

You can find many more sets with miniature figures in our new figurine programme on www.faller.de



212123
»Wittenberg« Station

Station of the future. Model of the single-storey station building of Lutherstadt Wittenberg, including travel centre, waiting lounge and service facilities based on the original templates by DB Station&Service AG. This especially environmentally friendly »green station« is characterised by slate and clinker brick as building materials, large glass surfaces and green roofs.

Epoch VI • 250 x 106 x 60 mm • 10/20



272583
Arcade set

Arcade set. Reddish facing brick facade with three arcades which have large glass surfaces used as sales areas by business owners. The second version of the facade has three bricked up viaduct arches.

Epoch II • 204 x 5 x 47 mm (2 x) • 12/20





232319

Town church

Model of a white, single-nave town church with apse, square tower ground plan and folding roof.

Epoch III • 160 x 70 x 230 mm • 11/20



232337

Lidl Supermarket

Welcome to Lidl! Branch of the German discounter based in Neckarsulm, with delivery zone on one side, double-pitch roof and metal cladding on gables. Decoration accessories typical of that supermarket are provided, such as advertising panels and a gathering point with shopping carriages.

Epoch V • 125 x 185 x 55 mm • 10/20



232324

Town house set »50s«

4-piece set of buildings allowing to build a row of houses from the 1950s, comprised of two four-storey town houses with ornamented stucco facades and shops, a two-storey dwelling house with passage to the backyard as well as a house under demolition with rubble. Models can be built independently and arranged in a variety of ways.

Epoch III • Town house under demolition: 152 x 82 x 114 mm, Bakery: 93 x 93 x 140 mm, Drugstore: 93 x 93 x 147 mm, Townhouse 1: 93 x 88 x 101 mm



232384

Apartment buildings with pharmacy and delicatessen shop

Two four-storey apartment buildings with historical stucco facades and shop fronts on the ground floor. One of the buildings is embellished with iron balconies and roof fences.

Epoch II • Townhouse 1: 92 x 98 x 130 mm, Townhouse 2: 92 x 88 x 138 mm



232379

Apartment buildings with electrical shop

Two four-storey apartment buildings with historical stucco facades. The building with shop front is embellished with roof fences and iron balconies. Fire walls on the sides allow the arrangement within a row of houses in a variety of ways.

Epoch II • Townhouse 1: 92 x 98 x 130 mm, Townhouse 2: 92 x 88 x 138 mm



232197 Farmhouse

Characteristic single dwelling combining living area, stable and barn under one roof. The ground floor of the two-storey farm with its varied roof coverings contains a large barn, shed and wood lean-to. The model offers variety with an outside stairwell, outdoor lavatory, cellar trapdoor and Eternit panels on a wall of the house. A wayside cross and a slurry pump are included as further decorations.

Epoch I - 97 x 79 x 66 mm - 11/20



222413
»Trumpf« Airship
Aerial advertising for sweets. Non-rigid airship with a grey basket, grey shell and the logo of chocolate brand »Trumpf«. The assembly kit is also suitable as a background model for the H0 scale.

Epoch III - 360 x 93 x 115 mm - 11/20



231701 Central police station

Epoch II - 103 x 70 x 80 mm



231705 Prefabricated house under construction

Epoch II - Scaffold: 50 x 8 x 70 mm, House: 48 x 36 x 54 mm



231706 Castle chemist's

Epoch II - 68 x 62 x 84,5 mm

231703 »Mittelstadt« Station

Epoch II - 446 x 160 x 130 mm - 12/20



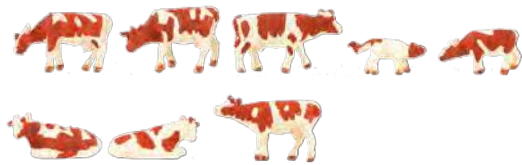
Model of the month
December



24



155901
Sheep farming
11/20



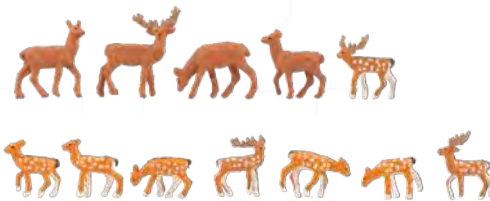
155902
Cows, brown flecked
11/20



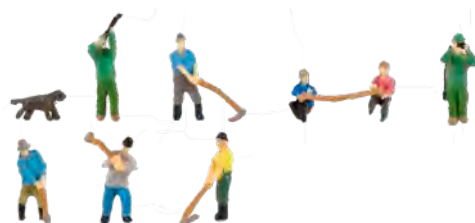
155903
Cows, Friesian
11/20



155904
Mountain cows
11/20



155905
Fallow deer, red deer
11/20



155601
Forestry workers and hunters
11/20



155602
Parcel services
11/20



25

282773 »Eutin« Pharmacy

Listed building! Faithful facsimile laser cut model of the Eutin pharmacy in Schleswig-Holstein established in 1694. Today, the two-storey timber-frame building with its raddle bracing, large gable and half-hipped roof is used as an office building.

Epoch I • Lasercut model • 66 x 54 x 59 mm • 12/20



282712 Gatekeeper's house

Along the track! Rural signalman's house surrounded by stone plinth, rendered facade and boarding on the top floor. A small shed is attached to the side. The assembly kit includes a floor plate.

Epoch III • 52 x 39 x 31 mm • 12/20



161317
Car System Digital MB Citaro
»Public bus« (RIETZE)
Epoch VI • 09/20



161314
Car System Digital MB Actros Truck
»StreamSpace« (HERPA)
Epoch VI • 11/20



161315
Car System Digital MB Atego Lorry
»FedEx« (HERPA)
Epoch V • 09/20



161316
Car System Digital MB Atego Lorry
»Dachser« (HERPA)
Epoch V • 09/20



161491
Car System Start set »MB Atego Lorry Sixt«
Package contents:
- Lorry MB Atego »Sixt« (HERPA)
- Storage battery charger
- Special guide wire 10 m
- Roadway knifing filler
- Roadway paint
- Roadway markings
- Crash barriers
- Barrier stakes
- Detailed assembly instructions
Epoch V • 09/20



161355
Car System Digital, Beginner's Set
The beginner's set, without the vehicle, provides all components that are necessary for getting started with fully automated operation of the Car System Digital. In addition to the 3 satellites, the Car System Digital Master, as well as the software necessary for the controls, are included in the set. The software is Windows compatible from Version XP SP2. In addition to a totally realistic road load, a fully comprehensible distance control of the vehicles is also possible! Playful fun is guaranteed.



161495
Car System Start set »MB O405«
Package contents:
- Bus MB O 405 (WIKING)
- Storage battery charger
- Special guide wire 10 m
- Roadway knifing filler
- Roadway paint
- Roadway markings
- Crash barriers
- Barrier stakes
- Detailed assembly instructions
Epoch V • 10/20



161493
Lorry MB Actros LH'96 »Roll-off container« (HERPA)
Epoch V



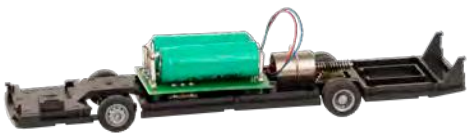
161486
Truck MB Actros »StreamSpace« (HERPA)
Epoch VI • 10/20



161494
MB Citaro »Public bus« (RIETZE)
Epoch VI



161492
Lorry Scania R 13 HL (HERPA)
Epoch VI



161474
Car System Conversion chassis »Lorry MB Citaro '12«
Pre-assembled, fully functioning Car System H0 chassis to convert Mercedes-Benz Citaro City Bus models by manufacturer RIETZE for Car System operation.

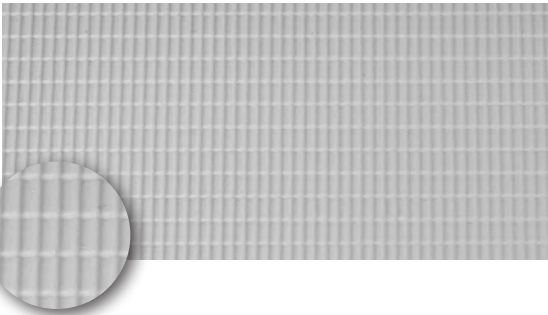
- Technical vehicle details:
- Powerful wear-resistant driving motor
 - Solid-rubber tyres
 - Battery within vehicle
 - Several hours of run time with a charge
 - Built-in charging socket
 - Use a battery charger (Art. 161349 or Art. 161690)

Epoch VI



180741
Modeller plate »Rendering, fine«
Kitbashing and complete do-it-yourself constructions. Large modeller plate manufactured by the injection moulding process, with the surface of fine rendering, of versatile use to creatively modify or enlarge your kits, e.g. to design interior or exterior walls.

Epoch I • 319 x 199 x 2,3 mm • 12/20



180742
Modeller plate »Pantile«
Kitbashing and complete do-it-yourself constructions. Large modeller plate manufactured by the injection moulding process, with the structured surface of roof covering with the classic »Pantile«, of versatile use to creatively modify or enlarge your kits.

Epoch I • 319 x 199 x 2,3 mm • 12/20

Distribution plate

Clear wiring! Low-voltage distribution plate with 2 x 10 sockets, incl. plugs, 2.5 mm. Identification colour as recommended by NEM.



180801
Distribution plate, red

180803
Distribution plate, blue

180802
Distribution plate, yellow

180804
Distribution plate, green

180805
Distribution plate, black



180806
30 Connectors for distribution plate
Set of 30 with coloured, 5 mm plugs, suitable for FALLER distribution plates, Art. 180686 and Art. 180801 – 180805. Identification colours as recommended by NEM.

5 Self-flashing LEDs

Eye-catcher! Light-emitting diodes with built-in microcircuit, to be used wherever a flashing lamp is required, e. g. as a visual signal on stationary models of vehicles (police, rescue service, fire brigade, construction industry, municipal companies, or agriculture), during gate opening and shutting movements, for the illumination of funfair models, and many others more. Advice: For lighting effects on Car System vehicles, use the Flashing lights, Art. 163760 to 163765.



180716 yellow

Supply voltage: 3-4 V DC
Current input: up to 20 mA
Flashing rate: approx. 1.5 Hz

International component size: 0805
Length: 2 mm
Width: 1.25 mm
Height: 1.1 mm

11/20



180717 green



180718 RGB alternating

Supply voltage: 3-4 V DC
Current input: up to 20 mA
Blinking, tricolour

International component size: 0807
Length: 2 mm
Width: 1.8 mm
Height: 0.8 mm

11/20



180719 white

Supply voltage: 3-4 V DC
Current input: up to 20 mA
Flashing rate: approx. 6.8 Hz

Ø: 5 mm
Height: 8.7 mm
Pitch: 2.54 mm

11/20



171657

Modelling water, blue-green

Blue-green tinted, single-component modelling water allowing to style realistic water bodies such as rivers, brooks, ponds, lakes or puddles.

Content: 240 ml

09/20

171658

Modelling water

Transparent, single-component modelling water allowing to style realistic water bodies such as rivers, brooks, ponds, lakes or puddles.

Content: 240 ml

09/20



171659

Water effect

Water effect allowing to style water bodies in motion and waterfalls.

Content: 60 ml

09/20

TOOLS

Small helpers in any situation. No matter whether you want to cut, drill or glue. Various aids make work on models easier.



170537

3-in-1 Device, battery-powered, for modellers

Polyvalent tool with interchangeable bits for cordless soldering, hot cutting and heat shrinking. With LED lighting. Contains 4 bits: Soldering bit, 12 W. Foam shaper, pin bit, 1.2 mm. Foam cutter, blade bit, 5 mm. Bit for heat shrinking, 16 W. USB charging cable for rechargeable battery supplied. Li-Ion battery 3.7 V, 2400 mAh.

10/20



172161

Replacement paintbrush tips

Set of 4 shape-retaining synthetic replacement paintbrush tips, 2 x 7 mm and 2 x 9 mm, for »Detail paintbrush with interchangeable tip«, Art. 172160.

10/20



170535

LED Magnifier lamp with stand

LED Hand-held magnifier with built-in stand, strength 5 x, two brightness levels and USB charging function. Lens diameter: 75 mm. Lithium rechargeable battery 3.7 V, 300 mAh.

10/20



170536

3D Printing retouching set

For the most diverse 3D printing methods! Tool set for the post-processing of 3D printed parts in model building, consisting of a hand vice, a knife with sharp replacement blades, a blunt modelling spatula as well as one round and one flat file. With handy tool case.

10/20

172160

Detail paintbrush with interchangeable tip

Fine detail paintbrush with interchangeable, shape-retaining synthetic tips, 7 mm and 9 mm.

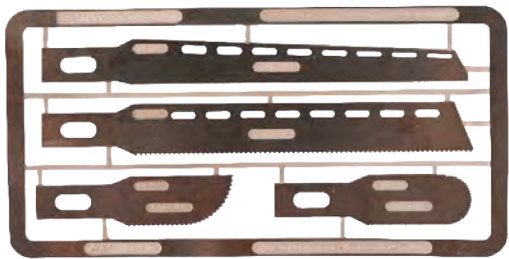
10/20





170533
Flexible masking adhesive tape,
2 mm and 3 mm wide

Twin pack, elastic adhesive tape, 2 mm wide x 18 m and 3 mm wide x 18 m, covers curved lines and surfaces accurately and wrinkle-free. No paint smeared. Removable without leaving any residue.



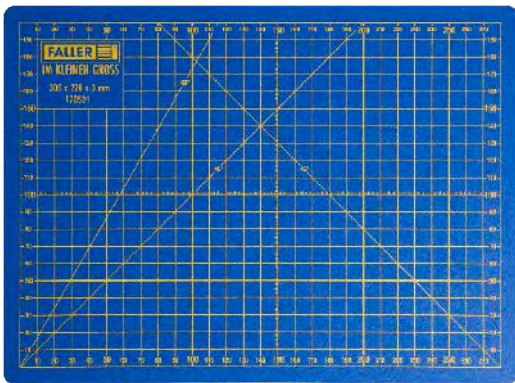
170539
Set of saw blades for modeller's knife

Set of 4 finely serrated miniblades, 0.24 mm, allowing to accurately saw plastic and etched-metal pieces. Matches »Modeller's knife with 20 blades, soft grip«, Art. 170540.



170548
Precision modeller's
knife

Precision modeller's knife with aluminium grip, long-lasting SK5 steel blades and plastic protecting cap.



170524
Cutting mat

Clever working pad! Protects the surface of tables and simultaneously avoids affecting the sharpness of your modeller's knife. That high-quality long-lasting mat is provided with an horizontal and vertical grid in cm and the printed FALLER logo. The sandwich structure of the material closes by itself after cuts. Format: 300 x 220 x 3 mm (A4).



170540
Modeller's knife with 20 blades, soft grip

Aluminium! Makes any cutting and sawing work easier in the hobby and scale modelling sector for paper, cardboard, plastic, wood and sheeting. The soft grip is superhandy, even in the long run, while ensuring additional safety when seizing it. The reinforced grip also allows minor sawing work. A magnet at the tip of the knife makes it easy to pick up blades or tiny metal pieces. The turning fastener allows to replace the different blades easily and rapidly. Includes 4 types of scalpel and saw blades. Including a box for safe storage.

170688
Special
side cutter

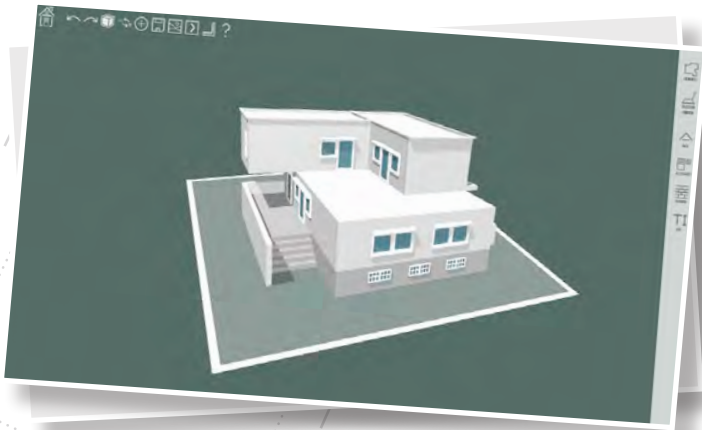
For cutting off ultra-fine moulded parts without burrs. Only suitable for polystyrene and copper wires.



TOP
SELLER

I WANT IT. I'LL DO IT.

We are continuously developing.



Webinars

You can meet our FALLER CREATE designers live in our webinars, who will create a detailed building model together with you. They will answer any of your questions and show you many useful tips. Another highlight is that we will connect you via live video and show you around our 3D print production in Leipzig!

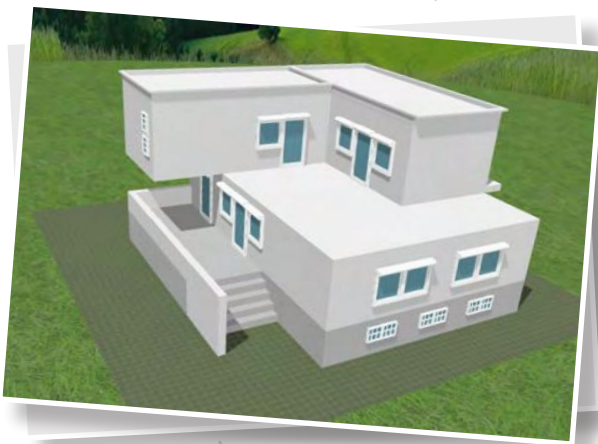
New dates will be posted online regularly. You can find them at www.faller-create.de/webinare



Ready made

Don't feel like building yourself? You'll find preconstructed highlight buildings on a scale of 1:87 in our online store. We'll send them to you fresh off the 3D printer.

For garden railroaders, we also offer selected POLA G accessories, also produced using 3D printing. www.faller-create.de/3d-druck-objekte



2021 will be the year for a number of fundamental innovations at FALLER CREATE. You will be able to build more freely in the software, allowing for more possibilities. As such, roof windows, curves or size-adjustable doors and windows can be done in the future. In addition to the H0 track gauge, FALLER CREATE will also be available for the track gauges N, TT and POLA G. What's more, there will be more fittings and accessories to choose from which will give your house an even more personal touch.

FALLER brands



You can get extensive catalogues and detailed brochures at a model construction store near you and via: www.faller.de

Your FALLER Retailer



Gebr. FALLER GmbH
Kreuzstraße 9
78148 Gütenbach
Germany

Phone +49 7723 651-0
info@faller.de

www.faller.de
 www.car-system-digital.de
 www.faller-create.de
 www.facebook.com/faller.de
 www.instagram.com/gebrfaller