

20 23

**UK MODEL
RAILWAY
PRODUCTS**

www.heljan.co.uk



BUILT TO TACKLE THE TOUGHEST JOBS

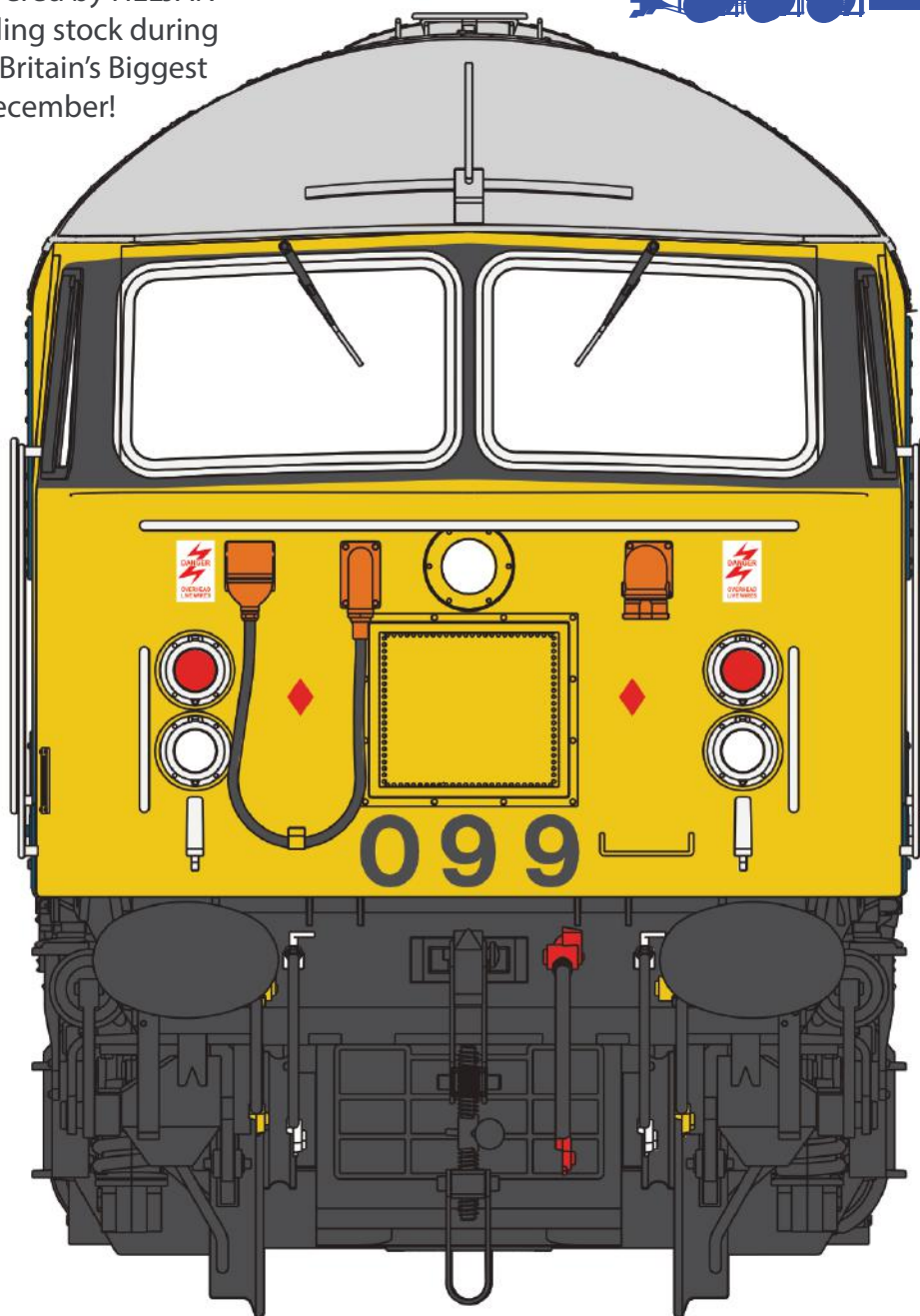
From 'Britain's Biggest Model Railway' to your home layout, HELJAN 'O' gauge models deliver quality, reliability and heavy haul power.

0052504

Scale miles were covered by HELJAN locomotives and rolling stock during the public debut of 'Britain's Biggest Model Railway' in December!



Average train weight



Visit us at facebook.com/heljanas or click www.heljan.co.uk for more information



Welcome

A very warm welcome to the 2023 HELJAN UK catalogue. This is your one-stop shop to discover our current range of British outline locomotives in OO9, OO and O gauge.

As you'll see over the coming pages, we're not just working on all-new models, we are overhauling existing models in our range to bring them up to the latest standards for detail, lighting and digitally controlled features.

Highlights for 2023 include the much-requested Class 58 and Southern Railway Utility Van in O gauge plus the popular Class 86/2 and Newton Chambers Car Carrier in OO gauge.

In response to changing demands, 2022 saw the release of our first twin-motor O gauge diesels designed for 'plug-and-play' DCC conversion and fully controllable DCC lighting functions for our next generation of models. Our first British OO models with factory-fitted DCC sound will make their debut in 2023.

The growing popularity of O gauge modelling means that we're also producing reruns of the most sought-after products, such as the Class 20 and 'Western' diesels to cater for demand and deliver new liveries and variants that have not previously been offered.

As if this wasn't enough, we will be making further announcements on new products at various stages of development during the year, so look out for progress reports at www.heljan.co.uk, the HELJAN Facebook page and across the model railway media.

Acknowledgements

HELJAN A/S would like to thank *Hornby Magazine*, *Model Rail* magazine and Andy York of *RMweb/BRM Magazine* for use of their images in this catalogue, and *Squark Design* for its design and production.

Contents

004	OO9 Steam Locomotives	022	O Gauge BR Diesel/Electric Locomotives
005	OO Gauge Steam Locomotives	034	O Gauge DMUs/Railcars
006	OO Gauge BR Diesel Locomotives	034	O Gauge Train Builder
016	OO Gauge Diesel Railcars	038	O Gauge Coaching Stock
018	OO Gauge Electric Locomotives	042	O Gauge Freight Wagons
019	OO Gauge Rolling Stock	043	OO/O Kits & Accessories

Key to Features

6 PIN	Six-pin DCC decoder interface	8 PIN	Eight-pin DCC decoder interface	NEXT 18	Next18 DCC decoder interface	21 PIN	Eight-pin DCC decoder interface	L PIN	ESU LokSound L decoder interface
XL PIN	ESU LokSound XL decoder interface	DCC READY	Designed for easy DCC installation	NEM COUPLERS	Interchangeable couplings	SOUND READY	Designed for DCC sound equipment	INTERIOR LIGHTS	Working interior lights
LIGHTING READY	Designed for easy-fit interior light bar	WORKING LIGHTS	Working exterior lights	SPRUNG BUFFERS	Fitted with working sprung buffers	SOUND FITTED	Factory fitted DCC sound	DCC FITTED	Factory-fitted decoder
SMOKE READY	Designed for DCC sound equipment	NEW FOR 2021	New Releases						

NARROW GAUGE LOCOMOTIVES



6 PIN

DCC
READYNEM
COUPLERSSPRUNG
BUFFERS

LYNTON & BARNSTAPLE RAILWAY MANNING, WARDLE 2-6-2T

Class Profile: A trio of 2-6-2T locomotives built for the 1ft 11½in gauge Lynton & Barnstaple Railway in North Devon, joined by a fourth locomotive, *Lew*, in 1925 and used until the railway closed in 1935. A replica locomotive, *Lyd*, is based at the Ffestiniog Railway in Wales.

Built by: Manning, Wardle of Leeds

Number built: 4

Number series: *Yeo*, *Exe* & *Taw* (SR E759-761), *Lew* SR E188

Service Career: 1898-1935

L&BR MANNING, WARDLE 2-6-2T

9961	plain black 190 <i>Lyd</i>
------	----------------------------

Version 2 features revised flat-back cab and detail differences for original E188 (1925-36) and new-build E190 *Lyd*.

Region: North Devon

Purpose: Mixed traffic

Status in 2022: 1 x operational replica (*Lyd*)



6 PIN

DCC
READYNEM
COUPLERSWORKING
LIGHTSSPRUNG
BUFFERS

LYNTON & BARNSTAPLE RAILWAY BALDWIN 2-4-2T LYN

Class Profile: Built in the USA by Baldwin, this locomotive joined the Lynton & Barnstaple Railway fleet in 1898, working alongside the British-built 2-6-2Ts (see above). A replica is based at the rebuilt Lynton & Barnstaple Railway at Woody Bay.

Built by: Baldwin, USA

Number built: 1

Number series: *Lyn*, SR 762

Service Career: 1898-1935

Region: North Devon

Purpose: Mixed traffic

Status in 2022: 1 x operational replica

L&BR BALDWIN LYN

No.	Description
9980	Undecorated works black
9981	L&BR dark green/red oxide <i>Lyn</i>
9982	L&BR dark green E762 <i>Lyn</i>
9983	SR dark green E762 <i>Lyn</i>
9984	Southern green E762 <i>Lyn</i> (1928-32)

'OO' STEAM LOCOMOTIVES

**DUE
IN
2023!**



**21
PIN**
**DCC
READY**
**NEM
COUPLERS**
**SPRUNG
BUFFERS**
**SOUND
READY**

LNER GRESLEY 'O2' 2-8-0

Class Profile: Introduced by the Great Northern Railway in 1921 to a design by Nigel Gresley, these powerful 2-8-0s were built to haul heavy coal and ironstone trains. Several batches were built over a 22-year period by the Great Northern Railway (GNR) and LNER, with numerous improvements such as better cabs and bigger tenders. Our new models depict the 'O2/1', 'O2/2' and 'O2/4' variants with the previously unreleased GNR style cabs (original high style and reduced height 'composite loading gauge' type) and a choice of GNR and LNER Group Standard tenders.

Built by: GNR/LNER Doncaster Works, North British, Glasgow

Number built: 67

Number series: 63922-987 (BR)

Service Career: 1921-63

Region: GNR/LNER, BR Eastern Region

Purpose: Heavy mineral trains

Status in 2022: Extinct

DUE 2022! GNR/LNER 'O2' 2-8-0

No.	Description
3900	LNER lined black O2/2 No. 3501 (GN cab/tender)
3901	BR late crest black O2/2 No. 63937 (GN cab/LNER flush-sided tender) WEATHERED
3902	BR early emblem black O2/2 No. 63933 (GN cab/tender)
3903	BR late crest black O2/2 No. 63940 (GN cab/tender)
3904	BRITISH RAILWAYS black O2/2 No. 63938 (GN cab/tender)
3930	GNR lined grey O2/1 No. 477 (GN high cab/tender)
3931	LNER black O2/1 No. 3481 (GN high cab/tender)
3932	LNER post-war black O2/1 No. 3481 (LNER cab/GN tender)
3934	BR late crest black O2/1 No. 63923 (LNER cab/LNER stepped side tender)
3940	LNER wartime black O2/4 No. 3479 (LNER cab/GN tender)
3941	BR early emblem black O2/4 No. 63924 (LNER cab/GN tender) WEATHERED
3942	BR early emblem black O2/4 No. 63945 (LNER cab/GN tender)
3943	BR late crest black O2/4 No. 63932 (LNER cab/GN tender)



SEE US 'ON THE ROAD' IN 2023!

FEBRUARY 25-27

MODEL RAIL SCOTLAND, SEC GLASGOW

MARCH 10-11

BRITAIN'S BIGGEST MODEL RAILWAY, HARROGATE

MARCH 25-26

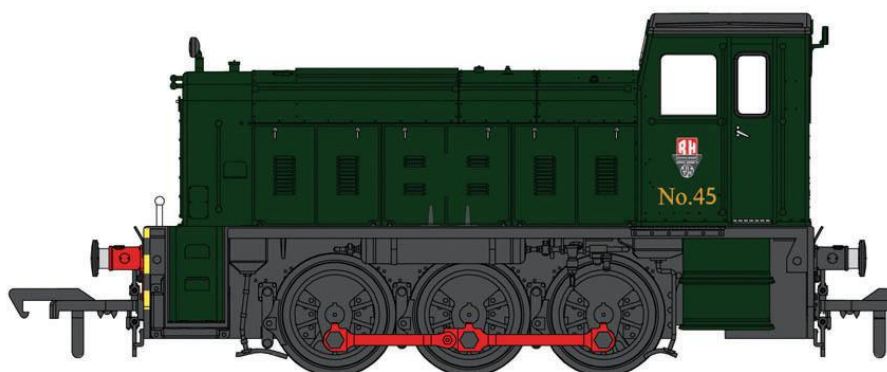
MIOG 2023, CREWE HERITAGE CENTRE

SEPTEMBER 2-3

GUILDEX STAFFORD

LOOK OUT FOR MORE SHOW INFORMATION ON OUR FACEBOOK PAGE

'OO' DIESEL LOCOMOTIVES



**DUE
IN
2023!**

**NEXT
18**

**DCC
READY**

**NEM
COUPLERS**

**SOUND
READY**

**WORKING
LIGHTS**

RUSTON & HORNSBY 165DE 0-6-0

Class Profile: These 165hp diesel shunters were built in various configurations for industrial railways, with Ruston offering mechanical, hydraulic or electric transmissions and a choice of 0-4-0 or 0-6-0 wheel arrangements. While most of the 164 '165DEs' built in the 1950s/60s were two-axle machines, a small number were delivered as 0-6-0 diesel-electrics, including five to BR Western Region (as produced by HELJAN for *Model Rail* magazine/Kernow Model Rail Centre).

Built by: Ruston & Hornsby,

Lincoln

Number built: 164

Number series: N/A

Service Career: 1950s to 1980s

Region: Industrial

Purpose: Shunting

Status in 2022: Five preserved

DUE 2022! RUSTON 165DE 0-6-0

No.	Description
9770	Industrial yellow
9771	NCB dark green No. 45



**DUE
IN
2023!**

**NEXT
18**

**DCC
READY**

**NEM
COUPLERS**

**WORKING
LIGHTS**

**SOUND
READY**

**INTERIOR
LIGHTS**

BR/YORKSHIRE CLASS 02 0-4-0DH

Class Profile: Built to replace the legendary Lancashire & Yorkshire Railway 0-4-OST 'Pugs', this class of 20 short-wheelbase 0-4-0 diesel-hydraulic locomotives was based on a standard industrial design. Delivered to depots in the north-west of England for shunting tightly-curved lines around docks and goods depots, many were sold into industry in the late-1960s and subsequently preserved to enjoy a third life at heritage railways.

Built by: Yorkshire Engine Co., Sheffield

Number built: 20 (BR), 50 (industrial)

Number series: D2850-69, 02001/003/004

Service Career: 1960-75 (BR), late-1950s to 1990s (industrial)

Region: London Midland/industrial

Purpose: Shunting on tightly curved dock/factory lines

Status in 2021: Seven preserved (D2853/54/58/60/66-68)

DUE 2023! BR/YORKSHIRE CLASS 02 0-4-0

No.	Description
2840	BR green D2861 (wasp stripes, red bufferbeam)
2841	BR green D2864 (wasp stripes, yellow bufferbeam)
2844	BR green 02004 (wasp stripes, no BR logo) WEATHERED
2847	Industrial yellow with wasp stripes
2850	Industrial green 'SAM' (ex-D2868) WEATHERED

6
PINDCC
READYNEM
COUPLERSWORKING
LIGHTSSPRUNG
BUFFERS

BR/RUSTON CLASS 07

Class Profile: A small class of powerful diesel-electric shunters built by Ruston & Hornsby to work in and around Southampton Docks, replacing the famous 'USA' 0-6-0T steam locomotives. After withdrawal in the late-1970s, several were sold for industrial use around the UK.

Built by: Ruston & Hornsby, Lincoln

Number built: 14

Number series: D2985-98 (07001-014)

Service Career: 1962-77 (BR), 1977 onwards (industrial)

Region: Southern/industrial

Purpose: Dock shunting

Status in 2022: Five preserved (D2989/94-97)

Notes: V1 models are in original vacuum-brake only condition.

V2 models have dual air/vacuum brake equipment.

BR/RUSTON CLASS 07 0-6-0DE

No.	Description
2912	Peakstone yellow (V2)
2917	BR blue 2997 (V2)
2918	BR blue 07011 WEATHERED (V2)
2919	BR blue 07013 (V2)
2935	BR green D2994 WEATHERED (V1)
2936	BR blue 07012 (V1)
2937	BR green D2998 (V1)
2938	British Army green 423 (V1)



CHOOSE THE RIGHT MODEL FOR YOUR ERA

With so many models and liveries available, it can be difficult to know which suit your chosen period.

HELJAN has now adopted the widely used 'era system' for its products, which divides 200 years of

British railway history into nine key periods. All new models now have improved box end labels including information on features, specification and era to help you make more informed purchases.

ERA
1

1804-1875
Early Railways

ERA
2

1875-1922
Pre-Grouping

ERA
3

1923-1947 'Big Four'
(LMS, GWR, LNER & SR)

ERA
4

1948-1956 British
Railways Early Emblem

ERA
5

1957-1966 British
Railways Late Crest

ERA
6

1966-1971 British
Rail Blue pre-TOPS

ERA
7

1971-1982 British
Rail Blue TOPS era

ERA
8

1982-1994 British Rail
Sectorisation

ERA
9

1995 onwards –
Privatisation Era

21
PINDCC
READYNEM
COUPLERSWORKING
LIGHTSSPRUNG
BUFFERS

BR CLASS 14

Class Profile: A 650hp diesel-hydraulic design built by BR's Western Region to replace the legendary GWR Pannier Tanks. However, the type found little work with BR and many ended up with the National Coal Board and British Steel, or even sold abroad. As well as individual locomotives, we offer a train pack based on mid-1960s Western Region ballast trains from Tintern Quarry in the Forest of Dean.

Built by: BR Swindon Works

Number built: 56

Number series: D9500-55

Service Career: 1964-68 (BR), 1968 onwards (industrial)

Region: Western/Eastern/Industrial

Purpose: Short-distance trip freight

Status in 2021: 19 preserved

BR CLASS 14 0-6-ODH

No.	Description
1412	BR two-tone green D9505
1413	BR two-tone green D9545
1414	Buckminster Quarries S&L green No.21
1415	BR Maroon D9523
1416	National Coal Board pale blue D9530
1417	BP light green D9524
1420	Train Pack - BR green D9553 with 4x BR Black 'Dogfish' ballast hoppers

8
PINDCC
READYNEM
COUPLERSWORKING
LIGHTSSPRUNG
BUFFERS

BR/CLAYTON TYPE 1 - CLASS 17

Class Profile: Experience with the early Type 1 diesels revealed a need for better visibility for crews and the result was the Clayton Type 1 with its characteristic centre cab. Unfortunately, the twin-engined design proved to be unreliable and despite 117 examples being built, the class managed less than a decade in service.

Built by: Clayton/Beyer Peacock

Number built: 117

Number series: D8500-D8616

Service Career: 1962-71 (BR), 1972-82 (industrial)

Region: Scottish, Eastern, North Eastern

Purpose: Light goods and passenger

Status in 2022: One preserved (D8568)

BR/CLAYTON TYPE 1 - CLASS 17

No.	Description
1724	BR blue D8568 (small yellow panels)
1725	BR green D8607 (small yellow panels)
1726	BR green D8599 (small yellow panels) WEATHERED
1727	BR green D8539 (full yellow ends)
1728	Railfreight 'Red Stripe' 17007
1729	BR blue 8538 (full yellow ends) WEATHERED



**DUE
IN
2023!**

**21
PIN**

**DCC
READY**

**NEM
COUPLERS**

**WORKING
LIGHTS**

**SPRUNG
BUFFERS**

**SOUND
READY**

**INTERIOR
LIGHTS**

BR/NBL 10800

Class Profile: A unique prototype ordered by the LMS but delivered to BR in 1950, 10800 was intended as a possible replacement for mixed traffic tank locomotives on secondary passenger and lighter goods trains. Despite extensive testing on the Midland and Southern regions and modifications to improve performance it was never a reliable machine. After withdrawal in 1959 it was sold to Brush and became an early testbed for AC traction technology, eventually being scrapped in 1976. Our model features a factory-fitted speaker for 'plug-and-play' DCC sound capability and separately switchable light functions.

Built by: North British, Glasgow

Number built: 1

Service Career: 1950-59

Region: London Midland/Southern

Purpose: Mixed traffic

Status in 2022: Extinct

NEW FOR 2023! BR/NBL PROTOTYPE 10800

No.	Description
1080	BR Early Emblem Black/Silver 10800 (mid-1950s)
1081	BR Early Emblem Black/Silver 10800 (mid-1950s) WEATHERED
1082	BR Early Emblem Black 10800 (late-1950s)
1083	BR Late Crest Green 10800



HELJAN SPARES & REPLACEMENT PARTS

If you require replacement parts or spares for your HELJAN OO9, OO and O gauge models, please contact Gaugemaster, our UK agent, which offers an extensive range of more than 6,000 original parts*.

Gaugemaster also provides online access to exploded parts diagrams and price lists, making it easier for you to identify and order the parts you need. Spares can be ordered online or by telephone via the methods shown below.

** Please note that we cannot guarantee the availability of all spare parts for every HELJAN product at all times, especially older models that have been discontinued.*

 **Order online:** www.gaugemasterretail.com

(Search Heljan spares)

 **Order by telephone:** 01903 884488



**NEW
LIVERIES
FOR
2023!**

**21
PIN**

**DCC
READY**

**NEM
COUPLERS**

**SOUND
READY**

**WORKING
LIGHTS**

**SPRUNG
BUFFERS**

**INTERIOR
LIGHTS**

BR/SULZER TYPE 2 - CLASS 25

Class Profile: Our Class 25 depicts the later body design variant of the popular and successful BR Derby/Sulzer Type 2, used on almost any type of train across a very wide area of the country from the 1960s until the late-1980s. In the mid-1980s, three locomotives were converted into mobile electric train heating units (ETHELs) for use with Mk3 sleeping cars on Scottish Region overnight trains.

Built by: BR Derby Works/Beyer Peacock

Number built: 239

Number series: D5238-99, D7500-D7677 (25088-327)

Service Career: 1963-91

Region: All except Southern

Purpose: Mixed traffic

Status in 2022: 12 preserved (25173/185/191, 25262/265/278/279/283, 25309/313/321/322)

Features: Original circular or revised exhaust ports, optional blanking plates for side grilles and boiler footsteps.

NEW LIVERIES! BR/SULZER TYPE 2 - CLASS 25

No.	Description
2543	BR two-tone green D5243 (small yellow panels)
2544	BR blue 25095 (cab front numbers)
2545	BR blue/grey 97251 'ETHEL 2'
2546	BR blue 25904 (domino headcodes)
2547	BR blue 25301 (domino headcodes)
2548	BR two-tone green 7561 (full yellow ends)
2549	BR blue 25323 (pre-1976)
2570	BR blue 7513 (full yellow ends)

* Scottish Region electric train heating unit converted from Class 25s and towed by other locomotives. This model is unpowered but retains working lights and DCC interface.

**21
PIN**

**DCC
READY**

**NEM
COUPLERS**

**WORKING
LIGHTS**

**SPRUNG
BUFFERS**

**INTERIOR
LIGHTS**

**SOUND
READY**

BRCW TYPE 2 - CLASS 26/1

Class Profile: An all-new version of our ever-popular BRCW Class 26, featuring a comprehensively upgraded specification, finer detail and twin factory-fitted speakers, plus a new variant with Far North Line twin headlights. The Class 26s were one of the most successful and long-lived BR 'Pilot Scheme' designs; the initial 20 locomotives were followed by 26 more (Class 26/1) and all were concentrated on the Scottish Region from the 1960s. Used on everything from heavy sleeping car trains to local goods trips, the '26s' proved to be reliable, robust and versatile.

Built by: Birmingham Railway Carriage & Wagon Co., Smethwick

Number built: 47

Number series: D5300-46 (26001-046)

Service Career: 1958-93

Region: Eastern, Scottish

Purpose: Mixed traffic

Status in 2022: 13 preserved (Class 26/0 - 26001/002/004/007/010/011/014. Class 26/1 - 26024/025/035/038/040/043)

NEW FOR 2023! BRCW/SULZER TYPE 2 - CLASS 26

No.	Description
2625	BR Blue 26039 (twin headlights)
2626	BR Blue 26032 (twin headlights) WEATHERED
2641	BR Green D5333 (small yellow panels)
2642	BR Green D5335 (full yellow ends)
2643	BR Blue 26023 (tablet catcher recess)
2644	BR Blue 26042 (dual braked)
2645	Railfreight Red Stripe 26038
2646	Civil Engineers Grey/Yellow 26026

8
PINDCC
READYNEM
COUPLERSWORKING
LIGHTSSPRUNG
BUFFERS

BRCW TYPE 2 - CLASS 27

Class Profile: A more powerful development of Class 26 with a 1,250hp engine and four-character headcode panel in place of the old disc system. Initially distributed across the London Midland, North Eastern and Scottish regions, from the late-1960s they were concentrated in Scotland and continued in passenger, freight and departmental service until 1987.

Built by: BRCW, Smethwick

Number built: 68

Number series: D5347-46 (27001-066/101-124, 27201-212)

Region: London Midland, North Eastern, Scottish

Purpose: Mixed traffic

Status in 2022: 8 preserved
(27001/005/007/024/050/056/059/066)

BRCW/SULZER TYPE 2 - CLASS 27

Version 1: Locos with droplight cab window and sealed ends

No.	Description
2719	BR 2-tone green 5380 (full yellow end) WEATHERED

Version 3: With sliding cab windows, sealed ends and tablet catcher recess

2731	BR green D5369 (small yellow panel)
2732	BR blue 5357 (full yellow end)

NEW
TOOLING
FOR
2023!

8
PINDCC
READYNEM
COUPLERSWORKING
LIGHTSSPRUNG
BUFFERS

BRCW TYPE 3 - CLASS 33/0

Class Profile: These capable and versatile mixed traffic machines were built for the Southern Region, but seen further afield from their earliest days. Class 33/0 is the standard variant employed on freight and passenger work both singly and in pairs. The ever-popular HELJAN model is available with both original and revised exhaust ports and with high intensity headlights fitted from the late-1980s onwards.

Built by: BRCW, Smethwick

Number built:

Number series: D6500-85 (33001-065)

Service Career: 1962 onwards

Region: Southern

Purpose: Mixed traffic

Status in 2022: 3 Active/15 preserved

CLASS 33/0 WITH HIGH INTENSITY HEADLIGHT (LATE-1980S ONWARDS)

No.	Description
3458	Civil Engineers grey/yellow 33025 WEATHERED
3459	DRS blue 33029



NEW
LIVERIES
FOR
2023!

21
PINDCC
READYNEM
COUPLERSWORKING
LIGHTSSPRUNG
BUFFERS

BRCW TYPE 3 - CLASS 33/1

Class Profile: A sub-class converted for push-pull duties between Bournemouth and Weymouth in 1966/67 and subsequently used with '4-TC' trailer sets and various Southern Region EMUs. When not required on the Weymouth line, they worked other SR freight and passenger work. Latest models have 21-pin DCC decoder interface and switchable LED lighting.

Built by: Birmingham Railway Carriage & Wagon Co., Smethwick

Number converted: 19

Number series: 33101-119

Service Career: 1966 onwards

Region: Southern

Purpose: Mixed traffic/push-pull passenger

Status in 2022: 8 preserved

NEW LIVERIES FOR 2023! BR Class 33/1

No.	Description
3346	BR Green D6580 (small yellow panels)
3350	Fragonset Black 33108*
3365	BR Civil Engineers Grey/Yellow 33118
3366	BR Blue 33117 (DCE stripes) WEATHERED
3367	BR Blue 6525
3368	BR Blue 33101 (white cab windows)
3369	Network SouthEast 33114 Ashford 150*
3370	Cambrian Trains Green 33103*
3371	BR General Grey 33108*

*Locomotives with HI headlights



NEW
VERSIONS
FOR
2023!

21
PIN

DCC
READY

NEM
COUPLERS

WORKING
LIGHTS

SPRUNG
BUFFERS

BRCW TYPE 3 - CLASS 33/2

Class Profile: Narrow-bodied Class 33s built to work over the gauge-restricted Tonbridge-Hastings line. Nicknamed 'Slim Jims', they worked freight and passenger duties and, like the rest of the class, gradually widened their sphere of operation in later years. Our new version depicts the '33/2s' in as-built condition with original exhaust arrangement. Latest models have 21-pin DCC decoder interface and switchable LED lighting.

Built by: Birmingham Railway Carriage & Wagon Co., Smethwick

Number built: 12

Number series: D6586-97, 33201-212

Service Career: 1962 onwards

Region: Southern

Purpose: Mixed traffic

Status in 2022: 1 active/3 preserved

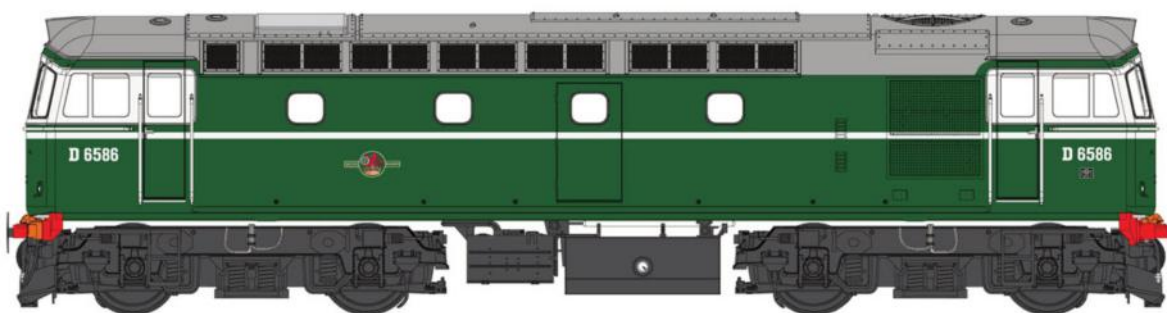
NEW VARIANT! BRCW 'Hastings Gauge' Type 3

No.	Description
3375	BR Green D6586
3376	BR Green D6591 (small yellow panels)
3377	BR Blue D6590 (full yellow ends)
3378	BR Green D6596 (full yellow ends)
3379	BR Green D6594 WEATHERED

NEW LIVERIES! BR Class 33/2

3325	BR General Grey 33201
3338	BR Blue 33202 (orange cantrail line/headlight)
3385	Railfreight Construction 33204
3386	BR Blue 33211 FADED/WEATHERED
3387	Railfreight Distribution 33203
3388	BR Railtour Grey/Yellow 33208 (headlight)

*Locomotives with HI headlights





21 PIN

DCC
READYNEM
COUPLERSWORKING
LIGHTSSPRUNG
BUFFERSINTERIOR
LIGHTS

BR CLASS 35 'HYMEK'

Class Profile: Regarded as the most successful of the Western Region diesel-hydraulic types, these versatile and capable Type 3s worked all kinds of trains from named expresses to local goods and ran across much of southern England, the West Midlands and Wales until the mid-1970s. This new batch of models features an upgraded chassis with 21-pin DCC decoder interface, LED lighting and cab lights.

Built by: Beyer, Peacock Ltd., Gorton Works, Manchester

Number built: 101

Number series: D7000-7100

Service Career: 1961-75

Region: Western/Southern

Purpose: Mixed traffic

Status in 2022: 4 preserved

BR Class 35 'Hymek'

No.	Description
3531	BR Green D7041 (small yellow panels) EX-WORKS CONDITION
3532	BR Green D7094 (full yellow ends) WEATHERED
3533	BR Green D7093 (small yellow panels)
3534	BR Blue 7052 (small yellow panels/ white windows) WEATHERED
3535	BR Blue D7058 (full yellow ends)
3536	BR Blue D7081 (full yellow ends) WEATHERED

NEW
LIVERIES
FOR
2023!

21 PIN

DCC
READYNEM
COUPLERSWORKING
LIGHTSSPRUNG
BUFFERSSOUND
READYINTERIOR
LIGHTS

BR/SULZER TYPE 4 - CLASS 45

Class Profile: This heavyweight Type 4 proved its worth hauling everything from named expresses to unfitted mineral trains. Closely associated with the Midland Main Line and cross-country routes, the class could be seen over a wide area from central Scotland to the west of Cornwall. A huge range of detail variations has been designed into the model, allowing accurate depictions of specific Class 45/0s and 45/1s for the first time. Following the incredible reaction to the initial batch of '45s', a second production run is now being prepared for release in 2023.

Built by: BR Derby Works

Number built: 127

Number series: D11-D137

Service Career: 1961 onwards

Region: All

Purpose: Passenger/mixed traffic

Status in 2022: 11 preserved

NEW LIVERIES FOR 2023!

BR Derby/Sulzer Type 4 - Class 45

VERSION 1 - EARLY CLASS 45/0 WITH SPLIT-CENTRE HEADCODE

No.	Description
45102	BR Economy Green D63 Royal Inniskilling Fusilier (small yellow panel)
45103	BR Blue D50 The King's Shropshire Light Infantry (small yellow panel)
45105	BR Blue 45032 (domino headcodes)

VERSION 3 - CLASS 45/0 WITH SEALED BEAM ENDS

45301	BR Blue 45055 Royal Corps of Transport (red bufferbeams)
45303	BR Blue 97409 'Lytham St Annes' (Tinsley painted names) WEATHERED

VERSION 4 - CLASS 45/1 WITH SEALED BEAM ENDS

45400	BR Blue 45144 Royal Signals
45401	BR Blue 45110 (white body stripe)

VERSION 5 - CLASS 45/1 WITH SEALED BEAM ENDS AND HI HEADLIGHT

45504	BR Blue 45104 The Royal Warwickshire Fusiliers (orange cantrail stripe, black bonnet/cab)
-------	---



**DUE
IN
2023!**

**21
PIN**

**DCC
READY**

**NEM
COUPLERS**

**WORKING
LIGHTS**

**SPRUNG
BUFFERS**

**SOUND
READY**

**INTERIOR
LIGHTS**

BRUSH TYPE 4 - CLASS 47

Class Profile: An all-new OO gauge version of this popular class, which was BR's most numerous main line diesel type. Employed on all kinds of trains from named expresses to unfitted mineral trains, they were built from 1961 onwards to provide BR with a more powerful Type 4 diesel-electric (2,750hp, later de-rated to 2,580hp) that was also lighter and more versatile than its predecessors. Our new model is designed to depict a huge range of detail variations across the class, including different boiler roof panels, radiator grilles, cab front designs, underframe tanks and lighting arrangements. A rolling programme of releases over the coming years will cover all the major liveries, periods and sub-classes with close attention to detail differences.

PLEASE NOTE - All new OO gauge Class 47s will be available 'DCC Ready' or with a factory fitted ESU LOKSOUND V5 DECODER and super-accurate sounds supplied by DCC sound specialist Legomanbiffo.

Built by: Brush Traction, Loughborough/BR Crewe Works

Number built: 512

Number series: D1500-D1999, D1100-11

Service Career: 1962 onwards

Region: All

Purpose: Mixed traffic

Status in 2022: 30 Active/32 preserved

DUE 2023! BRUSH TYPE 4 - CLASS 47

No.	Description
4710	BR two-tone green D1526 (small yellow panel)
4711	BR two-tone green D1969 (full yellow end)
4712	BR Blue 47137 (glazed headcode panel)
4720	BR blue 47316 (plated headcode panels)
4721	BR Large Logo Blue 47450
4722	Railfreight grey 47214 <i>Tinsley Traction Depot</i>
4723	Railfreight Petroleum 47125 <i>Tonnidae</i>
4724	InterCity Executive 47555 <i>The Commonwealth Spirit</i>
4725	Departmental General Grey 47329
4726	Parcels red/grey 47575 <i>City of Hereford</i>

PREMIUM FEATURES. DELIVERED AS STANDARD

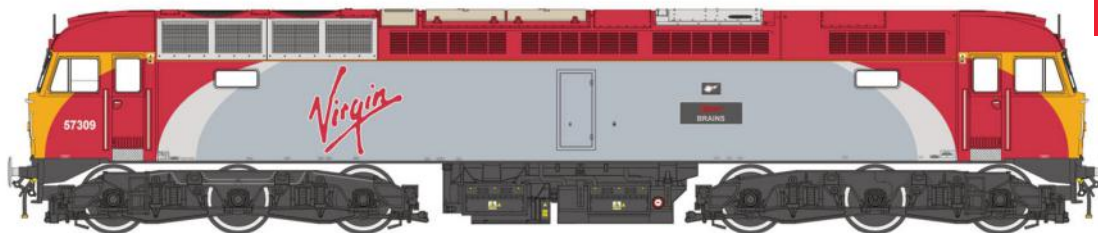
Our most sophisticated and customisable 'OO' locomotive to date will feature a huge range of detail options and desirable features to suit the most demanding of modellers.



Standard Features include:

- Independently switched cab, tail and engine room lights
 - Twin factory-fitted speakers for easy sound installation
 - Factory-fitted sound option on all models
 - Powerful central motor with flywheels for smooth operation
 - Nine boiler roof panel options (Stones/ Spanner/Clayton and plated options)
 - Original or Serck radiator shutters
 - 12+ cab front arrangements with more planned
 - Original, plated headcode, crash repair and cutaway bufferbeam ends
 - With/without boiler water tanks or later extended range fuel tanks
 - Superb bogie and underframe detail
 - Fine etched brass footsteps and lamp irons
 - Extensive bufferbeam detail
 - Cab front or bufferbeam-mounted ETH equipment
 - Optional three-piece miniature snowploughs
- And much more!



21
PINDCC
READYNEM
COUPLERSWORKING
LIGHTSSPRING
BUFFERSSOUND
READYINTERIOR
LIGHTS

CLASS 57

Class Profile: Between 1998 and 2004, 33 Class 47s were re-engineered with General Motors EMD 645-series engines and Class 56 alternators. A first batch for Freightliner was followed by a passenger prototype (Porterbrook 57601) and rescue/passenger locomotives for Virgin West Coast and First Great Western. Over the last two decades, the fleet has been more widely distributed with operators including Advenza Freight, DRS, Network Rail, Locomotive Services Ltd, Rail Operations Group and West Coast Railways. This new batch of models features an upgraded chassis with LED lighting and a 21-pin DCC decoder interface.

Rebuilt by: Brush Traction, Loughborough

Number rebuilt: 33

Number series: 57001-012, 57301-316, 57601-605

Service Career: 1998 onwards

Region: All

Purpose: Mixed traffic

Status in 2022: Active

NEW LIVERIES FOR 2023! CLASS 57

No.	Description
5706	Virgin Trains 57302 <i>Virgil Tracy</i> WEATHERED
5707	Virgin Trains 57309 <i>Brains</i>
5708	First Great Western 'Fag Packet' Green 57603 <i>Tintagel Castle</i>
5710	GWR Green 57605 <i>Totnes Castle</i>
5711	GWR Lined Green 57604 <i>Pendennis Castle</i>
5712	West Coast Railways 'Northern Belle' 57601 <i>Windsor Castle</i>
5713	Network Rail Yellow 57312

DUE
IN
2023!21
PINDCC
READYNEM
COUPLERSWORKING
LIGHTSSPRING
BUFFERSSOUND
READYINTERIOR
LIGHTS

GWR AEC DIESEL RAILCAR

Class Profile: The GWR pioneered the use of diesel railcars for passenger traffic in the 1930s. The most numerous variant was the batch built in 1940-42 with its distinctive angular 'razor edge' bodywork. Employed on branch lines and local services, they were the perfect single vehicle passenger train and continued to provide sterling service until replaced by BR DMUs in the early-1960s. This model features separately switchable headlamps, tail lights, saloon and cab lights and a fully detailed interior.

Built by: AEC/GWR Swindon Works

Number built: 14 + 1

Number series: 19-33, 34

Service Career: 1940-62

Region: GWR/BR Western Region

Purpose: Local and branch line passenger/parcels

Status in 2022: 2 preserved (Nos. 19/22)

NEW VERSION DUE 2023! GWR AEC PARCELS RAILCAR

No.	Description
3490	GWR chocolate/cream No.34 with coat of arms (dark grey roof)
3491	BR 'Express Parcels' Crimson No. 34 (grey roof)
3492	BR 'Express Parcels' Crimson No. 34 (grey roof) WEATHERED

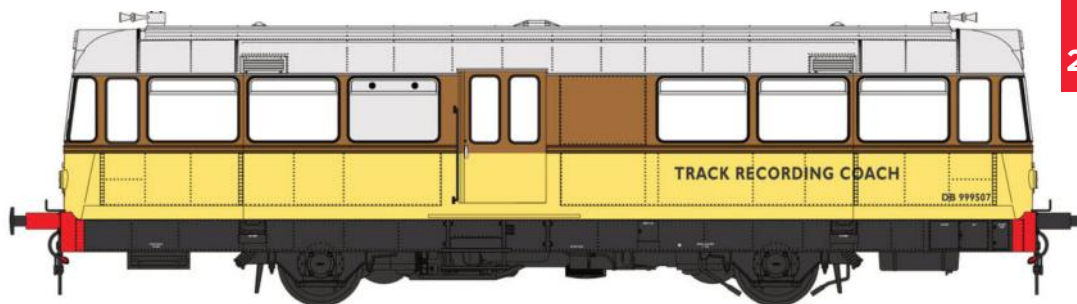
NEW LIVERIES FOR 2023!

GWR AEC PASSENGER RAILCARS

19402	BR crimson/cream W20W (dark grey roof)
19403	BR crimson/cream W21W (white cab roofs)

19404	BR green with speed whiskers W32W (white cab roofs)
19405	BR green with speed whiskers W26W (dark grey roof)
19406	GWR chocolate/cream No. 23 with monogram (white roof)*
19407	BR crimson/cream W20W (grey roof) WEATHERED*
19408	GWR chocolate/cream No.22 with monogram (grey roof)*
19409	BR green with speed whiskers W26W (grey roof)*

*New liveries for 2022

DUE
IN
2023!21
PINDCC
READYWORKING
LIGHTSSPRUNG
BUFFERSINTERIOR
LIGHTS

WAGGON & MASCHINENBAU DIESEL RAILBUS

Class Profile: Inspired by their widespread and successful use on rural lines in Germany, BR tested a series of lightweight railbus designs from the late-1950s. Most were built by British coachbuilders, but five vehicles for the Eastern Region were imported from Germany. Although largely successful in increasing passenger traffic, the railbuses were often unreliable and made redundant when many of the lines they were intended to operate were closed during the Beeching cuts of the 1960s.

Built by: Waggon u. Maschinenbau, Donaueschingen, Germany

Number built: 5

Service Career: 1958-67

Region: Eastern

Purpose: Branch line passenger

Status in 2022: 4 vehicles preserved

NEW LIVERIES FOR 2023! W&M Diesel Railbus

No.	Description
8707	BR Green E79963 (speed whiskers)
8708	BR Green E79961 (larger yellow panels)
8709	BR Green E79964 (speed whiskers) WEATHERED
8711	BR Green E79960 (small yellow panels) WEATHERED
8712	Railway Technical Centre red/blue 'Laboratory 20'
8713	Worth Valley red/grey/black No. 64
8714	BR Brown/Yellow Track Recording Car DB999507

DUE
IN
2023!21
PINDCC
READYNEM
COUPLERSWORKING
LIGHTSSPRUNG
BUFFERSSOUND
READYINTERIOR
LIGHTS

NEW! BRCW CLASS 104 DMU

Class Profile: One of the most numerous designs of diesel railcar introduced by BR in the second half of the 1950s. Delivered to the LMR in the north-west of England and the North Eastern Region in Yorkshire and the north-east of England, they were used on a wide range of duties, most famously to Buxton and Blackpool. In later years, a few sets migrated to East Anglia, Scotland and London. Our models will depict standard LMR three-car and NER two-car 'power-trailer' sets and later two-car 'power twin' sets. Among the many neatly designed features, discreet inter-car connections will allow lighting and sound functions to be controlled by one decoder. All DMBS/DMCL vehicles will feature factory-fitted speakers.

Built by: Birmingham Railway Carriage & Wagon Co., Smethwick

Number built: 302 vehicles

Formations: 2/3/4-car

Service Career: 1957-93

Region: London Midland/NER/Scottish/NSE

Purpose: Secondary/Regional passenger

Status in 2021: 13 vehicles preserved

Features: Factory fitted speakers, electrical connection between cars, magnetic couplers, full interior detail

NEW FOR 2023! BRCW CLASS 104 DMU

No.	Proposed Liveries
1450	BR early green with Lion & Wheel emblem M50422+M59134+M50426
1451	BR green with speed whiskers & Coaching Stock roundel M50478+M59186+M50530
1452	BR green E50598+E56189 (small yellow warning panels)
1453	BR Blue 3-car M50436+M59141+M50488 (full yellow ends/headcode panel)
1454	BR Blue with 'Blackpool' white stripe M50472+M59180+M50524
1455	BR Blue M53421+M53529 with NSE flash/white cab roof WEATHERED
1456	ScotRail 'Mexican Bean' red/white SC53424+SC53434
1457	BR Blue/Grey 'BX487' M53424+M59207+M53434
1458	Revised Network SouthEast 'L701' 53437+53479



NEW
LIVERIES
FOR
2023!

21
PIN

DCC
READY

NEM
COUPLERS

WORKING
LIGHTS

SPRING
BUFFERS

SOUND
READY

BR 'AL6' - CLASS 86/0

Class Profile: BR's standard 25kV AC electric locomotive of the late-1960s, developed using experience gained with the earlier 'AL1' to 'AL5' classes. Deployed on many duties from 100mph express passenger trains to fast freight, parcels and mail traffic, a handful of '86s' remain in use today both in the UK and overseas. This variant looks back at the as-built 'AL6' machines and Class 86/0s of the 1965-80 period and features a number of improvements over our previous Class 86s.

Built by: BR Doncaster Works/Vulcan Foundry

Number built: 100

Number series: E3100-99, 86001-048

Service Career: 1965 onwards

Region: London Midland/Scottish

Purpose: Mixed traffic

Status in 2022: 19 active in UK, plus others exported to Hungary and Bulgaria

BR 'AL6' - CLASS 86/0 - 1965-80

No.	Description
8651	BR blue E3114 with lion and wheel emblem (small yellow panel)
8652	BR blue E3178 (full yellow end)
8653	BR Rail Blue E3146 with white cab roof (full yellow end)
8654	BR Rail Blue E3134 (full yellow end)
8655	BR Rail Blue 86036 (full yellow end, orange cantrail stripe)
8656	BR Rail Blue 86034 (full yellow end) WEATHERED
8657	BR Blue E3156*
8658	BR Blue E3101 (small yellow panel/red buffer-beams)*
8659	BR Rail Blue 86011 (orange cantrail line)*



NEW
LIVERIES
FOR
2023!

21
PIN

DCC
READY

NEM
COUPLERS

WORKING
LIGHTS

SPRING
BUFFERS

SOUND
READY

BR CLASS 86/4

Class Profile: BR's standard 25kV AC electric locomotive of the late-1960s, developed using experience gained with the earlier 'AL1' to 'AL5' classes. A handful of '86s' remain in use today both in the UK and overseas. This popular variant features a number of improvements over our previous Class 86s, including separately switchable tail lights in DCC mode. It focuses on the mixed traffic '86/4' and freight-only '86/6' sub-classes modified from the mid-1980s onwards. Models are supplied with either a Faiveley (*) or Brecknell Willis high-speed (+) pantograph.

Built by: BR Doncaster Works/Vulcan Foundry

Number built: 100

Number series: 86401-439

Service Career: 1965 onwards

Region: London Midland/Eastern/Scottish

Purpose: Mixed traffic

Status in 2022: 1 active in UK, plus others exported to Hungary and Bulgaria

BR CLASS 86/4 & 86/6 - MID-1980s ONWARDS

No.	Description
8640	InterCity Executive 86404+
8641	Railfreight Distribution grey 86634 <i>University of London</i> *
8642	Rail express systems red/grey 86416*
8643	BR retro blue 86426/E3195*
8644	Railfreight Distribution European grey 86622*
8645	Caledonian Sleeper 86401 <i>Mons Meg</i> +
8646	Freightliner green/yellow 86609*
8661	InterCity Mainline 86417 <i>The Kingsman</i> *

NEW
VERSION
FOR
2024!21
PINDCC
READYNEM
COUPLERSWORKING
LIGHTSSPRUNG
BUFFERSSOUND
READY

BR CLASS 86/2

Class Profile: BR's standard 25kV AC electric locomotive of the late-1960s, developed using experience gained with the earlier 'AL1' to 'AL5' classes. A handful of '86s' remain in use today both in the UK and overseas. This latest variant features a number of improvements over our previous Class 86s, including separately switchable tail lights in DCC mode. It focuses on the previously overlooked mixed traffic '86/4' and freight-only '86/6' sub-classes modified from the mid-1980s onwards. Models are supplied with either a Faiveley (*) or Brecknell Willis high-speed (+) pantograph.

Built by: BR Doncaster Works/Vulcan Foundry

Number built: 100 (57 modified as Class 86/2)

Number series: 86204-261

Service Career: 1965 onwards

Region: London Midland/Eastern/Scottish

Purpose: Mixed traffic

Status in 2022: 1 active in UK, plus others exported to Hungary and Bulgaria

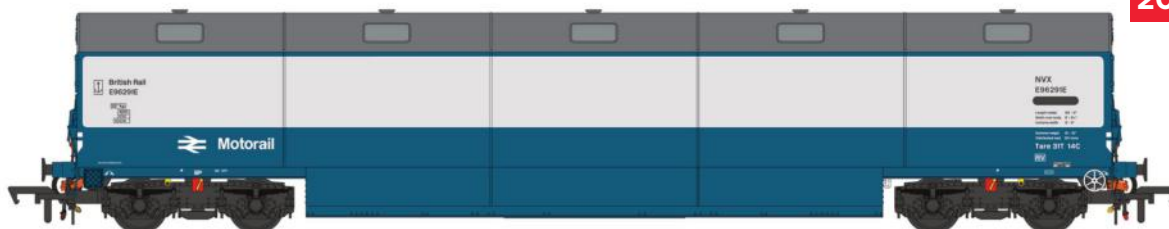
NEW VERSION FOR 2024!

BR Class 86/2 – Late-1970s onwards

BR CLASS 86/2 - LATE-1970s ONWARDS

No.	Description
8621	BR Rail Blue 86253 <i>The Manchester Guardian</i> [^]
8623	InterCity Executive 86204 <i>City of Carlisle</i> [^]
8630	InterCity Swift 86238 <i>European Community</i> [^]
8631	Virgin Trains 86240 <i>Bishop Eric Treacy</i> ⁺
8633	Electric Blue 86259 <i>Les Ross</i> [^]
8634	EWS Red/Gold 86261 <i>Rail Charter Partnership</i> [^]
8635	Colas Railfreight 86701 <i>Orion</i> ⁺
8636	Anglia Railways 86260 [^]

[^] Faiveley pantograph ⁺ Brecknell Willis pantograph

NEW
TOOLING
FOR
2023!NEM
COUPLERS

BR NEWTON CHAMBERS CAR CARRIER

Service Career: 1961-87

Region: Eastern/Scottish/Western

Purpose: Motorail

BR TOPS code: TCV/NVV/NVX

Use with: BR Class 27/45/47/52/55/86, ex-LNER 'Pacific' steam locomotives

Status in 2022: Extinct

Features: Early/late rooflight arrangement, steam/dual heating parts, vacuum/dual braking parts, fine bogie/underframe detail, weathered option, authentic livery differences between vehicles in each pack.

NEW FOR 2023! BR NEWTON CHAMBERS CAR CARRIER

No.	Description
9620	BR Lined Maroon Pack 1: E96288/289/290E
9621	BR Lined Maroon Pack 2: E96286/293/297E
9622	BR Lined Maroon Pack 1: E96287/291/294E
9623	BR Blue/Grey Pack 1: TCV E96290/297/298E
9624	BR Blue/Grey Pack 2: NVX E96291/294/299E
9625	BR Blue/Grey Pack 3: NVV E96288/289/293E WEATHERED

'OO' WAGONS



CARGOWAGGON IWB BOGIE VAN

Number Built: 120
Service Career: 1979-80 onwards
Region: All
Purpose: International palletised merchandise/barrier wagons for new rolling stock
BR TOPS code: IWB
Use with: BR Class 25/26/27/33/45/47/86

CARGOWAGGON IWB BOGIE VAN

No.	Description
5022	Colas/Tarmac grey
5023	Colas/Tarmac grey (alternative number)
5024	Blue Circle Cement yellow
5025	Blue Circle Cement yellow WEATHERED
5026	Silver/blue
5027	CARGOWAGGON slate blue
5029	CARGOWAGGON silver/blue (new number) WEATHERED



CARGOWAGGON IGA BOGIE FLAT

Service Career: 1979 onwards
Region: All
Purpose: International merchandise traffic
BR TOPS code: IGA/IGB
Use with: BR Class 25/26/27/33/45/47/86

*Twin pack #5115 is intended for use with barrier/translator vans #5020, both types being used in connection with the delivery of new trains to Britain via the Channel Tunnel.

CARGOWAGGON IGA BOGIE FLAT

No.	Description
5105	Corus Rail blue
5109	CARGOWAGGON blue (new number)
5110	CARGOWAGGON blue (alt number)
5111	CARGOWAGGON blue WEATHERED
5112	CARGOWAGGON blue (with pipe load)
5113	CARGOWAGGON blue (with pipe load) WEATHERED
5114	CARGOWAGGON blue (with timber load) WEATHERED
5115	RailAdventure grey barrier wagons with concrete panel load* TWIN PACK





O GAUGE

LOCOMOTIVES AND
ROLLING STOCK



'O' GAUGE DIESELS

21
PINDCC
READYSOUND
READYWORKING
LIGHTSSPRUNG
BUFFERSINTERIOR
LIGHTSNEM
COUPLERS

GWR AEC DIESEL RAILCAR

Class Profile: The GWR pioneered the use of diesel railcars in the 1930s but the most numerous variant was built in 1940-42 with distinctive 'razor edge' bodywork. Employed on branch lines and local services, they were the perfect single vehicle train and continued to provide sterling service until replaced by BR DMUs in the early-1960s.

Built by: AEC/GWR Swindon Works

Number built: 14

Number series: 19-33

Service Career: 1940-62

Region: GWR/BR Western Region

Purpose: Local and branch line passenger

Status in 2022: 2 preserved (Nos. 19/22)

GWR AEC DIESEL RAILCAR

No.	Description
1900	GWR chocolate/cream No.22 with monogram (white roof)
1901	GWR post-war chocolate/cream No.29 (dark grey roof)
1902	BR crimson/cream W20W (dark grey roof)
1903	BR crimson/cream W21W (white cab roofs)
1904	BR green with speed whiskers W32W (white cab roofs)
1905	BR green with speed whiskers W26W (dark grey roof)

DUE
IN
2023

Hand-decorated sample

21
PINDCC
READYSOUND
READYWORKING
LIGHTSNEM
COUPLERSINTERIOR
LIGHTS

BR/YORKSHIRE CLASS 02 0-4-0DH

Class Profile: Built to replace the legendary Lancashire & Yorkshire Railway 0-4-OST 'Pugs', this class of 20 short-wheelbase 0-4-0 diesel-hydraulic locomotives was based on a standard industrial design. Delivered to depots in the north-west of England for shunting tightly-curved lines around docks and goods depots, many were sold into industry in the late-1960s and subsequently preserved to enjoy a third life at heritage railways.

Built by: Yorkshire Engine Co., Sheffield

Number built: 20 (BR), 50 (industrial)

Number series: D2850-69, 02001/003/004

Service Career: 1960-75 (BR),

late-1950s to 1990s (industrial)

Region: London Midland/industrial

Purpose: Shunting on tightly curved dock/factory lines

Status in 2022: Seven preserved (D2853/54/58/60/66-68)

DUE 2023! YORKSHIRE ENGINE CO. 0-4-0DH

No.	Description
2870	BR green (wasp stripes) unnumbered
2871	BR green (wasp stripes) D2860
2872	BR green 02004 (no BR logo) WEATHERED
2873	BR blue 02005
2874	Redland Khaki 'Diane'
2875	Industrial yellow AY1061
2876	National Coal Board pale blue No. ND3
2877	Industrial plain green 'SAM'

21
PINDCC
READYSOUND
READYWORKING
LIGHTSSPRUNG
BUFFERS

BR CLASS 03

Class Profile: BR's standard small diesel shunter was seen all over England and Wales from the late-1950s, often being used to shunt goods yards or acting as station pilots. They became closely associated with several key locations, including Newcastle, York, Norwich, Birkenhead Docks and the Isle of Wight. Class 03s also saw widespread industrial use in the 1990s and a small number were even exported to Belgium and Italy. Our models feature either conical or 'flowerpot' exhausts.

Built by: BR Swindon/Doncaster Works

Number built: 230

Number series: D2000-2199, D2370-99

(later 03004-199, 03370-399)

Service Career: 1957-2008

Region: All except Scottish Region

Purpose: Shunting and local goods

Status in 2022: 56 preserved

BR CLASS 03 0-6-ODM

No.	Description
2051	BR green D2011**
2052	BR green unnumbered*
2058	Industrial yellow unnumbered**
2059	Industrial dark blue/yellow unnumbered*
2070	BR blue 2096*
2073	BR blue unnumbered**

* Flowerpot style chimney ** Conical chimney

L
PINDCC
READYSOUND
READYWORKING
LIGHTSSPRUNG
BUFFERSSMOKE
READY

BR/CLAYTON TYPE 1 - CLASS 17

Class Profile: Experience with the early Type 1 diesels revealed a need for better visibility for loco crews and the result was the Clayton Type 1 with its characteristic centre cab. Unfortunately, the twin-engined design proved to be unreliable and despite 117 examples being built, the class managed less than a decade in service. This model is designed for 'plug-and-play' installation of an ESU LokSound 'L' decoder and an ESU smoke unit.

Built by: Clayton/Beyer Peacock

Number built: 117

Number series: D8500-D8616

Service Career: 1962-71 (BR), 1972-82 (industrial)

Region: Scottish, Eastern, North Eastern

Purpose: Light goods and passenger

Status in 2022: One preserved (D8568)

BR/CLAYTON TYPE 1 - CLASS 17

No.	Description
1750	BR green unnumbered (small yellow panel)
1751	BR green unnumbered (full yellow end)
1753	BR green D8607 (small yellow panel) WEATHERED



NEW
LIVERIES
FOR
2023!

DCC
READY

WORKING
LIGHTS

NEM
COUPLERS

SOUND
READY

SPRUNG
BUFFERS

BR/EE TYPE 1 - CLASS 20

Class Profile: Probably the most successful of the BR 'Pilot Scheme' designs of the late-1950s, the '20s' have given six decades of sterling service and a small number are still earning a living on the network today. Built for lighter goods work, including cross-London trip freights, they also proved to be extremely useful for heavier traffic when used in pairs. Reliable, robust and widely used – a true classic.

Built by: English Electric, Vulcan Foundry

Number built: 228

Number series: D8000-199, D8300-27

Service Career: 1957 onwards

Region: All except Western

Purpose: Freight

Status in 2022: 23 Active/22 preserved

NEW LIVERIES FOR 2023! EE Type 1/BR Class 20

No.	Description
2000	BR Green Unnumbered (small yellow panel)^
2001	BR Blue Unnumbered (full yellow ends)^
2003	BR Tinsley Railtour Green Unnumbered^
2004	BR Blue 20042 (DCE cabside stripes) WEATHERED ^
2005	BR Green 20023 (full yellow ends) WEATHERED ^
2013	BR Blue Unnumbered (domino headcodes)+
2016	BR Thornaby Blue/Red/White Unnumbered+
2017	BR Green D8132 (small yellow panels)+

^Disc headcodes +Centre headcode panels



Hand-decorated sample

XL
PIN

DCC
READY

SOUND
READY

SPRUNG
BUFFERS

INTERIOR
LIGHTS

SMOKE
READY

WORKING
LIGHTS

BRCW TYPE 2 - CLASS 26/1

Class Profile: One of the most successful and long-lived BR 'Pilot Scheme' designs; the initial 20 locomotives were followed by 26 more (Class 26/1) and all were concentrated on the Scottish Region from the 1960s. This all-new model has been designed to offer a much wider choice of detail variations. Features include separately switched exterior, cab and engine room lighting, the famous Inverness-based locomotives with twin car-style headlights, dual-braked machines with air tank cradle, two styles of radio pod, two designs of cab door and early models with a tablet catcher recess.

Built by: Birmingham Railway Carriage & Wagon Co.,

Number built: 26

Number series: D5320-46 (26021-046)

Service Career: 1959-93

Region: Scottish

Purpose: Mixed traffic

Status in 2022: 13 preserved (Class 26/0 - 26001/002/004/007/010/011/014, Class 26/1 - 26024/025/035/038/040/043)

BRCW TYPE 2 - CLASS 26

No.	Description
2675	BR green (with tablet catcher recess)
2676	BR green (small yellow panels)
2677	BR early blue (full yellow ends)
2678	BR blue with Inverness twin car headlights
2679	BR blue 26027 WEATHERED

V3 MODELS FOR MID-1980S ONWARDS

No.	Description
2680	BR blue unnumbered
2681	Railfreight 'Red Stripe' (white cantrail stripe)
2682	BR Civil Engineers grey/yellow
2683	Railfreight 'Red Stripe' 26025 (orange cantrail stripe) WEATHERED



BRCW TYPE 2 - CLASS 27

Class Profile: A more powerful development of Class 26 with a 1,250hp engine, GEC traction motors and four-character headcode panel. Initially distributed across the Midland, North Eastern and Scottish Regions, from the late-1960s they were concentrated in Scotland and continued in service until 1987. These superb new models offer 'plug-and-play' DCC capability, two alternative designs of cab steps, boiler-fitted or non-boiler locomotives plus separately switched exterior, cab and engine room interior lighting.

Built by: Birmingham Railway Carriage & Wagon Co.,
Number built: 68
Number series: D5347-46 (27001-066, 27101-124)
Service Career: 1961-87
Region: LMR, North Eastern, Scottish
Purpose: Mixed traffic
Status in 2022: 8 preserved
 (27001/005/007/024/050/056/059/066)

BRCW TYPE 2 - CLASS 27

No.	Description
2770	BR green (small yellow panel)
2771	BR plain green 5370 (full yellow ends) WEATHERED
2772	BR green/cream (full yellow ends)
2773	BR blue (full yellow ends/headcodes)
2774	BR blue (full yellow ends/dominoes)
2775	BR two-tone green D5382 (small yellow panels)
2776	BR early blue D5389 (small yellow panels)
2777	BR blue 27032 (Inverness Stags) WEATHERED



REFURBISHED BR CLASS 31

Class Profile: One of the great success stories from BR's 'Pilot Scheme' of the late-1950s. More than 60 years later these rugged and dependable Type 2s can still be seen on the national network and on heritage railways across the country. These refurbished Class 31/1s and 31/4s are suitable for the mid-1980s onwards working with a wide variety of freight, passenger and departmental stock.

Built by: Brush Traction, Loughborough
Number built: 263
Number series: D5500-D5862
Service Career: Mid-1980s onwards (refurbished locos)
Region: Eastern/London Midland/Western
Purpose: Mixed traffic
Status in 2022: 1 Active/26 preserved

VERSION 2 - REFURBISHED CLASS 31/1

No.	Description
3120	Railfreight grey/yellow 31296 <i>Amwlch Freighter/Tren Nwyddau Amwlch</i> WEATHERED
3121	Railfreight 'Red Stripe' grey
3122	Railfreight Trainload Freight grey unbranded
3123	BR Civil Engineers grey/yellow

VERSION 3 - REFURBISHED CLASS 31/4 WITH HEADLIGHT

No.	Description
3141	InterCity Mainline
3142	Regional Railways
3143	EWS red/gold 31466
3144	Network Rail yellow

DCC
READYWORKING
LIGHTSSOUND
READYSPRUNG
BUFFERSNEM
COUPLERS

BRCW TYPE 3 - CLASS 33/0

Class Profile: These capable and versatile mixed traffic machines were built for the Southern Region, but ventured further afield from their earliest days. Class 33/0 is the standard variant employed on freight and passenger work both singly and in pairs. This re-tooled and updated model is available in both 1960s to 1980s condition and with high intensity headlights fitted from the late-1980s onwards.

Built by: Birmingham Railway Carriage & Wagon Co.,

Number built: 86

Number series: D6500-85 (33001-065)

Service Career: 1962 onwards

Region: Southern

Purpose: Mixed traffic

Status in 2022: 4 Active/15 preserved

VERSION 2 - 1960s TO 1980s

No.	Description
3395	BR green (full yellow ends)

Version 3 - 1990s TO 2000s with HI headlight

3402	EWS red/gold 33030
3403	Network SouthEast 33035
3404	DRS blue
3405	Railfreight sector three-tone grey
3406	BR green 33008/D6508 <i>Eastleigh</i> (small yellow panel)

DCC
READYWORKING
LIGHTSSPRUNG
BUFFERSSOUND
READY

BR CLASS 35 'HYMEK'

Class Profile: Regarded as the most successful of the Western Region diesel-hydraulic types, these versatile and capable Type 3s worked all kinds of trains from named expresses to local goods and ran across much of southern England, the West Midlands and Wales until the mid-1970s. Our updated model features a number of improvements over earlier releases, including LED lighting, a DCC friendly chassis, better wheels and less weight.

Built by: Beyer, Peacock Ltd., Gorton Works, Manchester

Number built: 101

Number series: D7000-7100

Service Career: 1961-75

Region: Western/Southern

Purpose: Mixed traffic

Status in 2022: 4 preserved (D7017/18/29/76)

BR CLASS 35 'HYMEK'

No.	Description
3585	BR green
3587	BR green (full yellow end)

**NEW
VERSION!**
WITH CUTAWAY
BUFFERBEAMS

**DUE
IN
2023**

O GAUGE



Hand-decorated sample

- XL
PIN**
- DCC
READY**
- SOUND
READY**
- SPRUNG
BUFFERS**
- INTERIOR
LIGHTS**
- SMOKE
READY**
- WORKING
LIGHTS**

NEW! BR SPLIT HEADCODE CLASS 37/0

Class Profile: In response to customer demand, this latest variant of our O gauge Class 37/0 depicts the original 118 locomotives with split headcode panels and post-1970s cutaway bufferbeam cowlings. Our updated model features a number of improvements over earlier releases, including sharper detail, a plug-and-play DCC interface, switchable interior and exterior lighting and a wider choice of detail options. Models will be available with several nose end arrangements, with or without steam heating boiler ports, high-intensity headlights and with either cast or fabricated bogies according to livery and period.

Built by: English Electric Vulcan Foundry/BR Darlington Works

Number built: 119

Number series: D6700-6818, 37001-119

Service Career: 1960 onwards

Region: All

Purpose: Mixed traffic

Status in 2022: 5 active/10 preserved

DUE IN 2023! CLASS 37/0 (SPLIT HEADCODE)

No.	Description
3720	BR Blue*
3721	BR Large Logo Blue*
3722	BR Civil Engineers grey/yellow +
3724	BR Green 37350/D6700 (full yellow ends) +
3725	Railfreight Sector grey (unbranded) +
3726	EWS Red/Gold +
3727	DRS Blue (early) +
3728	Railfreight 'Red Stripe' 37008 WEATHERED +

* Model with steam heating boiler + Model with HI headlight

**UPDATE: FULL DETAILS OF THE LOCOMOTIVE
NUMBERS AND LIVERIES FOR THE CENTRE
HEADCODE CLASS 37/0s WILL BE CONFIRMED
DURING 2023.**

**DUE
IN
2024**





BR CLASS 37/4

Class Profile: A refurbished variant of our popular Class 37 depicting the sub-class fitted with Electric Train Heating (ETH) equipment as part of BR's mid-1980s life extension programme. Initially based at Eastfield and Inverness in Scotland, and at Cardiff Canton for Welsh passenger duties, the '37/4s' became associated with some of Britain's most scenic railways and have always attracted a large enthusiast following.

Built by: English Electric Vulcan Foundry, Newton-le-Willows

Number converted: 31

Number series: 37401-431

Service Career: 1985 onwards

Region: All

Purpose: Passenger/mixed traffic

Status in 2022: 11 active

BR CLASS 37/4

No.	Description
3741	BR Large Logo blue
3745	Trainload Freight grey unbranded
3753	Railfreight Petroleum 37418 <i>Pectinidae</i>
3757	Railfreight Distribution 37413 <i>Loch Eil Outward Bound</i>



EE TYPE 4 - BR CLASS 40

Class Profile: A new body variant of our popular Class 40 depicting the later locomotives built with a single central headcode panel, rather than the disc headcodes (D200-324) and split headcodes (D325-344) used previously. These models also feature an improved DCC interface and LED lights.

Built by: English Electric Vulcan Foundry/RSH Darlington

Number built: 55 (of a total of 200, D200-399)

Number series: D345-399, 40145-199 (centre headcode)

Service Career: 1960-85

Region: Eastern/Scottish/London Midland

Purpose: Mixed traffic

Status in 2022: Seven preserved (D200/212/213/306/318/335/345)

EE TYPE 4/BR CLASS 40 (CENTRE HEADCODE)

No.	Description
4060	BR green
4061	BR green (small yellow panel)
4062	BR green (full yellow end)
4063	BR blue (full yellow end & headcodes)

NEW
VERSION
FOR
2023!

Hand-decorated sample



BR CLASS 45

Class Profile: This heavyweight Type 4 proved its worth over almost three decades hauling everything from named expresses to unfitted mineral trains. Closely associated with the Midland Main Line and cross-country routes, the class could be seen over a wide area from central Scotland to the far west of Cornwall. This new model builds on previous releases, featuring late-condition locomotives with sealed beam nose ends and Class 45/1s, modified with electric train heating (ETH) and HI headlights.

Built by: BR Derby Works
Number built: 127
Number series: 45001-077, 45101-150
Service Career: Mid-1970s to 1988
Region: All except Southern Region
Purpose: Mixed traffic
Status in 2022: 1 Active/11 preserved

NEW FOR 2023! BR DERBY/SULZER TYPE 4 - CLASS 45 VERSION 2 - CLASS 45/0 WITH SEALED BEAM ENDS

No.	Description
4520	BR Blue Unnumbered
4521	BR Blue 45004 <i>Royal Irish Fusiler</i>
4522	BR Blue 45033 'Sirius' (Tinsley painted names) WEATHERED

VERSION 3 - ETH CLASS 45/1 WITH SEALED BEAM ENDS

4525	BR Blue Unnumbered
4526	BR Blue 45144 <i>Royal Signals</i>

VERSION 4 - ETH CLASS 45/1 WITH SEALED BEAM ENDS AND HI HEADLIGHT

4527	BR Blue Unnumbered
4528	BR Blue 45110 'Medusa' (Tinsley painted names)
4529	BR Railtour green 45106 (full yellow ends)



BRUSH TYPE 4 - BR CLASS 47

Class Profile: An all-new version of this popular class, which was BR's most numerous main line diesel type. Employed on all kinds of trains from named expresses to unfitted mineral trains, they were built from 1961 onwards to provide BR with a more powerful Type 4 diesel-electric. Our new model depicts both 1960s/70s condition locomotives and 1980s to 2000s machines with later modifications.

Built by: Brush Traction, Loughborough/BR Crewe Works
Number built: 512
Number series: D1500-D1999, D1100-11
Service Career: 1962 onwards
Region: All
Purpose: Passenger/mixed traffic
Status in 2022: 30 active/32 preserved

VERSION 2 - 1960s/70s

No.	Description
4850	BR two-tone green (small yellow panel) 47/0
4851	BR two-tone green (full yellow end) 47/0
4852	BR blue (full yellow end) 47/0

VERSION 3 - 1980s/90s

4860	BR blue (full yellow end) 47/4
4861	BR large logo blue 47/4
4862	Railfreight 'Red Stripe' grey
4863	Railfreight sector three-tone grey unbranded
4864	BR engineers grey/yellow
4865	BR Parcels Sector red/grey 47/4
4866	InterCity Executive 47/4
4867	Network SouthEast (original version) 47/4

DCC
READYWORKING
LIGHTSSPRUNG
BUFFERSSOUND
READYINTERIOR
LIGHTS

BR CLASS 50

Class Profile: A class of 50 high-power Type 4 diesels built to accelerate Anglo-Scottish expresses during the electrification of the West Coast Main Line. Famously used in pairs prior to the start of electric services, the class was transferred to the Western Region in the mid-1970s to replace the 'Western' diesel-hydraulics. Our model depicts the class after refurbishment in the early-1980s.

Built by: English Electric, Vulcan Foundry

Number built: 50

Number series: D400-49, 50001-050

Service Career: 1967-93

Region: London Midland/Scottish (1967-76), Western/Southern (1974-93)

Purpose: Passenger/mixed traffic

Status in 2022: 4 active/18 preserved

BR/EE CLASS 50

No.	Description
4020	BR blue
4021	BR large logo blue
4029	BR Large Logo Blue with black roof
4030	BR Large Logo Blue 50036 <i>Victorious</i> WEATHERED
4034	Hanson & Hall Grey 50008 <i>Thunderer</i>
4037	BR Large Logo Blue 50046 <i>Ajax</i> (Black Roof)
4038	Network SouthEast 50032 <i>Courageous</i> WEATHERED
4039	Revised Network SouthEast dark blue 50033 <i>Glorious</i>

NEW
LIVERIES FOR
2023!

DCC
READYWORKING
LIGHTSSPRUNG
BUFFERSSOUND
READYNEM
COUPLERS

BR CLASS 52 'WESTERN'

Class Profile: Regarded as one of the most stylish of BR diesel designs, the 'Westerns' were built to provide the Western Region with a powerful Type 4 machine to haul its most important expresses to the West Country, South Wales and the West Midlands. With their thoroughbred looks, distinctive twin Maybach sound and excellent performance they retain a large enthusiast following decades after they were replaced by HSTs and Class 50s.

Built by: BR Swindon/Crewe Works

Number built: 74

Number series: D1000-73

Service Career: 1963-77

Region: Western

Purpose: Passenger/mixed traffic

Status in 2022: 7 preserved (D1010/13/15/23/41/48/62)

NEW LIVERIES FOR 2023! BR CLASS 52 'WESTERN'

No.	Description
5291	BR Blue Unnumbered (full yellow ends)
5292	BR Maroon D1001 <i>Western Pathfinder</i> (yellow bufferbeams)
5293	BR Green D1038 <i>Western Sovereign</i> (small yellow panel)
5294	BR Blue D1031 <i>Western Rifleman</i> (full yellow ends) WEATHERED
5295	BR Golden Ochre D1015 <i>Western Champion</i> (early-2000s livery)
5296	BR Desert Sand D1000 <i>Western Enterprise</i> (small yellow panels)

DUE
IN
2023!XL
PINDCC
READYWORKING
LIGHTSINTERIOR
LIGHTSSPRUNG
BUFFERSSOUND
READYSMOKE
READY

BR CLASS 55 'DELTAIC'

Class Profile: Developed from English Electric's astonishing 1955 prototype, the 22 production 'Deltics' used powerful but lightweight Napier gunboat engines to deliver a far greater power to weight ratio than any other diesel locomotive of their time. The result was a worthy successor to the legendary LNER Pacifics and their performances on the East Coast Main Line over a 20-year career made them equally iconic. Marking the 40th anniversary of their retirement in January 1982, our retooled model is designed to accommodate two large 'earth mover' speakers and two smoke units for that unforgettable 'Deltic' effect. Other new features include a plug-and-play DCC interface, interior detail and lighting and authentic detail variations for later period Class 55s.

Built by: English Electric, Vulcan Foundry

Number built: 22

Number series: D9000-21, 55001-022

Service Career: 1961-82

Region: Eastern/Scottish

Purpose: Express passenger

Status in 2022: 6 preserved (D9000/02/09/15/16/19)

NEW FOR 2023! EE/BR CLASS 55 1976-82

No.	Description
5520	BR Blue 55003 <i>Meld</i>
5521	BR Blue unnumbered
5522	BR Blue 55015 <i>Tulyar</i> (white cabs)
5523	BR Blue unnumbered (white cabs)
5524	BR Green 55002 <i>King's Own Yorkshire Light Infantry</i> (full yellow ends)
5525	BR Railtour Blue 55022 <i>Royal Scots Grey</i>
5526	BR Blue 55021 <i>Argyll & Sutherland Highlander</i> WEATHERED

PRESERVED CLASS 55 WITH HI HEADLIGHT

No.	Description
5530	BR Green D9000 <i>Royal Scots Grey</i> (small yellow warning panel)
5531	BR Blue 55019 <i>Royal Highland Fusilier</i>
5532	BR Blue unnumbered (white cabs)



HORNBY
MODEL RAILWAY
Awards
2022

DCC
READYWORKING
LIGHTSSPRUNG
BUFFERSSOUND
READYINTERIOR
LIGHTSSMOKE
READY

BR CLASS 56

Class Profile: The first of BR's heavy Type 5 freight diesels, introduced to cope with an increase in coal traffic after the 1973 oil crisis. The first 30 were built by Electroputere in Romania under sub-contract from Brush, while the rest were constructed by BREL at Doncaster (56031-115) and Crewe (56116-135). Although they were retired by EWS in 2003, a number have been reactivated for use by freight companies such as Colas, UK Rail Leasing and, soon, GB Railfreight. Our version is based on the later Doncaster and Crewe variant (56056-135).

Built by: BR Doncaster/Crewe Works

Number built: 135

Number series: 56001-135

Service Career: 1976 onwards

Region: All

Purpose: Heavy freight

Status in 2022: 17 active/
3 preserved

BR CLASS 56

No.	Description
5602	Railfreight large logo grey
5603	Railfreight 'Red Stripe' grey
5604	Railfreight three-tone grey unbranded
5605	Railfreight Coal Sector 56101 <i>Mutual Improvement</i> WEATHERED
5606	Railfreight Construction Sector 56110 <i>Croft</i>
5607	Loadhaul black/orange



Hand-decorated sample



NEW! BR CLASS 58

Class Profile: Designed with one eye on the export market, the 50 Class 58s were the last diesel locomotives built by British Rail. For much of their life, they were employed on intensive diagrams ferrying coal between Midlands collieries and power stations alongside the Class 56s. From the mid-1990s, their range of duties expanded and they were largely focused in the south-east of England for Mainline and later EWS. Replaced by Class 66s in the late-1990s and early-2000s, many were exported to France, Spain and, briefly, the Netherlands.

Built by: BR Doncaster Works

Number built: 50

Number series: 58001-050

Service Career: 1983 onwards

Region: All except Scottish Region

Purpose: Heavy freight

Status in 2022: 0 Active/2 preserved

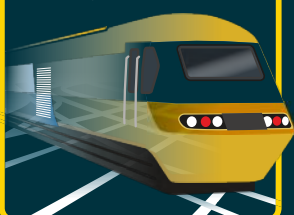
NEW FOR 2023! BR CLASS 58

No.	Description
5851	Railfreight Red Stripe
5853	Railfreight Coal Sector
5854	EWS Red/Gold
5855	Railfreight Red Stripe 58034 <i>Bassetlaw</i> WEATHERED
5857	Mainline Grey
5858	Railfreight Sector Grey Unnumbered/ Unbranded



Britain's Biggest
Model Railway

REALISM REDEFINED



BBMR 2023 SHOW

Don't miss 'Britain's Biggest Model Railway'
on display in Harrogate, North Yorkshire on
March 10-11 2023.

www.britainsbiggestmodelrailway.com



BR CLASS 60

Class Profile: BR's answer to the American-built Class 59s, these 3,200hp heavyweights were the last British diesel locomotives to be built before privatisation. Although many were taken out of service in the 2000s by EWS, around a third of the fleet remains active with DB Cargo, GB Railfreight, Colas and DCRail.

Built by: Brush/Procor
Number built: 100
Number series: 60001-100
Service Career: 1989 onwards
Region: All
Purpose: Heavy freight
Status in 2022: Active

BR CLASS 60

No.	Description
6000	Trainload Freight grey unbranded
6004	DB red/grey unbranded
6006	GB Railfreight blue/orange 60021 <i>Penyghent</i>
6010	DC Rail/Cappagh blue 60028



**DUE
IN
2023!**

Hand-decorated sample



BR CLASS 73/1 ELECTRO-DIESEL

Class Profile: Bi-mode traction is big news on the contemporary railway, but locomotives that can run on electric or diesel power are not a modern idea – Southern Region Class 73 electro-diesels have been doing it since the early-1960s. In tribute to these amazing survivors, this outstanding new model depicts the Class 73/1 production batch, many of which are still active today. These models will be available in all the most popular liveries carried across their long career, with both fully numbered/named and unnumbered versions available.

Built by: English Electric Vulcan Foundry
Number built: 42
Number series: E6006-48, 73101-142, 73201-213
Service Career: 1965 onwards
Region: Southern
Purpose: Mixed traffic
Status in 2022: 24 active/6 preserved

DUE 2023! EE/BR CLASS 73/1

No.	Description
7300	BR Blue (early) E6008 (small yellow panels/grey band)
7301	BR Blue E6020 (small yellow panels/grey roof)
7302	BR Rail Blue 73137 (full yellow end)
7303	BR Large Logo Blue
7304	InterCity Executive
7305	BR 'Dutch' grey/yellow
7306	Network SouthEast 73126 <i>Kent & East Sussex Railway</i>
7308	EWS Red/Gold
7309	Network Rail Yellow 73212
7310	GB Railfreight Blue/Orange 73107 <i>Tracy</i>

BR RAILCARS/DMUs

**DUE
IN
2023!**



**21
PIN**

**DCC
READY**

**WORKING
LIGHTS**

**INTERIOR
LIGHTS**

**SPRUNG
BUFFERS**

**SOUND
READY**

BR CLASS 121 RAILCAR

Class Profile: Closely related to the Class 117 three-car sets, these single railcars followed in the footsteps of the very successful GWR AEC railcars, replacing their predecessors on the short branches linking various Thames Valley towns and villages with the Great Western Main Line. After the closure of some of these lines, the class was more widely distributed, with some moving to the West Midlands and Bristol. Ideally suited to short lines with light passenger traffic, small numbers remained in passenger and departmental use into the 2000s. They became Britain's longest serving DMU type in the 2010s, with the final pair not withdrawn by Chiltern Railways clocking up an impressive 57 years by the time they were finally withdrawn by Chiltern Railways in 2017.

Built by: Pressed Steel

Number built: 16

Number series: W55020-035

Service Career: 1960-2017

Region: Western/London Midland

Purpose: Suburban/rural passenger

Status in 2022: 13 preserved

BR/Pressed Steel Class 121 Railcar

No.	Description
1210	BR green (speed whiskers) W55021
1211	BR green (small yellow panel) W55027
1212	BR blue (full yellow end) W55033
1213	BR blue/grey W55028
1214	Network SouthEast 55025
1215	GWR150 chocolate/cream W55020



BR CLASS 149 RAILCAR TRAILER

Built by: Pressed Steel

Number built: 10

Number series: W56280-289

Service Career: 1960-92

Region: Western

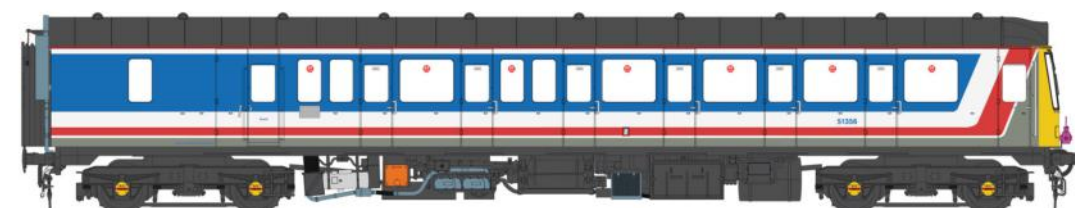
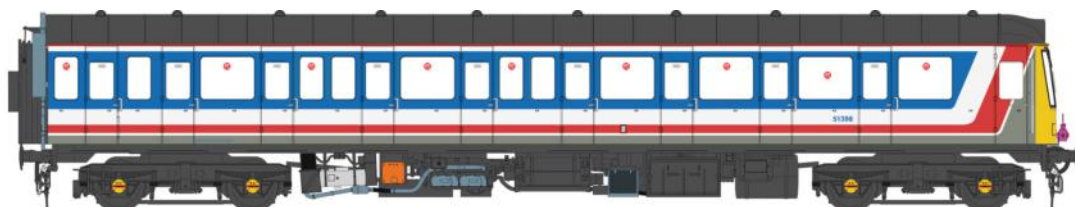
Purpose: Suburban passenger

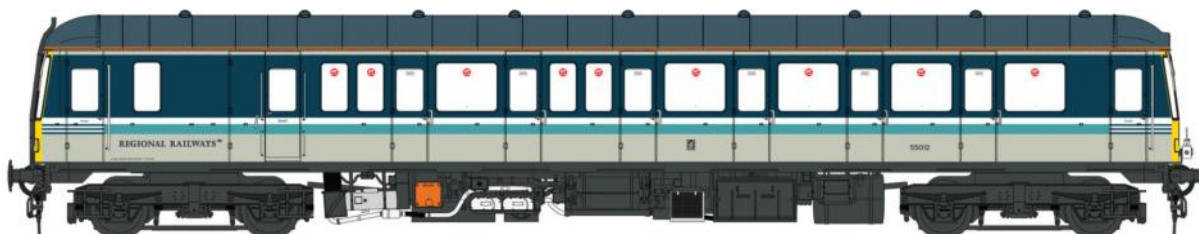
Status in 2022: 2 preserved

BR/Pressed Steel Class 149 Railcar Trailer

No.	Description
1240	BR green W56282
1241	BR green (yellow panel) W56285
1242	BR blue W56284
1243	BR blue/grey W54281
1244	Network SouthEast 54280

**DUE
IN
2023!**



DUE
IN
2023!21
PINDCC
READYWORKING
LIGHTSINTERIOR
LIGHTSSPRUNG
BUFFERSSOUND
READY

BR CLASS 122 RAILCAR

Class Profile: Following in the footsteps of the GWR railcars, this class of single railcars was built for the Western Region in the West Midlands, although they also saw use in Scotland from the late-1960s and in Devon and Cornwall. Ideally suited to short lines with light passenger traffic, they also saw use as departmental and parcels vehicles. However, they were retired from passenger use by Regional Railways in 1995. Nine single-ended trailers were also built to work with the '122s' (see Class 150), providing additional seats on busier services.

Built by: Gloucester RCW
Number built: 20
Number series: W55000-019
Service Career: 1958-95
Region: London Midland/Western/Scottish
Purpose: Suburban/rural passenger
Status in 2022: 13 preserved

BR CLASS 122 RAILCAR Version 1 (1960s)

No.	Description
1220	BR green W55000 (speed whiskers)
1221	BR green M55005 (small yellow panel)
1222	BR green W55017 (small yellow panel) WEATHERED

Version 1 (late-1960s/70s)

No.	Description
1225	BR green W55004 (small yellow panel)
1226	BR blue W55008 (small yellow panel)
1227	BR blue TDB975227 (full yellow end) WEATHERED

Version 2 (1970s-90s)

No.	Description
1230	BR blue SC55011 (full yellow ends)
1231	BR blue/grey M55009
1232	Regional Railways 55012



BR CLASS 150 RAILCAR TRAILER

Built by: Gloucester RCW
Number built: 9
Number series: W56291-299
Service Career: 1958-95
Region: London Midland/Western/Scottish
Purpose: Suburban/rural passenger
Status in 2022: 13 preserved

BR CLASS 150 RAILCAR TRAILER

No.	Description
1250	BR green W56299
1251	BR green (yellow panel) M56296
1252	BR blue M56295
1253	BR green W56292 small yellow panel) WEATHERED

21
PINDCC
READYWORKING
LIGHTSINTERIOR
LIGHTSSPRUNG
BUFFERSSOUND
READY

BR CLASS 117 DMU

Class Profile: Built by BMC subsidiary Pressed Steel in Glasgow to replace ex-GWR '61XX' steam locomotives and hauled stock on suburban services from London Paddington, these successful and long-lived DMUs were characterised by their high-density design. With a door to most seating bays, passengers could alight and board quickly at the frequent stops along Thames Valley routes. In later years they also found work around Birmingham, in North London and on ScotRail services between Edinburgh and Fife in the 1990s.

Built by: Pressed Steel
Number built: 43
Number series: DMBS: W51332-373, TCL: W59484-522, DMS: W51374-51415
Service Career: 1960-99
Region: Western/Scottish
Purpose: Suburban passenger
Status in 2022: 55 vehicles preserved

BR CLASS 117 DMU

No.	Description
1173	BR blue/grey 2-car set W51371+W51413
1174	Network SouthEast 2-car set L702 51398+51356
1175	BR green (speed whiskers) 3-car W51371+W59478+W51413
1176	BR green (small yellow panel) 3-car W51373+W59480+W51415
1177	BR blue (full yellow end) 3-car W51372+W59479+W51414
1178	BR blue/grey 3-car T306 51411+59521+51369
1179	Network SouthEast 3-car L421 51411+59521+51369

TRAIN BUILDER - O GAUGE

As the HELJAN range of O gauge rolling stock grows, the possibilities for assembling authentic train formations expand every year. The trains suggested below are based on classic period trains from the last 60 years using HELJAN models available now or due for release in 2023.

REGIONAL RAILWAYS NORTH WEST EARLY-1990s



TRANS-PENNINE LIVERPOOL-NEWCASTLE 1987



EDINBURGH-GLASGOW MID-1970s



KING'S CROSS-EDINBURGH EARLY-1970s



BR PARCELS MID-1970s



'THE HEBRIDEAN' - INVERNESS-KYLE OF LOCHALSH 1990



WESTERN REGION EXPRESS 1964



INVERNESS-KYLE OF LOCHALSH 1975



WATERLOO-SALISBURY 1990



MANCHESTER-CLEETHORPES 1984



3140

2400

2420

2400

2400

TEESSIDE OIL TRAIN MID-1960s



2406



1753

1001

1001

1001

1001

1001

1001



2405

2405

ScR BALLAST TRAIN EARLY-1990s



2400

2774



2682

4353

4353

4381

4353

4378



4944

2430

2430

2420



4993

4958

9402

4993

4993

PADDINGTON SUBURBAN EARLY-1960s



04

2404



1175

1175

1175

1210

BIRMINGHAM SUBURBAN LATE-1960s



2437

4931

4991



1226

1253

REGENT OIL TRAIN EARLY-1960s



2000

2000

1014

1015

1014

1015

1014

1015

1014

1015

TINTERN QUARRY BALLAST TRAIN 1966



2403



3586

4381

4381

4381

4381

4381

4381

4381

BR MARK 1 COACHES



Vehicle Profile: BR's standard passenger coach of the 1950s and 1960s – introduced in 1951 but many are still in service today with charter operators and preserved railways. Our most recent models feature two new designs of bogie, the widely used

Commonwealth and B4 types, vastly expanding the range of liveries we can offer. InterCity, Regional Railways and Network SouthEast Mk1s are perfect companions for new O gauge locomotives such as our refurbished Class 31s, 33s, 37/4s, 45s, 47s and 50s.

Service Career: 1951 onwards

Region: All

Purpose: Express/secondary passenger
Use with: BR(W) 43XX/61XX, BR Class 17/20/25/26/27/31/33/35/37/40/42/45/47/50/52/53/55/73

TOURIST SECOND OPEN (TSO)



No.	Description
4915	Network SouthEast (B4)
4916	InterCity Executive (B4)
4917	Regional Railways (B4)
4918	BR blue/grey (B4)

SECOND CORRIDOR (SK)



No.	Description
4903	Network SouthEast (Commonwealth)
4904	BR blue/grey (Commonwealth)

BRAKE SECOND CORRIDOR (BSK)



No.	Description
4926	InterCity Executive (Commonwealth)
4927	Regional Railways (Commonwealth)

FIRST CORRIDOR (FK)



No.	Description
4934	InterCity Executive (B4)
4935	Regional Railways (B4)
4937	Network SouthEast (Commonwealth)

RESTAURANT MINIATURE BUFFET (RMB)



No.	Description
4943	InterCity Executive (Commonwealth)



BR Mk 1 GENERAL UTILITY VAN

Service Career: 1956 onwards

Number built: 907

Region: All

Purpose: Mail/newspapers/parcels/Motorail

Use with: BR(W) 43XX/61XX, BR Class

17/20/25/26/31/33/35/37/40/42/45/47/50/52/53/55

**NEW
LIVERIES
FOR
2023!**



No.	Description
4986	Satlink Western red/yellow KDB977557 (BR1)*
4987	BR Blue W86370 WEATHERED (BR1)*
4988	BR Blue 'Newspapers' (BR1)*
4989	Rail express systems red/grey NOX (Commonwealth)*
4990	Royal Mail red/yellow (BR1)*
4991	BR lined maroon (BR1)
4992	BR Blue (BR1)*
4993	BR 'Express Parcels' blue (BR1)*
4994	BR(S) green (BR1)*
4995	BR 'Motorail' blue/grey (Commonwealth)
4996	InterCity Motorail (Commonwealth)
4997	Network SouthEast 93852 (BR1)

*New/rerun liveries for 2023

REPLACEMENT MK1 BOGIES

No.	Description
4998	Pack of 2x B4 Bogies
4999	Pack of 2x Commonwealth Bogies



BR Mk 1 BRAKE GANGWAYED (BG)

**NEW
LIVERIES
FOR
2023!**



No.	Description
4951	BR Maroon (BR1)*
4957	InterCity (B4)
4958	BR Blue/Grey (B4)
4959	Network Rail yellow Generator Van (B4)*
4960	Railway Technical Centre (RTC) red/blue 'Laboratory 23' (B4)*
4961	Breakdown Train Unit yellow/black*
4962	Rail express systems red/grey NEX (Commonwealth)*
4963	Provincial Trans-Pennine E92058 (B4)*
4964	ScotRail 92088 (B4)*
4966	BR Blue/Grey M80877 WEATHERED (BR1)*
4967	BR unlined Crimson E80638 (BR1)*

*New liveries for 2023



BR MK 1 COVERED CARRIAGE TRUCK (CCT)

Service Career: 1959 to mid-1980s

Region: All

Number built: 827

Purpose: Mail/parcels/newspapers/stores

Use with: Anything!

Features: Compensated axles, optional footsteps, pin-point bearings



No.	Proposed Liveries
9400	BR lined maroon
9401	BR maroon unlined
9402	BR Blue unbranded
9403	BR Blue 'Red Star'
9404	BR Breakdown Train yellow/black
9405	BR Departmental olive green
9406	BR lined maroon M94799 WEATHERED
9407	BR Blue 'Express Parcels' W94476 WEATHERED
9408	'Tartan Arrow' red/white M94170



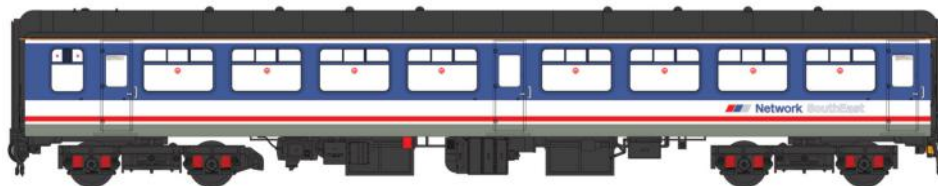
Vehicle Profile: We are expanding our range of British Rail rolling stock with a family of early Mk2 coaches. Four variants will be offered, First

Corridor (FK), Brake Second Open (BSO), Brake First Corridor (BFK) and Tourist Second Open (TSO). The vehicles can be configured as

Mk2 or Mk2a variants using the pack of customer-fit parts supplied with every model. Due to a factory closure, the Mk2s will now be released in 2023.

**DUE
IN
2023!**

MK2/MK2A TOURIST SECOND OPEN (TSO)



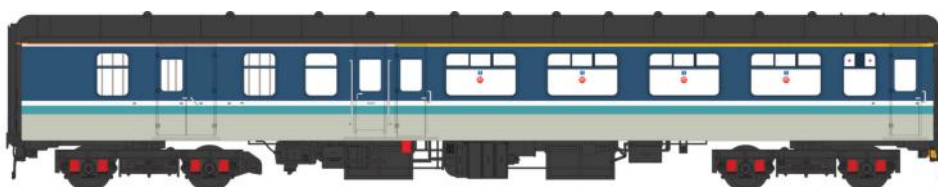
No.	Description	No.	Description
2400	BR blue/grey unbranded	2404	Hebridean green/cream
2401	ScotRail	2405	Provincial Trans-Pennine
2402	Network SouthEast light blue	2406	Regional Railways
2403	Network SouthEast dark blue	2407	West Coast Maroon

MK2/MK2A BRAKE SECOND OPEN (BSO)



No.	Description	No.	Description
2410	BR blue/grey unbranded	2414	Provincial Trans-Pennine
2411	Network SouthEast light blue	2415	BR blue/grey with Micro-Buffer BSO(T)
2412	Network SouthEast dark blue	2416	DRS blue Escort Coach
2413	Hebridean green/cream	2425	Network Rail yellow DB977337

MK2/MK2A BRAKE FIRST CORRIDOR (BFK)



No.	Description	No.	Description
2420	BR blue/grey unbranded	2423	Regional Railways
2421	Network SouthEast light blue	2424	InterCity Executive
2422	Network SouthEast dark blue		

MK2/MK2A FIRST CORRIDOR (FK)



No.	Description	No.	Description
2430	BR blue/grey unbranded	2434	ScotRail 13424
2431	Network SouthEast light blue	2435	RTC red/blue Test Car 6
2432	Network SouthEast dark blue	2436	BR(S) green
2433	Provincial Trans-Pennine		

NEW
FOR
2024!

NEW! SOUTHERN RAILWAY PMV/CCT UTILITY VAN

Vehicle Profile: Many hundreds of these general purpose two-axle vans were built by the Southern Railway and BR over more than three decades. Two main versions were the Covered Carriage Truck (CCT) with folding end doors and Parcels & Miscellaneous Van (PMV) with fixed ends, but other variations in construction included even planks, uneven planks and plywood panels. Luggage, newspapers, mail and parcels traffic formed the bulk of their work but they also carried bicycles, pigeons and lightweight goods. Many passed into departmental use from the 1960s onwards, proving useful as storage, equipment and generator vans.

Service Career: 1920s to 1980s

Region: All

Purpose: Mail/parcels/newspapers/stores

Use with: Anything!

Features: Compensated axles, optional footsteps, pin-point bearings

NEW FOR 2023! SR CCT/PMV UTILITY VAN

No.	Description
9150	SR Green PMV No. 1171
9151	BR Crimson PMV
9152	BR(S) Green PMV S16265
9153	BR Blue PMV S1574
9154	BR Blue PMV S1865 WEATHERED
9155	BR Gulf Red PMV ADS4
9170	SR Green CCT S2372
9171	BR Crimson CCT S1765S WEATHERED
9172	BR(S) Green CCT
9173	BR Blue NOV S2017
9174	BR Departmental Olive Green CCT ADB975276
9175	BR Blue CCT S1733

DUE
IN
2023!

LMS 50FT INSPECTION SALOON

Class Profile: Used for engineers' inspections, VIPs, meetings and district managers' tours of network, these classic LMS vehicles had seated saloons at each end with large windows to give a good all round view of the line. Between the saloons was a toilet and a small kitchen for preparing meals. The perfect one-coach train for O gauge layouts of all sizes, from depots to large exhibition layouts!

Service Career: 1940s onwards

Region: All

Number built: 13

Purpose: Permanent way inspection/VIP transport

Use with: Anything!

LMS 50FT INSPECTION SALOON

No.	Description
9100	LMS lined crimson (black ends)
9101	BR crimson/cream (black ends)
9102	BR lined maroon (black ends)
9103	BR Blue (full yellow ends)
9104	BR blue/grey (full yellow ends)
9105	InterCity 'Swift' (yellow ends)
9106	ScotRail DM45020 (B4 bogies)
9107	LMS Crimson DM45026 (yellow ends)
9108	Loadhaul black/orange
9109	EWS red/gold
9110	Regional Railways
9111	BR crimson/cream (yellow ends)

'O' FREIGHT WAGONS



35 TON 'B' TANK

Service Career: 1950s-1980s

Region: All

Purpose: Fuel oil/diesel transport

BR TOPS code: Various

Use with: BR(W) 43XX/61XX, BR Class 03/05/17/20/25/26/31/33/35/37/40/42/45/47/50/52/53

**NEW
LIVERIES FOR
2023!**



NEW LIVERIES FOR 2023! 35 TON 'B' TANK

No.	Description
1010	ESSO Black (early) 3305
1011	ESSO Black (early) 3328
1012	ESSO Black (alt livery) 3373
1013	ESSO Black (alt livery) 3650
1014	Regent Black 323
1015	Regent Black 409
1016	BR 'Waste Oil' Black ADB999041
1017	BR Departmental Yellow LDB998933
1018	BR Departmental Olive Green ADB999090
1019	ESSO 'Lube Traffic Only' Black 44216
1020	ESSO Black (unbranded) 43506
1021	ESSO Black (unbranded) 43784
1022	ICI Molasses Red/Grey 48559
1023	ICI Molasses Red/Grey 48623
1024	ICI Chemicals Grey/Orange 384



BR 'CATFISH' HOPPER

Number Built: 716

Service Career: 1954-2006

Region: LMR/NER/ER/ScR

Purpose: Ballast hopper

BR TOPS code: ZEV

Use with: Class Class 03/17/20/25/26/31/35/37/40/47/5



BR 'CATFISH' BALLAST HOPPER

No.	Description
4354	BR Black DB983754
4355	BR Olive DB992624 WEATHERED
4356	BR Olive (late) DB983473
4357	BR Civil Engineers Grey/Yellow ZEV DB992559
4358	BR Civil Engineers Grey/Yellow ZEV DB992579
4359	BR Civil Engineers Yellow ZEV DB983503
4360	BR Civil Engineers Grey/Yellow ZCV 'Puffin' DB983872
4361	BR Olive DB983860 WEATHERED
4362	BR Gulf Red DB992661 WEATHERED



BR 'DOGFISH' HOPPER

Number Built: 1,249

Service Career: 1955-2006

Region: All

Purpose: Ballast hopper

BR TOPS code: ZFV

Use with: BR(W) 43XX/61XX, BR Class 03/17/20/25/26/31/33/35/37/40/45/50/52

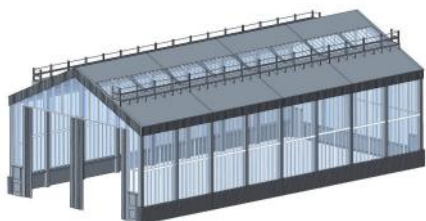


BR 'DOGFISH' BALLAST HOPPER

No.	Description
4379	BR Black DB993952
4380	BR Olive (late) DB983195
4381	BR Olive (early) DB993413 WEATHERED
4382	BR Black DB992748 (NE markings)
4383	BR Gulf Red ZFV DB983217
4384	BR Civil Engineers Grey/Yellow ZFV DB993016
4385	BR Civil Engineers Grey/Yellow ZFV DB983210
4385	BR Civil Engineers Grey/Yellow ZFV DB993331 WEATHERED
4387	BR Civil Engineers Grey/Yellow ZFV DB983192 (Mainline branding)
4388	Loadhaul black/orange ZFV DB993111

KITS & ACCESSORIES FOR O AND OO GAUGE

Complement your HELJAN models with high-quality building kits, available from your local model railway shop now.



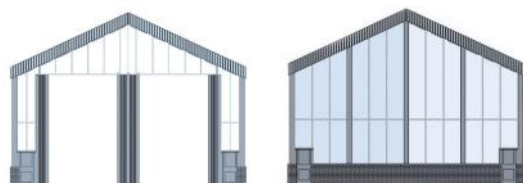
O GAUGE DIESEL DEPOT KIT

No.	Description
9500	Modern Diesel Depot
9501	Modern Diesel Depot Kit
9502	Modern Diesel Depot extension end sections



O GAUGE DIESEL DEPOT KIT EXTENSION - SIDES

No.	Description
9501	Diesel Depot Extension



O GAUGE DIESEL DEPOT KIT - ENDS

No.	Description
9502	Modern Diesel Depot extension end sections



OO TACKLEY HALT MODERN STATION KIT

No.	Description
2501	Tackley Halt kit

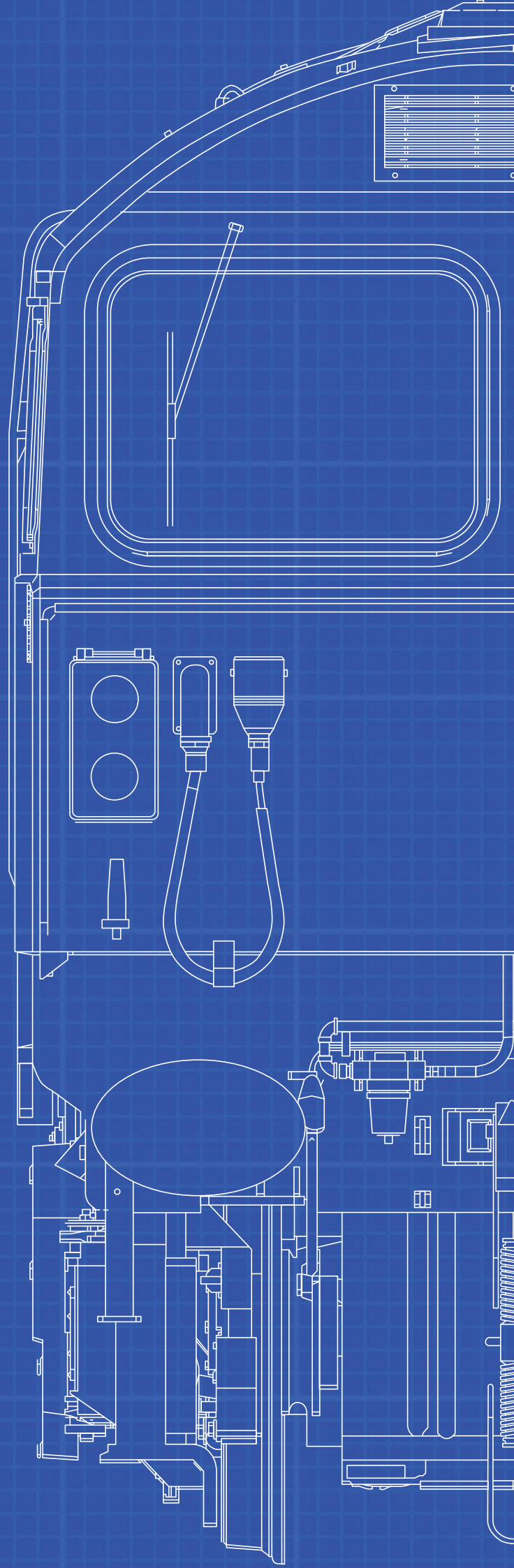


OO MOTORISED 27.4 METRE (90FT) TURNTABLE

Product information: This superb OO gauge, electronically operated, DCC compatible turntable features a detailed deck, weathered one-piece pit and motorised drive gear. Locomotives up to 320mm (12in) long can be accommodated and the programmable indexing system allows up to 58 track positions. Can be used with analogue control or DCC systems without requiring a separate decoder.

The turntable requires a baseboard hole of 350mm with 57mm clearance below the pit.





Heljan A/S
Rebslagervej 6,
DK-5471, Sønderso, Denmark
e: heljan@heljan.dk

 Search for Heljan A/S

www.heljan.co.uk

